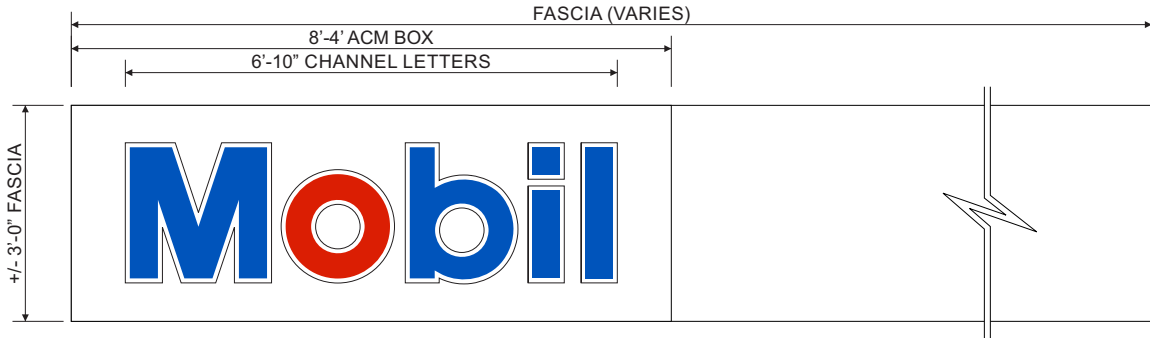


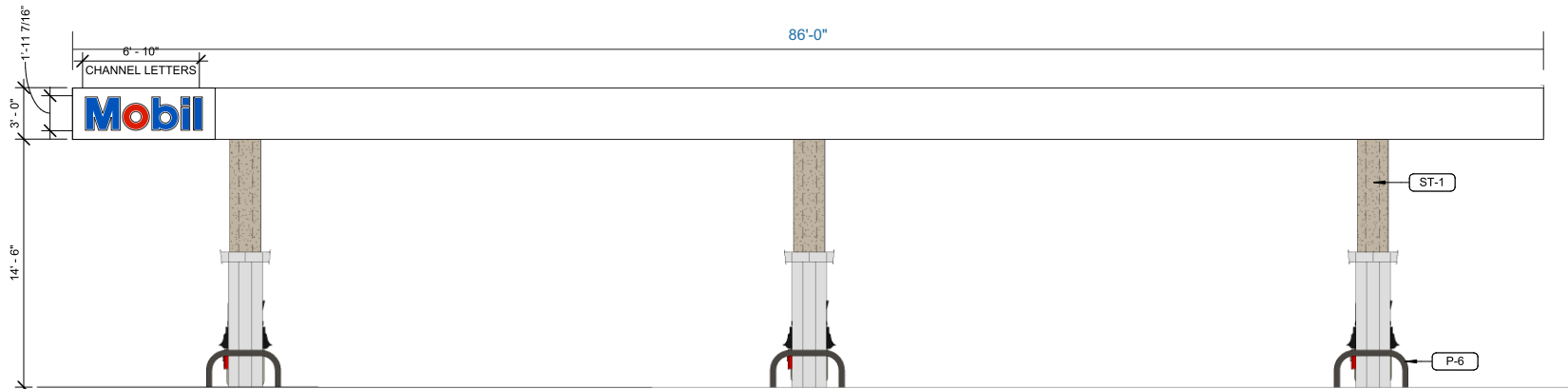
THREE (3) SETS OF INTERNALLY ILLUMINATED MOBIL PUSH-THRU INJECTION MOLDED LETTERS & 6" ACM BOXES. CABINETS TO BE INTERNALLY ILLUMINATED W/ WHITE LEDS.

**NOTE:** CANOPY SIGNS TO BE PROVIDED BY APPROVED SIGN MANUFACTURER OF EXXON MOBIL.

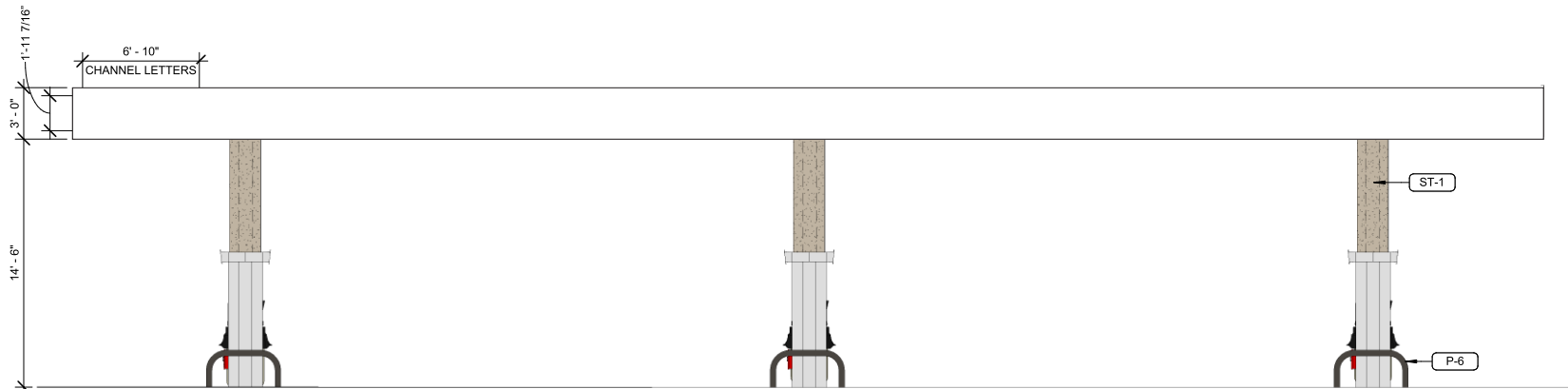
Front Elevation & Side Mounting Detail - **Standard 23 7/16" Mobil Canopy Style Channel Letters w/ ACM Box - Sign G**  
3/4" = 1'-0" Display Square Footage: **13.4 (Each Set)**



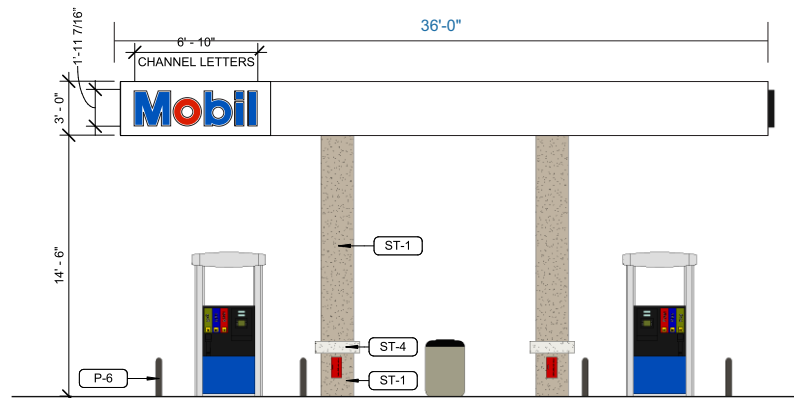
Front Elevation - **36" Canopy Height - Typical 3D Sign And Graphics Layout**  
3/8" = 1'-0"



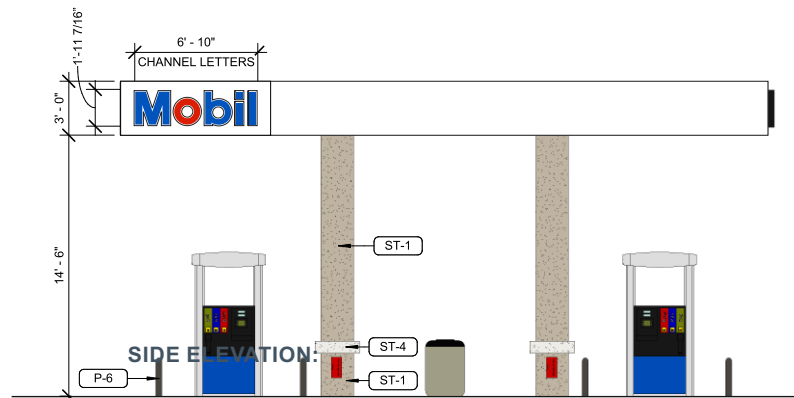
**FRONT ELEVATION:**



**REAR ELEVATION:**



**SIDE ELEVATION:**



**SIDE ELEVATION:**

Front and Side Elevation (6MPD Stacked Canopy Configuration) - **Sign I**  
**NTS**

[www.harbingersign.com](http://www.harbingersign.com)

7-Eleven  
#34785  
4798 N. Congress Avenue  
Boyton Beach, Florida 33426  
CONTACT: Roger Posey

SALES ASSOC.: Rick Guarino  
PROJECT MGR: Nicole Streeer

DESIGNER: Brandon Winebarger

**SVE7653-R5**

F:\Customers\7 Eleven\Art\SVE7653-R5 #34785.cdr

Date	Rev.	Description
01.30.19	00	Original
03.11.19	R1	Update site plan & Monument Placement
03.15.19	R2	Update SQ FT Notes
03.22.19	R3	Change to Mobile site
03.25.19	R4	Update Elevation Drawings
04.24.19	R5	Update art per notes by customer & elevations

**ZONING: C3**  
**SQUARE FOOTAGE FORMULA**

<b>ALLOWED TOTAL</b>	<b>127.0 SQ. FT./SITE</b>
<b>PROPOSED TOTAL</b>	<b>115.5 SQ. FT./SITE</b>

Site Notes:

Customer Notes:

Customer Approval: \_\_\_\_\_ DATE: \_\_\_\_\_

Page: 8



THE STRUCTURAL DESIGN CONFORMS TO THE FOLLOWING CODES AND SPECIFICATIONS:  
THE FLORIDA BUILDING CODE SIXTH EDITION (2017), THE AMERICAN INSTITUTE OF STEEL  
CONSTRUCTION(MANUAL OF STEEL CONSTRUCTION, 9TH EDITION), THE AMERICAN WELDING  
SOCIETY(AWS D1.1-15), THE AMERICAN CONCRETE INSTITUTE BUILDING CODE REQUIREMENTS  
FOR STRUCTURAL CONCRETE(ACI 308-14), THE SPECIFICATION FOR ALUMINUM STRUCTURES  
BY THE ALUMINUM ASSOCIATION(CURRENT EDITION).