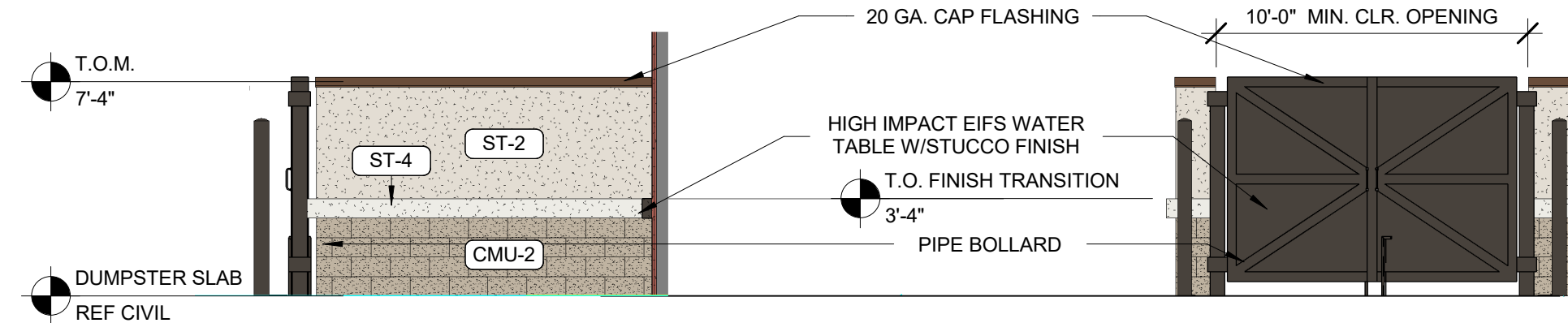
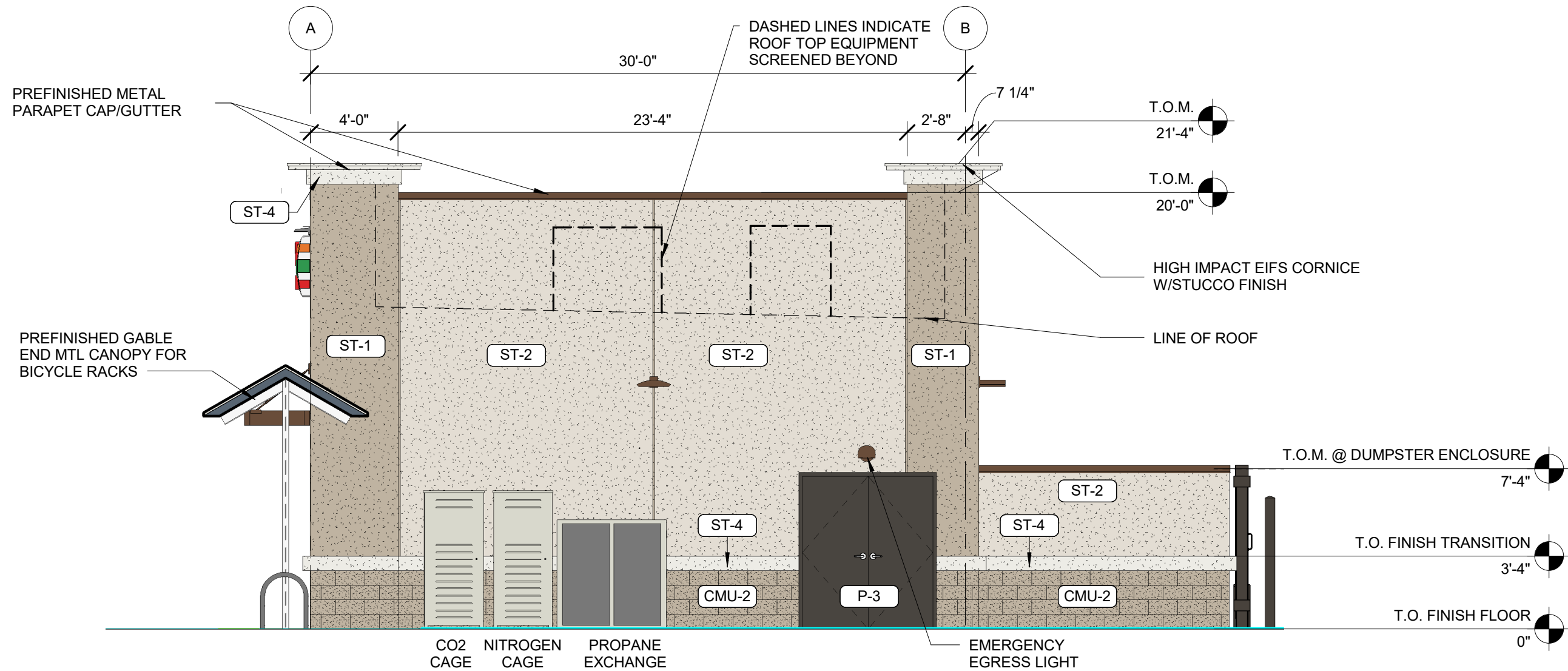
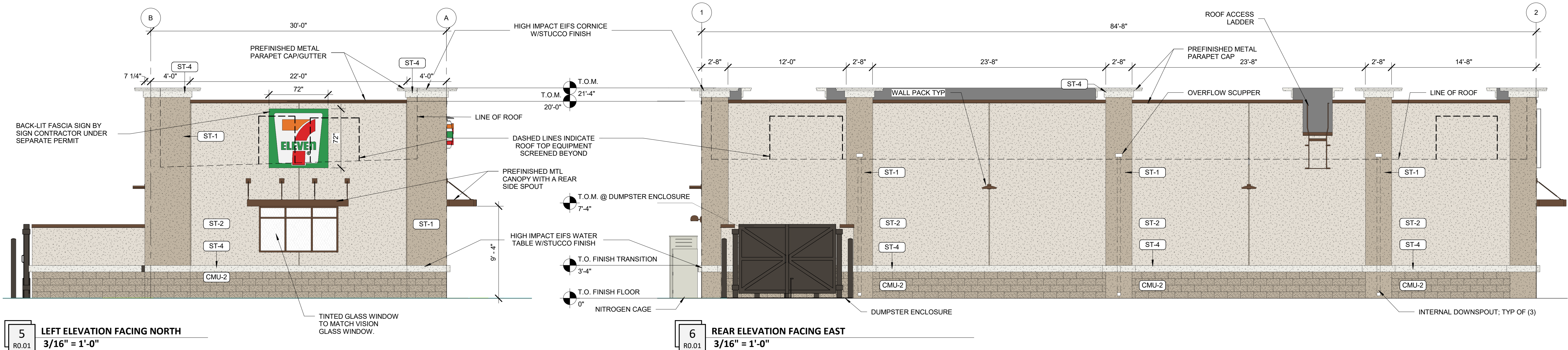


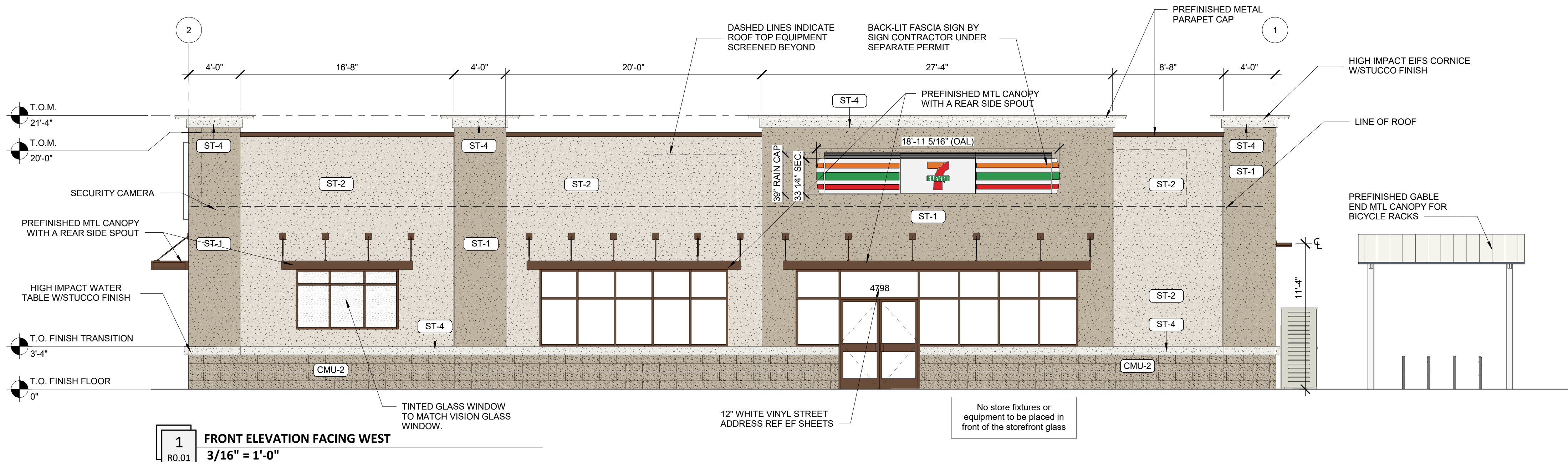
4/23/2019 5:21:00 PM

BIM 360://34785 Boynton Beach FL @ 4798 N. Congress Ave (18038)/18038 BOYNTON BEACH FL_A_R16.rvt



The size of the dumpster enclosure is constructed in accordance with Engineering Standard Drawing G-4 of the Engineering Design Handbook and Construction Standards

4 GATE ELEVATION DUMPSTER ENCL. 3/16" = 1'-0"



EXT. MATERIALS SCHEDULE			
(NOT ALL MATERIALS IN SCHEDULE ARE USED)			
NO.	MATERIAL	MANUFACTURER	COLOR
C-1	PREFINISHED ALUMINUM CANOPY	MAPES LUMISHADE CANOPY	BRAINSTORM BRONZE ENAMEL
CMU-2	SPLIT-FACE BLOCK	TBD	PAINTED BALANCED BEIGE - SW 7037
MR-1	MEMBRANE ROOFING	DUROLAST	WHITE
P-1	GUTTER AND FASCIA	SHERWIN WILLIAMS	DARK BRONZE
P-3	EXTERIOR HM DOORS, FRAMES, TRASH ENCLOSURE GATE, GRAVEL GUARDS, AND LIGHT POLES	SHERWIN WILLIAMS	SEAL SKIN SW 7675
P-6	EXTERIOR BOLLARDS	SHERWIN WILLIAMS	SEAL SKIN SW 7675
S-1	ALUMINUM STOREFRONT GLAZING	KAWNEER	DARK BRONZE
ST-1	STUCCO	SHERWIN WILLIAMS	PAINTED BALANCED BEIGE - SW 7037
ST-2	STUCCO	SHERWIN WILLIAMS	PAINTED AESTHETIC WHITE SW 7035
ST-4	STUCCO	SHERWIN WILLIAMS	PAINTED PURE WHITE - SW 7005

bates

502 SW A STREET, SUITE 2
BENTONVILLE, AR 72712
WWW.BATESARCHITECTS.COM
TEL: 479.633.8165

Copyright 2019 Bates & Associates, Architects

Drawings and Specifications as instruments of service are and shall remain the property of the Architect. They are not to be used on other projects or extensions to this project except by agreement in writing and with appropriate compensation to the Architect.

Contractor is responsible for confirming and correlating dimensions at job site. The Architect will not be responsible for construction means, methods, techniques, sequences or procedures, or for safety precautions and programs in connection with the project.

STORE #:

34785

CONSTRUCTION MANAGER

CREIGHTON CONSTRUCTION & MANAGEMENT, LLC
900 SW PINE ISLAND ROAD, SUITE 202
CAPE CORAL, FL 33991

TENANT

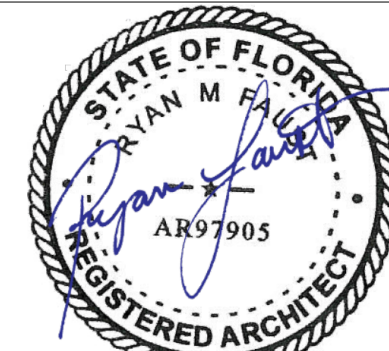
7-ELEVEN INC.
3200 HACKBERRY ROAD IRVING, TX 75063

STRUCTURAL CONSULTANT

SELECT STRUCTURAL
12573 NEW BRITANNY BLVD, FORT MYERS, FL 33907
CONTACT: SHAWN ANDERSON

PROTO:04/30/18

7-ELEVEN STORE
4798 CONGRESS AVE
BOYNTON BEACH, FL 33426
CREIGHTON CONSTRUCTION & MANAGEMENT, LLC
900 SW PINE ISLAND ROAD, SUITE 202
CAPE CORAL, FL 33991



Architect Name - RYAN M FAUST
Architect Number - AR97905

THE SEAL AND SIGNATURE APPLY ONLY TO THE DOCUMENT TO WHICH THEY ARE AFFIXED AND WE EXPRESSLY DISCLAIM ANY RESPONSIBILITY FOR ALL OTHER PLANS, SPECIFICATIONS, ESTIMATES, REPORTS OR OTHER DOCUMENTS OR INSTRUMENTS RELATING TO OR INTENDED TO BE USED FOR ANY PART OR PARTS OF THE PROJECT.

REVISIONS
NO. DATE DESCRIPTION

PROJECT NUMBER: 18038

RELEASE DATE: 04/23/19

REVIEW BOARD ELEVATIONS

R0.01