

XREF: [C:\MC\_2436\_CER001ST\_01\DWG\01ST\_154233.dwg] Images: [ ]  
Last saved by: AUS100 Time: 1/14/2015 15:42:33 PM  
Path: C:\Program Files\Autodesk\AutoCAD 2015\Projects\Information\01 Data\00 CAD\Graphics\Figures\2-1 FIGURE.dwg

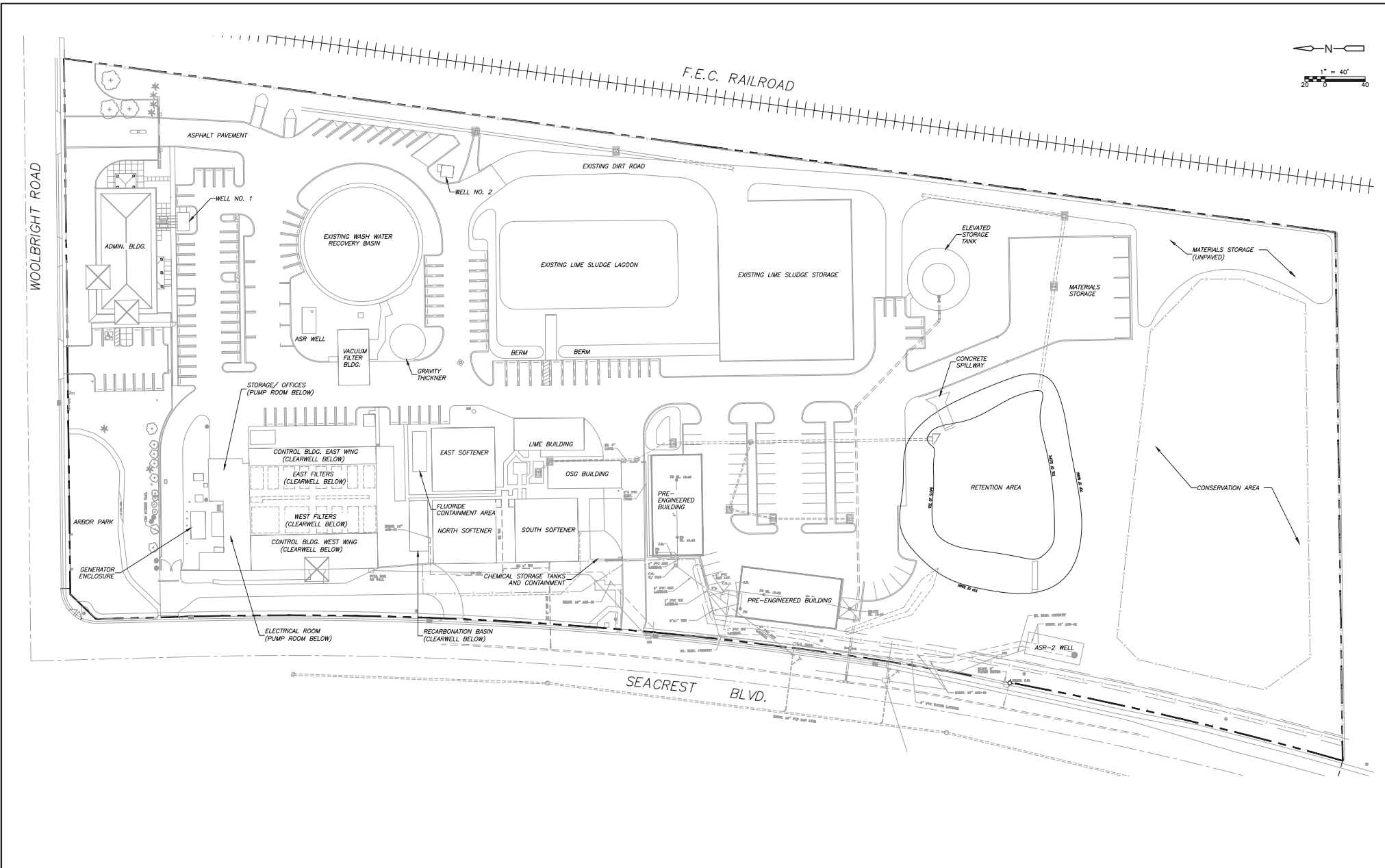


Figure 2-1  
City of Boynton Beach, Florida  
Anionic Exchange Resin Facility and East Water Treatment Plant Improvements  
EXISTING SITE PLAN  
JAN 2015

XREFs: [CDMS\_2436\_CEP001ST] Inception: [ ]  
 P:\Work\Projects\PM\MI\Documents\0000\104260\02 Project Information\03 Data\00 CAD Graphics\Figures\2-2 FIGURE  
 last saved by: AUSTED Time: 1/14/2015 2:17:18 PM

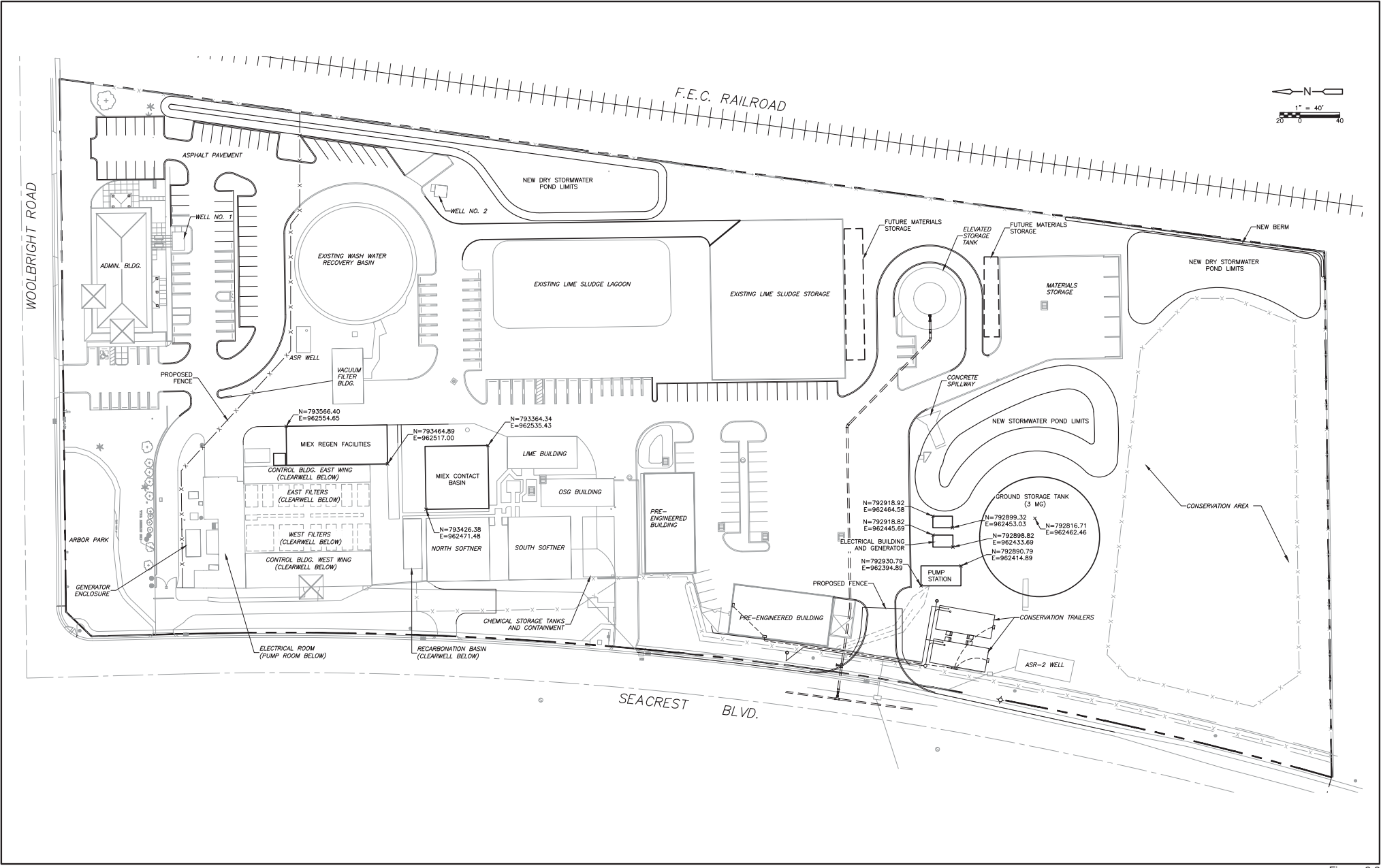
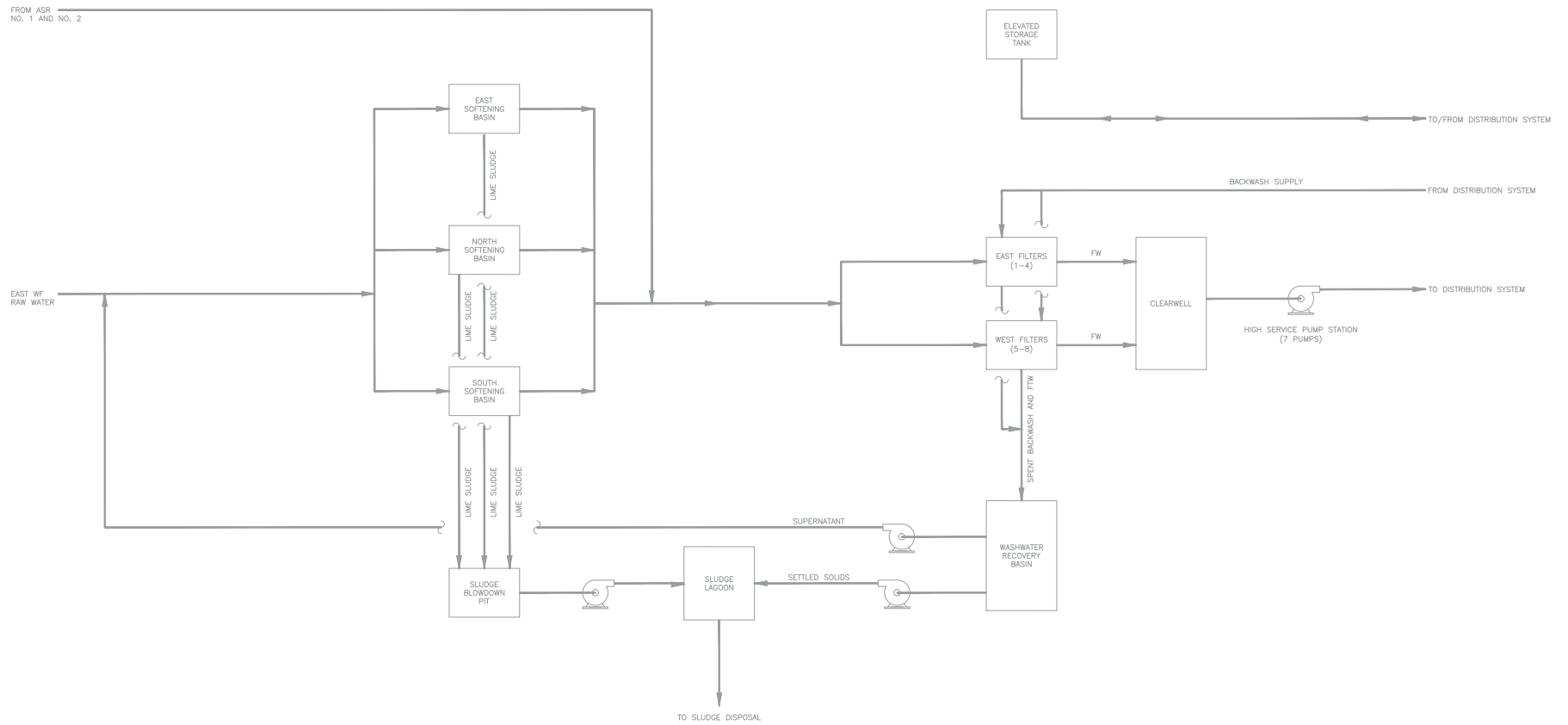


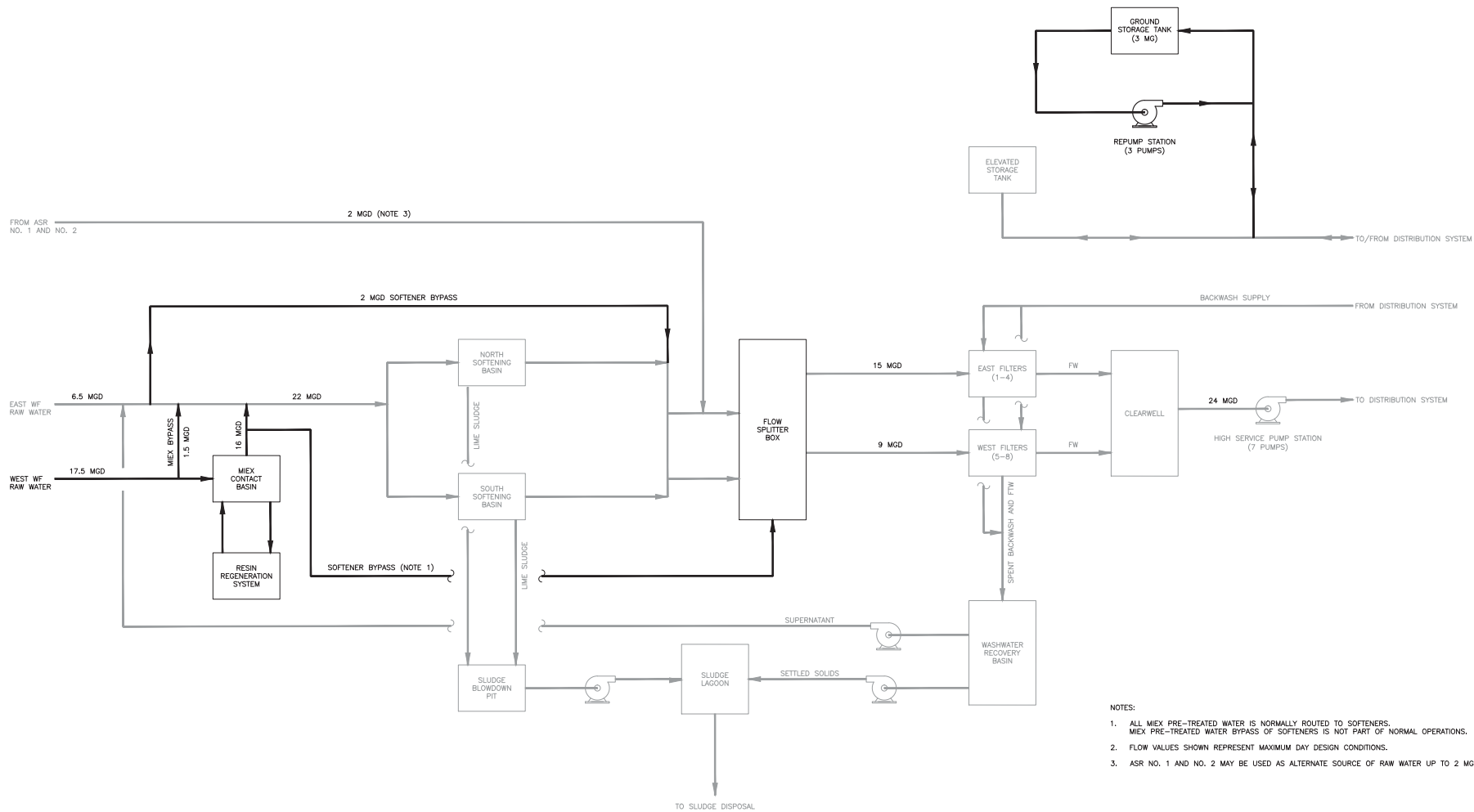
Figure 2-2  
 City Of Boynton Beach, Florida  
 Anionic Exchange Resin Facility and East Water Treatment Plant Improvements  
 PROPOSED SITE HORIZONTAL CONTROL PLAN  
 JAN 2015



XREFs: [CDMS\_2436\_CEP001ST\_CEP001ST] incipies [ ]  
 P:\Projects\PM\15000\104280\04 Design Services\15\_3076\02 CW\10 CAD\00001P\Using  
 Last saved by: AUSTED Time: 1/14/2015 2:17:18 PM



Figure 4-1  
 City of Boynton Beach, Florida  
 Anionic Exchange Resin Facility and East Water Treatment Plant Improvements  
 EAST WTP EXISTING PROCESS BLOCK FLOW DIAGRAM  
 JAN 2015



- NOTES:
1. ALL MEX PRE-TREATED WATER IS NORMALLY ROUTED TO SOFTENERS. MEX PRE-TREATED WATER BYPASS OF SOFTENERS IS NOT PART OF NORMAL OPERATIONS.
  2. FLOW VALUES SHOWN REPRESENT MAXIMUM DAY DESIGN CONDITIONS.
  3. ASR NO. 1 AND NO. 2 MAY BE USED AS ALTERNATE SOURCE OF RAW WATER UP TO 2 MGD.



Figure 4-2  
 City of Boynton Beach, Florida  
 Anionic Exchange Resin Facility and East Water Treatment Plant Improvements  
 EAST WTP PROPOSED PROCESS BLOCK FLOW DIAGRAM  
 JAN 2015

pm:\shop\pwp1\FW\_XM1\Documents\5000\104280\02 Project Information\03 Data\50 CADD Graphics\Figures\4-3 Figure.dwg  
© 2015 CDM SMITH. ALL RIGHTS RESERVED.  
NONE OF THE DOCUMENTS, THESE DOCUMENTS AND DESIGNS PROVIDED BY PROFESSIONAL SERVICE, INCORPORATED HEREIN, ARE THE PROPERTY OF CDM SMITH AND ARE NOT TO BE USED, IN WHOLE OR PART, FOR ANY OTHER PROJECT WITHOUT THE WRITTEN AUTHORIZATION OF CDM SMITH.

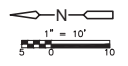
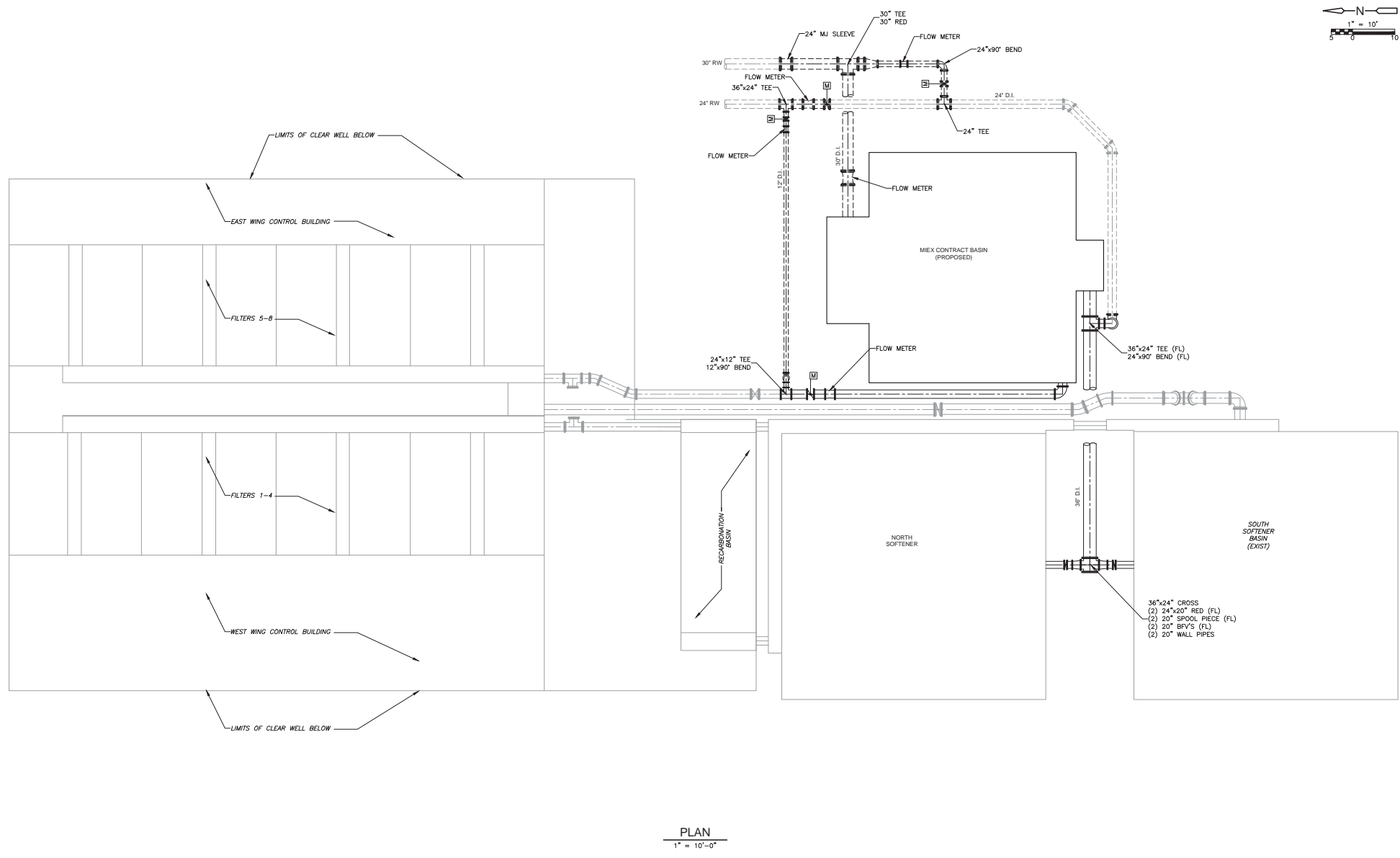
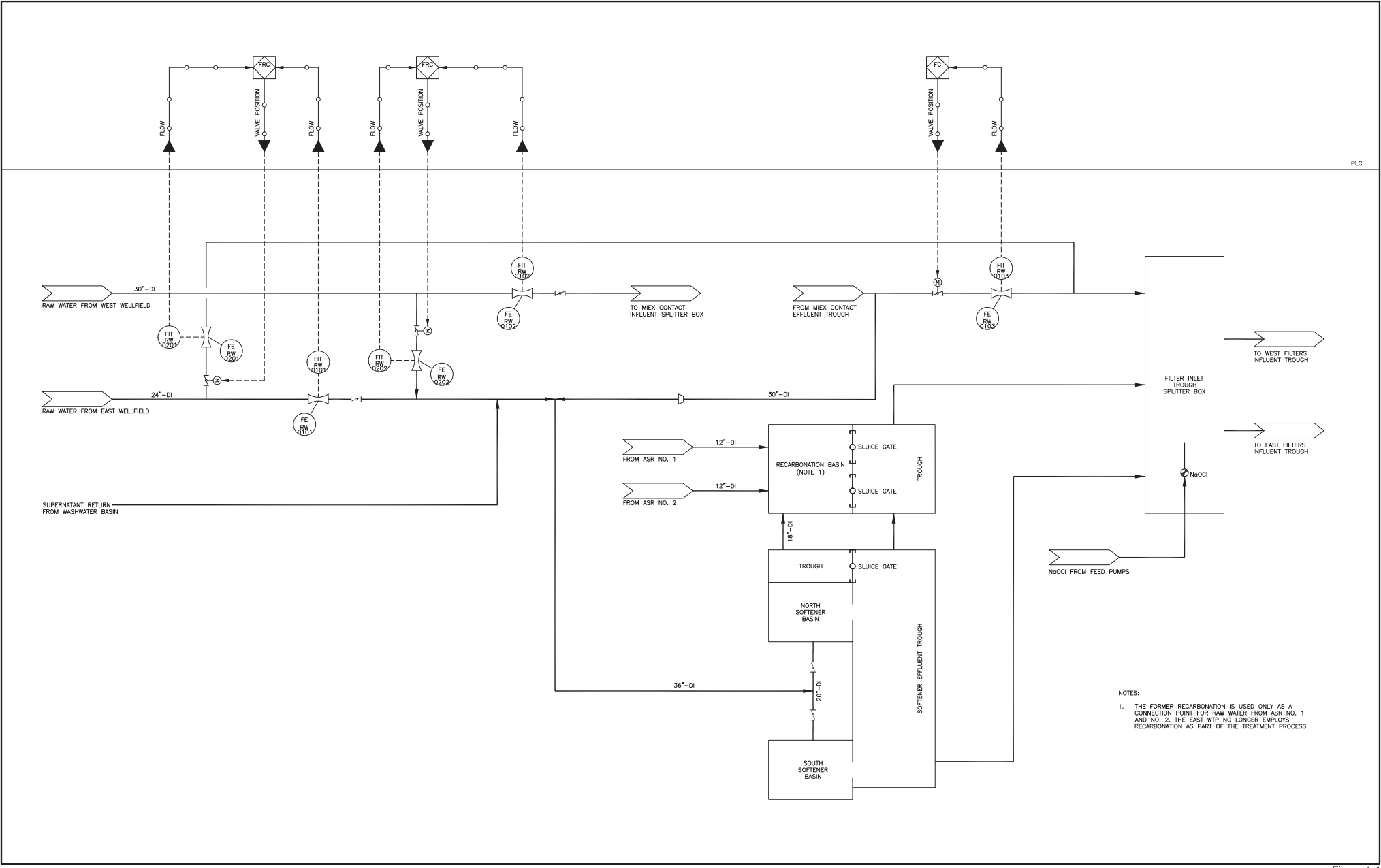


Figure 4-3  
City Of Boynton Beach, Florida  
Anionic Exchange Resin Facility and East Water Treatment Plant Improvements  
PROPOSED RAW PIPING MODIFICATIONS - EAST  
JAN 2015

XREFs: [CDMS\_2436\_CEP001ST\_CEP001ST] Incepas: [ ]  
 P:\Projects\PLM\1000\104280\04\_Design\_Services\10\_30%\_02\_Civil\10\_CDD\0001STPL.dwg  
 Last saved by: AUSTED Time: 1/14/2015 2:17:18 PM

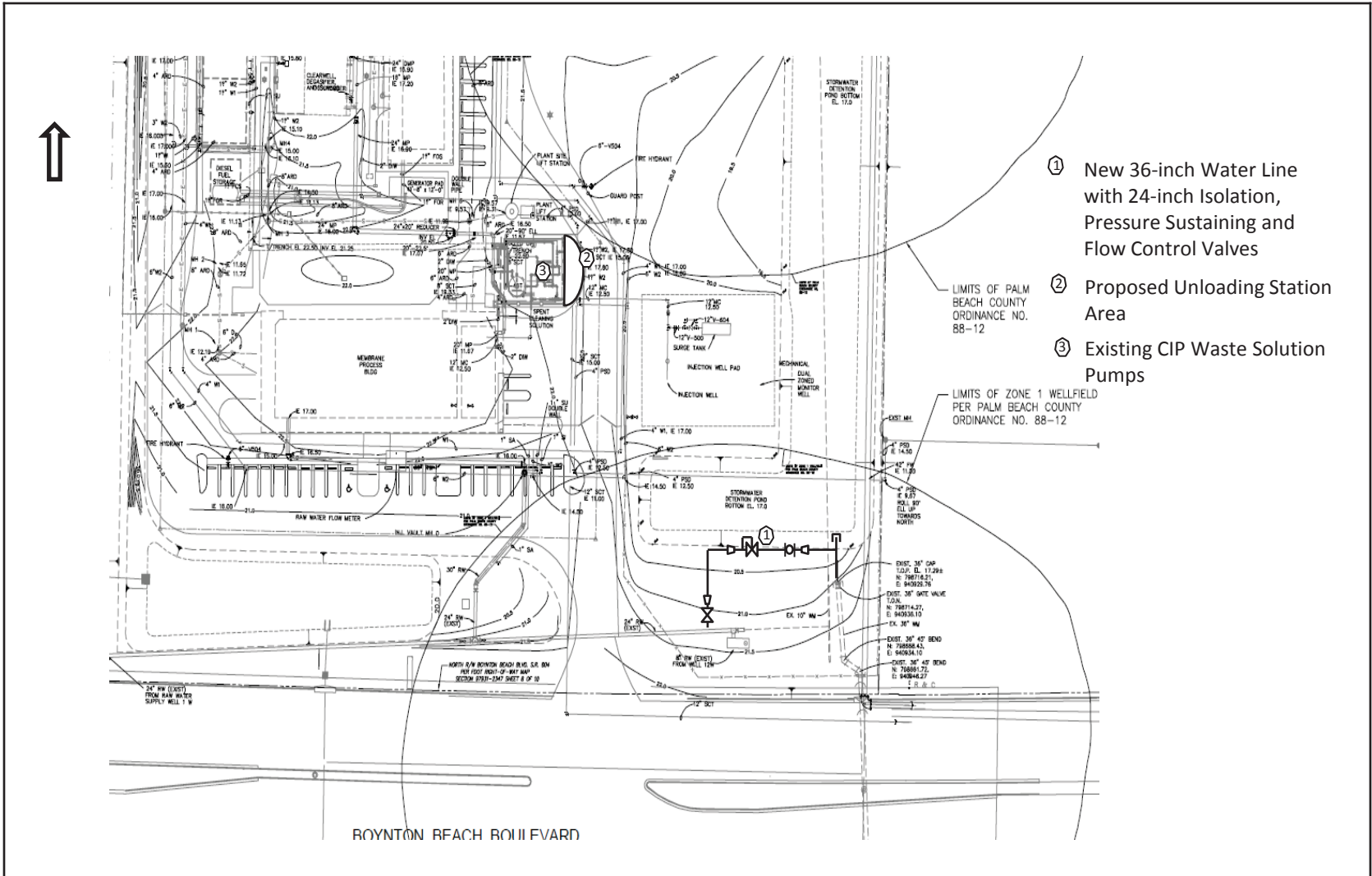


NOTES:  
 1. THE FORMER RECARBONATION IS USED ONLY AS A CONNECTION POINT FOR RAW WATER FROM ASR NO. 1 AND NO. 2. THE EAST WTP NO LONGER EMPLOYS RECARBONATION AS PART OF THE TREATMENT PROCESS.



Figure 4-4  
 City of Boynton Beach, Florida  
 Anionic Exchange Resin Facility and East Water Treatment Plant Improvements  
 EAST WTP PROPOSED RAW WATER AND SOFTENERS PROCESS FLOW SCHEMATIC  
 JAN 2015

p:\w\FL\Boynton Beach\9666B40\Disciplines\Process\BB\_West\_WTP\_PDR\_Figures



- ① New 36-inch Water Line with 24-inch Isolation, Pressure Sustaining and Flow Control Valves
- ② Proposed Unloading Station Area
- ③ Existing CIP Waste Solution Pumps



Figure 4-5  
 City of Boynton Beach, Florida  
 Anionic Exchange Resin Facility and West Water Treatment Plant Improvements  
 CONCEPTUAL SITE PLAN MODIFICATIONS – WEST WTP  
 JAN 2015

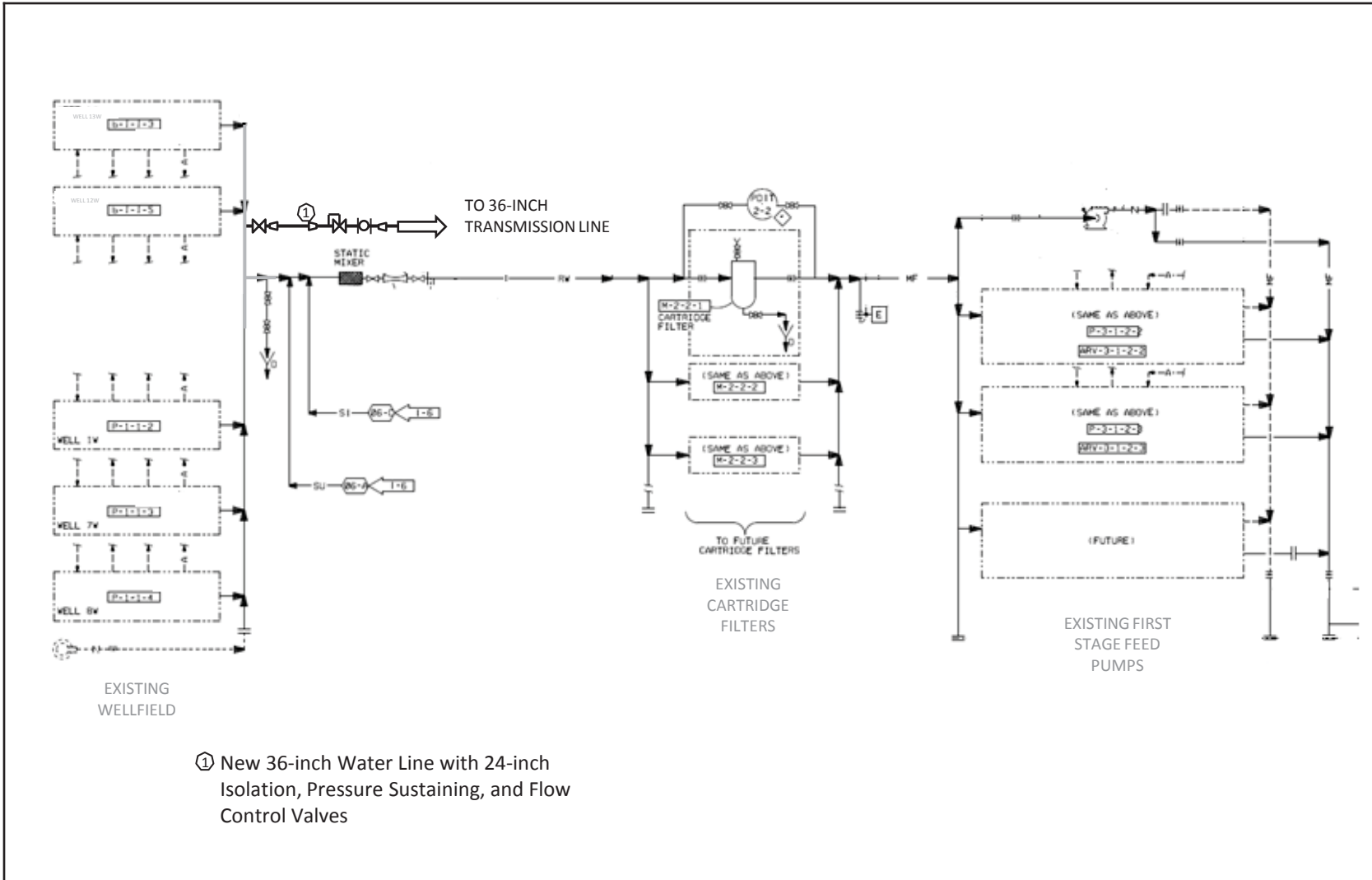


Figure 4-6  
City of Boynton Beach, Florida  
Anionic Exchange Resin Facility and West Water Treatment Plant Improvements  
PROPOSED RAW WATER SUPPLY MODIFICATIONS SCHEMATIC – WEST WTP  
JAN 2015



pww:\FL\Boynton Beach\9666B40\Disciplines\Process\BB\_West\_WTP\_PDR\_Figures

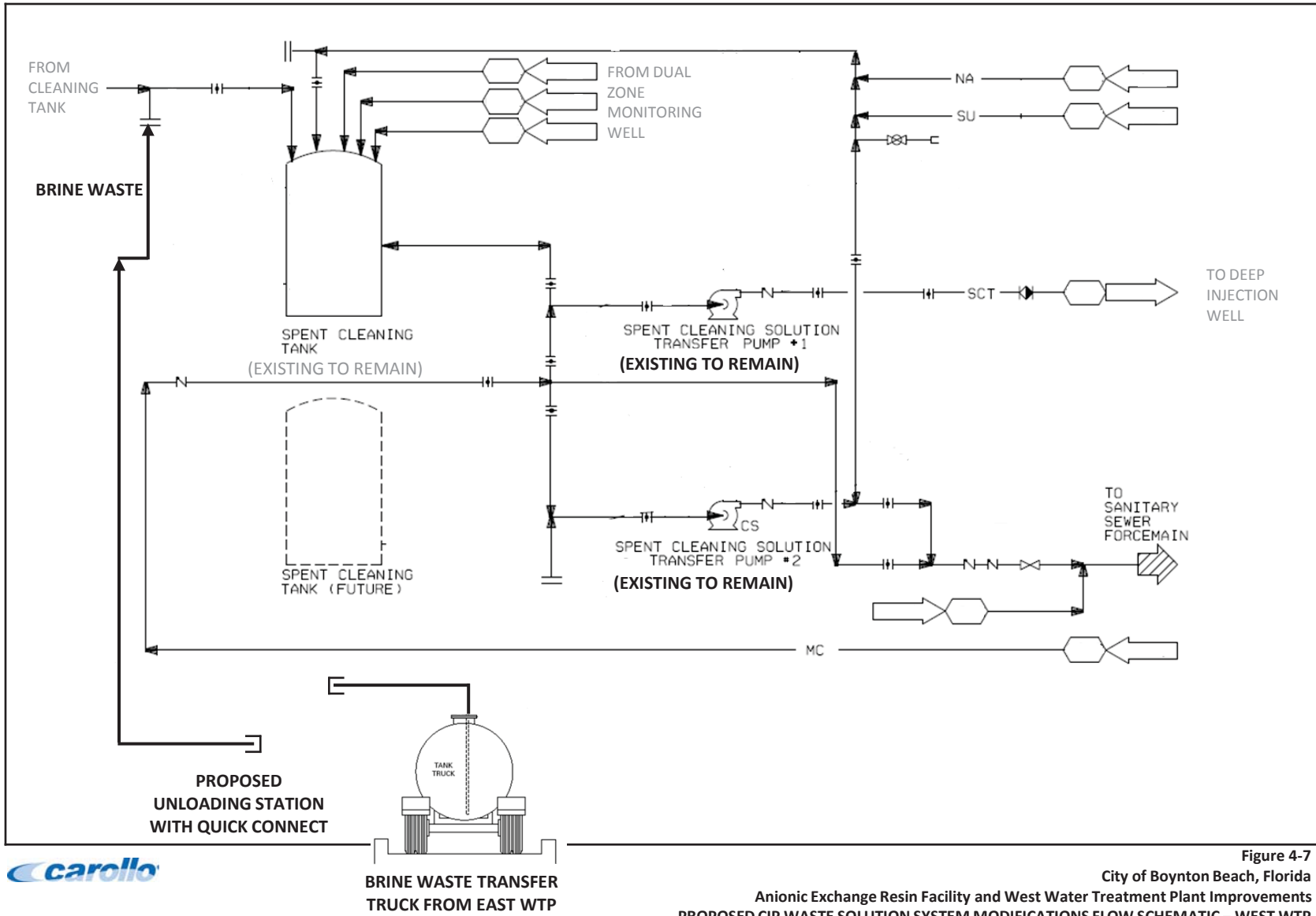


Figure 4-7

City of Boynton Beach, Florida

Anionic Exchange Resin Facility and West Water Treatment Plant Improvements  
PROPOSED CIP WASTE SOLUTION SYSTEM MODIFICATIONS FLOW SCHEMATIC – WEST WTP

JAN 2015

pw:\FL\Boynton Beach\9666B40\Disciplines\Process\BB\_West\_WTP\_PDR\_Figures

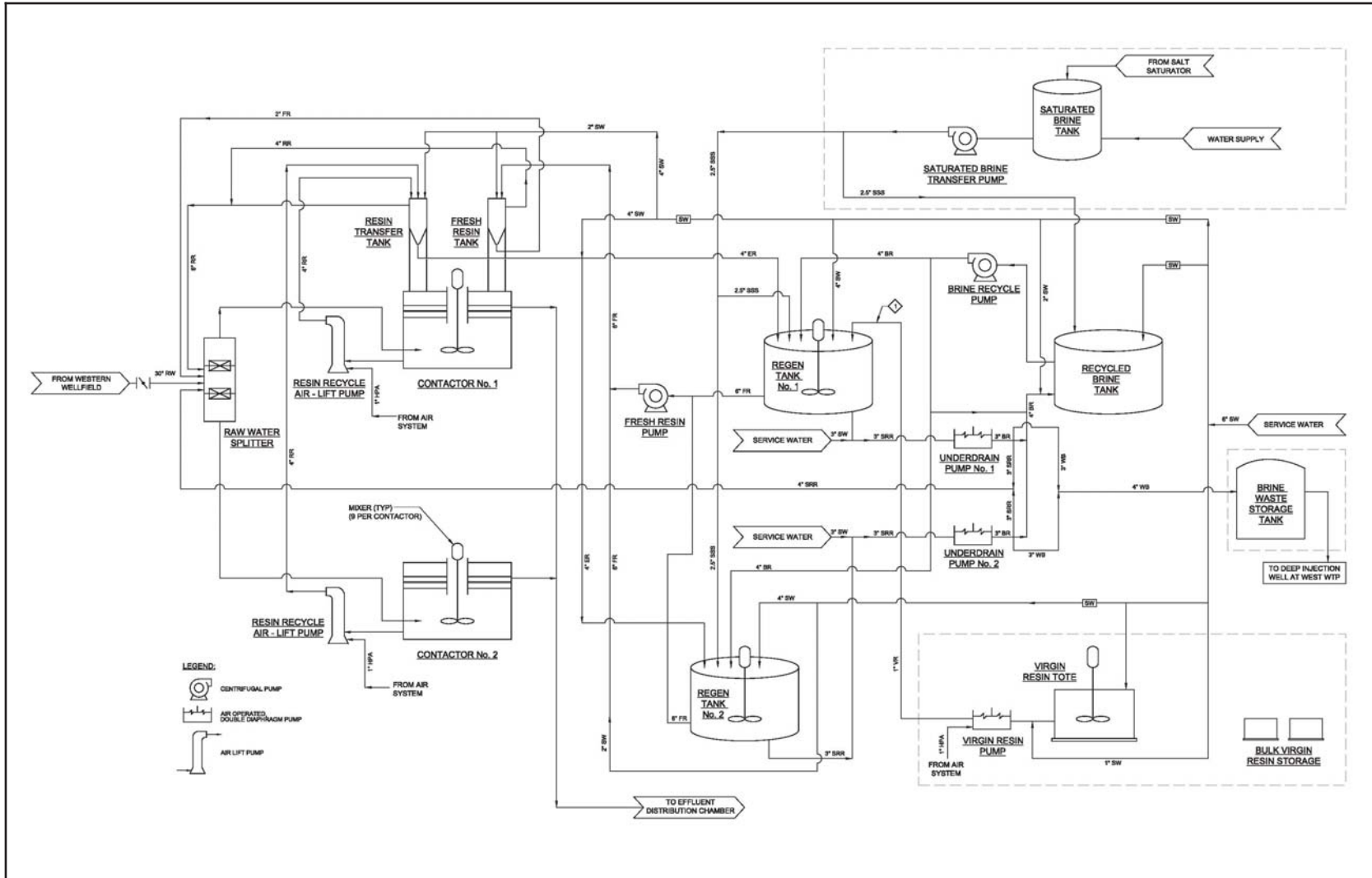


Figure 4-8  
City of Boynton Beach, Florida  
Anionic Exchange Resin Facility and East Water Treatment Plant Improvements  
MIEX® SYSTEM PROCESS SCHEMATIC – EAST WTP  
JAN 2015

pr://Carollo/Drawings/Civil/FL/Boynton Beach/9668400/03/Process/Process/AB1\_East WTP\_PDR\_Fig 4-9

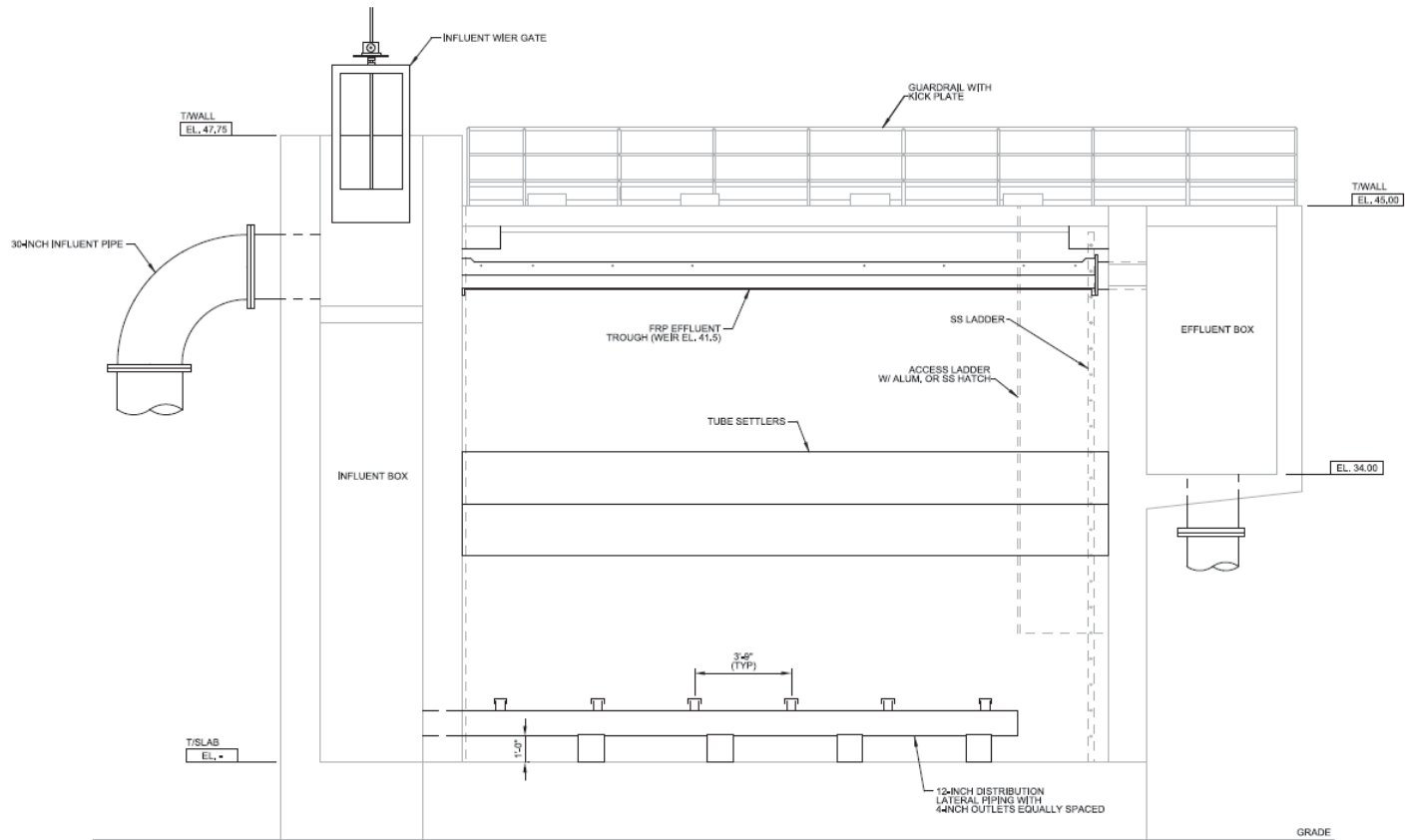
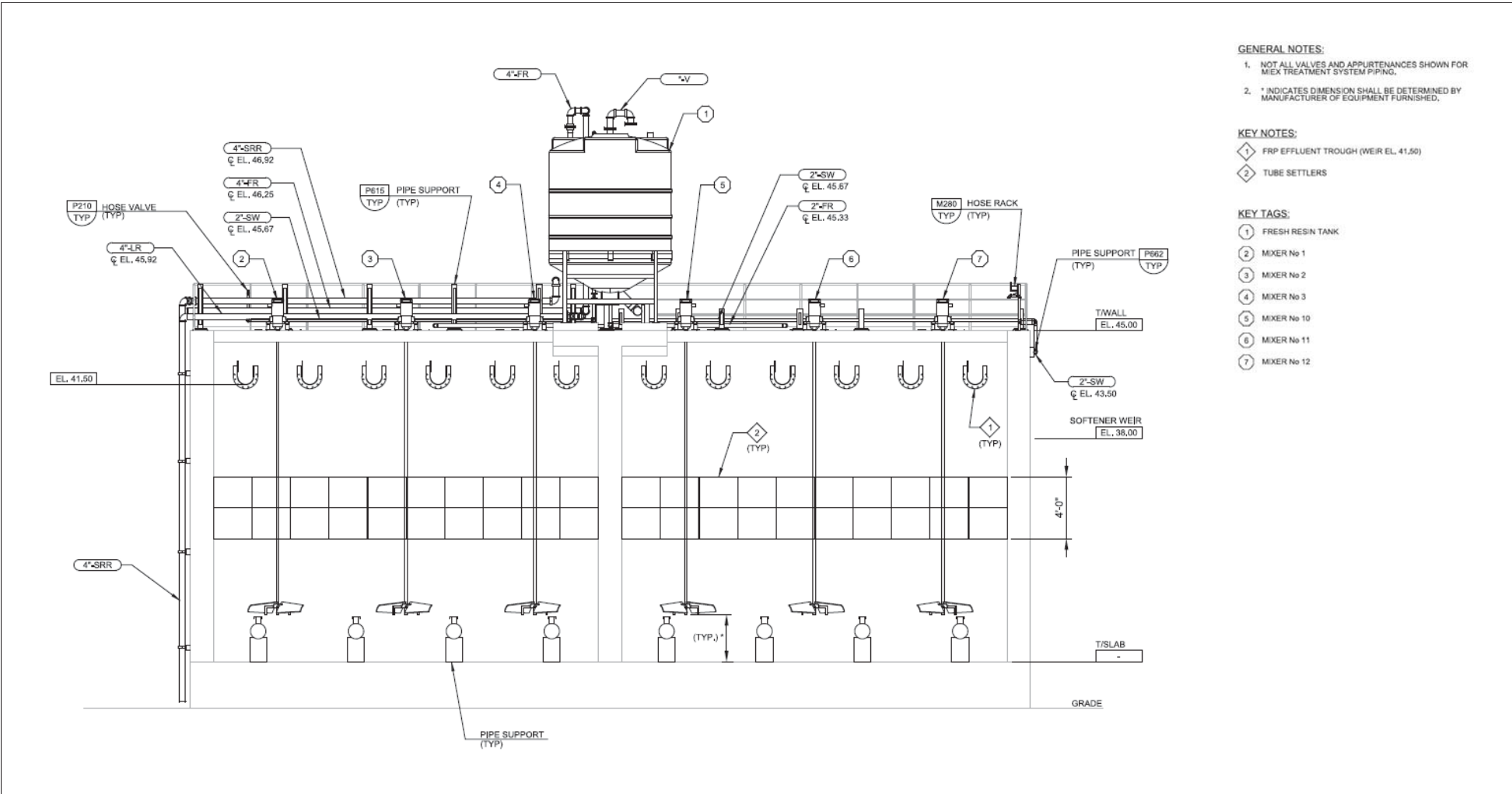


Figure 4-9  
City of Boynton Beach, Florida  
Anionic Exchange Resin Facility and East Water Treatment Plant Improvements  
MIEX® CONTACTOR SECTION I  
JAN 2015

pr://Carollo/Drawings/Client/FL/Boynton Beach/9668400/Process/ProcessABB\_East WTP IDR, Fig 4.2



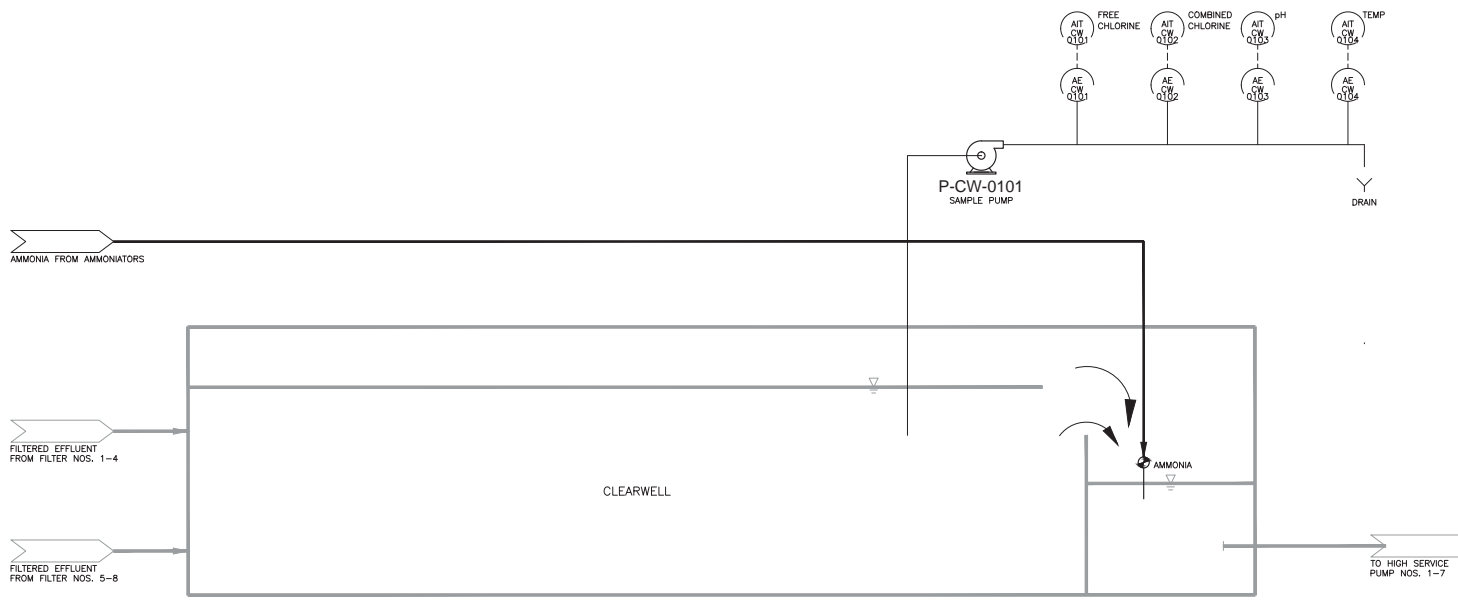
- GENERAL NOTES:**
1. NOT ALL VALVES AND APPURTENANCES SHOWN FOR MIX TREATMENT SYSTEM PIPING.
  2. \* INDICATES DIMENSION SHALL BE DETERMINED BY MANUFACTURER OF EQUIPMENT FURNISHED.

- KEY NOTES:**
- ◇ 1 FRP EFFLUENT TROUGH (WEIR EL. 41.50)
  - ◇ 2 TUBE SETTLERS

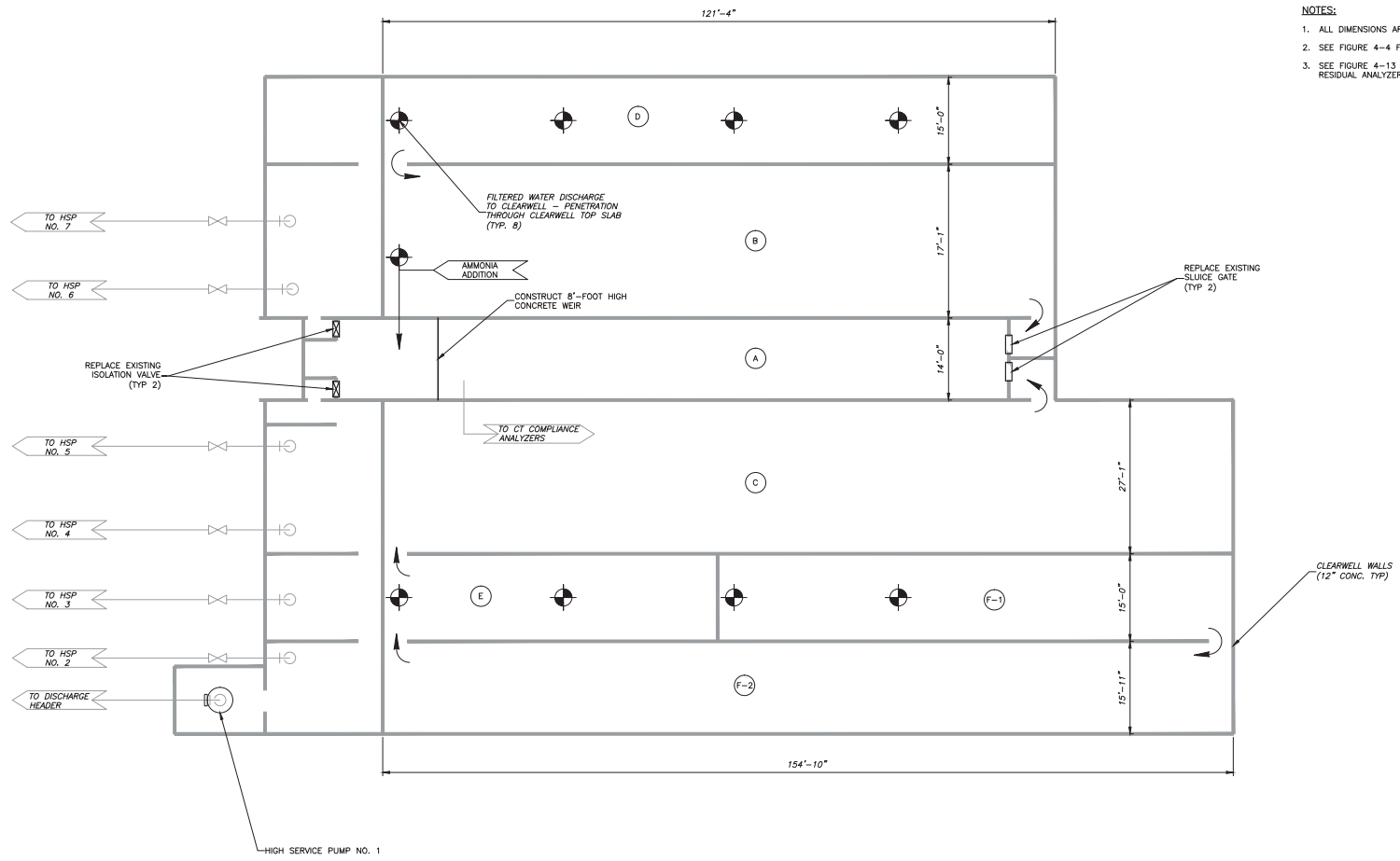
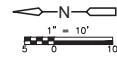
- KEY TAGS:**
- ① FRESH RESIN TANK
  - ② MIXER No 1
  - ③ MIXER No 2
  - ④ MIXER No 3
  - ⑤ MIXER No 10
  - ⑥ MIXER No 11
  - ⑦ MIXER No 12



Figure 4-10  
 City of Boynton Beach, Florida  
 Anionic Exchange Resin Facility and East Water Treatment Plant Improvements  
 MIECX® CONTACTOR SECTION II  
 JAN 2015



- NOTES:
1. SEE FIGURE 4-4 FOR NaOCl FEED LOCATION.
  2. SEE FIGURE 4-13 FOR COMBINED CHLORINE RESIDUAL ANALYZER LOCATION.



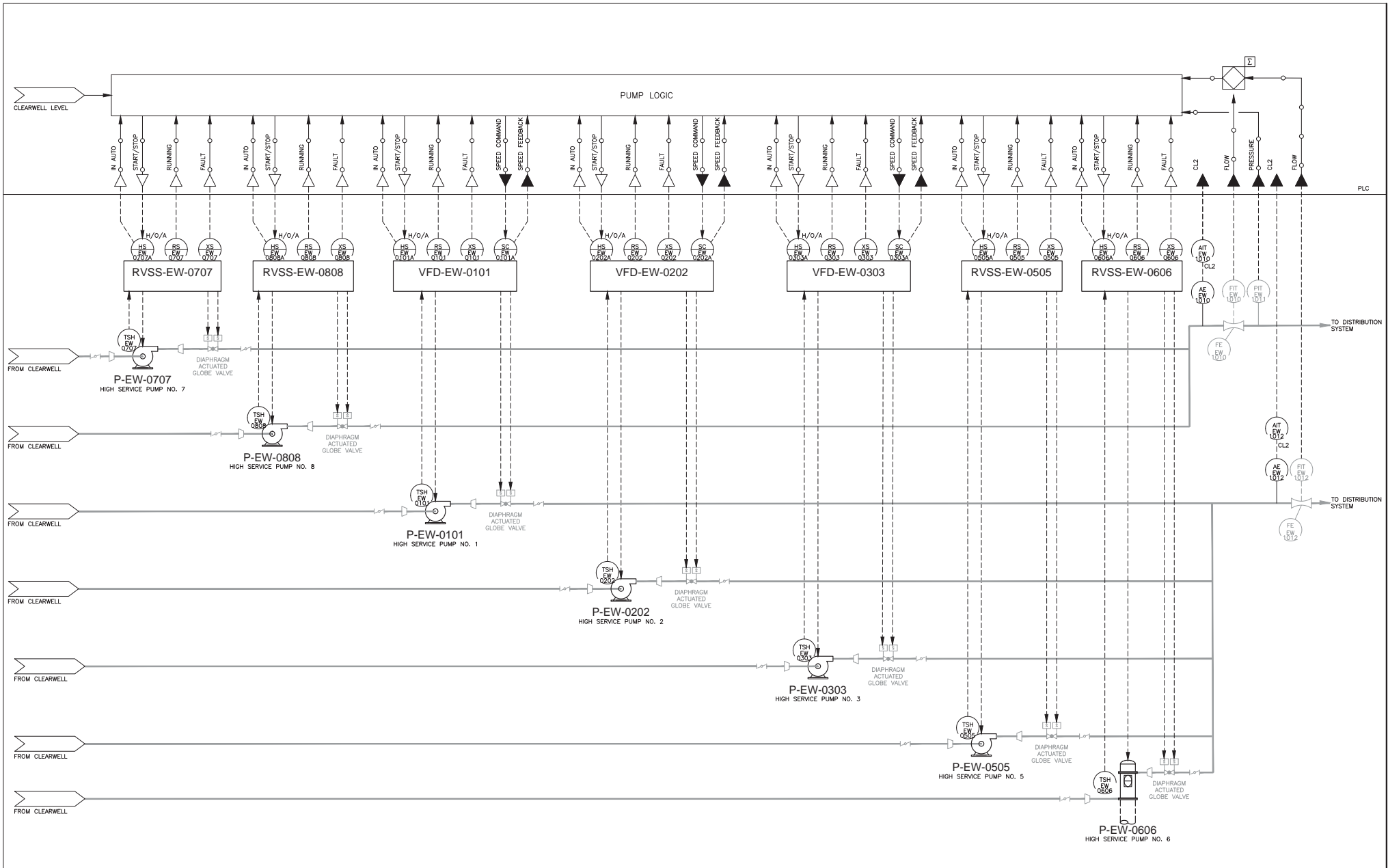
- NOTES:**
1. ALL DIMENSIONS ARE TO INSIDE FACE OF WALL.
  2. SEE FIGURE 4-4 FOR NaOCl FEED LOCATION.
  3. SEE FIGURE 4-13 FOR COMBINED CHLORINE RESIDUAL ANALYZER LOCATION.

PLAN  
1" = 10'-0"

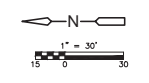
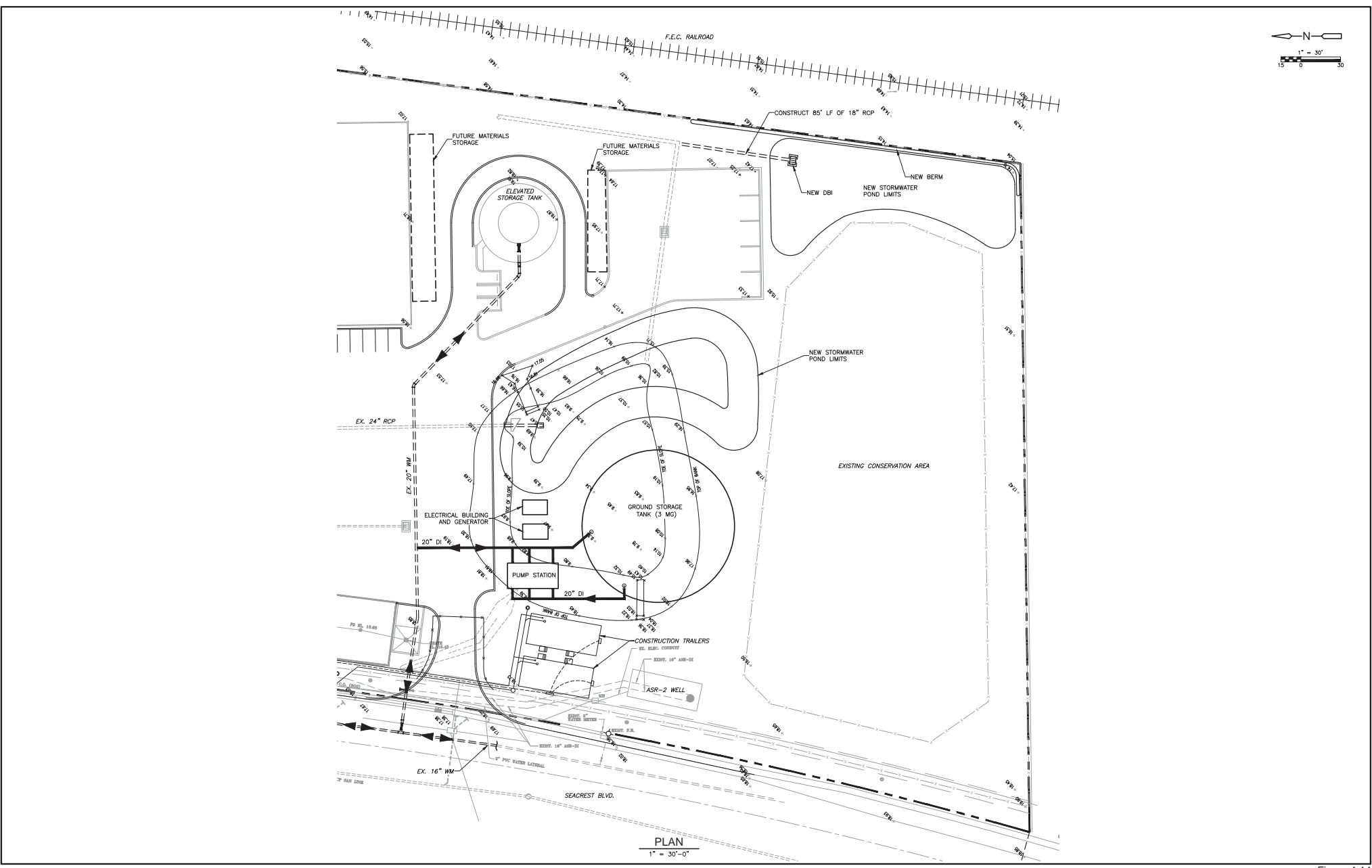
W:\Projects\2014\12\16\2014\_10\14148\_AW  
 Last saved by: AUSTD Time: 12/16/2014 10:14:48 AM  
 Project: C:\Users\AUSTD\Documents\Projects\Mechanical\10\_CADD\102252\Fig 4-12



Figure 4-12  
 City Of Boynton Beach, Florida  
 Anionic Exchange Resin Facility and East Water Treatment Plant Improvements  
 CLEARWELL MODIFICATIONS PLAN  
 JAN 2015



p:\projects\p1\p1\p1\Documents\5000\104280\02 Project Information\03 Data\50 CADD Graphics\Figures\4-13 Figure.dwg  
© 2012 CDM SMITH. ALL RIGHTS RESERVED.  
REUSE OF DOCUMENTS, THESE DOCUMENTS AND DESIGNS PROVIDED BY PROFESSIONAL SERVICE, INCORPORATED HEREIN, ARE THE PROPERTY OF CDM SMITH AND ARE NOT TO BE USED, IN WHOLE OR PART, FOR ANY OTHER PROJECT WITHOUT THE WRITTEN AUTHORIZATION OF CDM SMITH.



PLAN  
1" = 30'-0"



Figure 4-14  
City Of Boynton Beach, Florida  
Anionic Exchange Resin Facility and East Water Treatment Plant Improvements  
EAST WTP REPUMP STATION AND GST - PROPOSED YARD PIPING PLAN  
JAN 2015



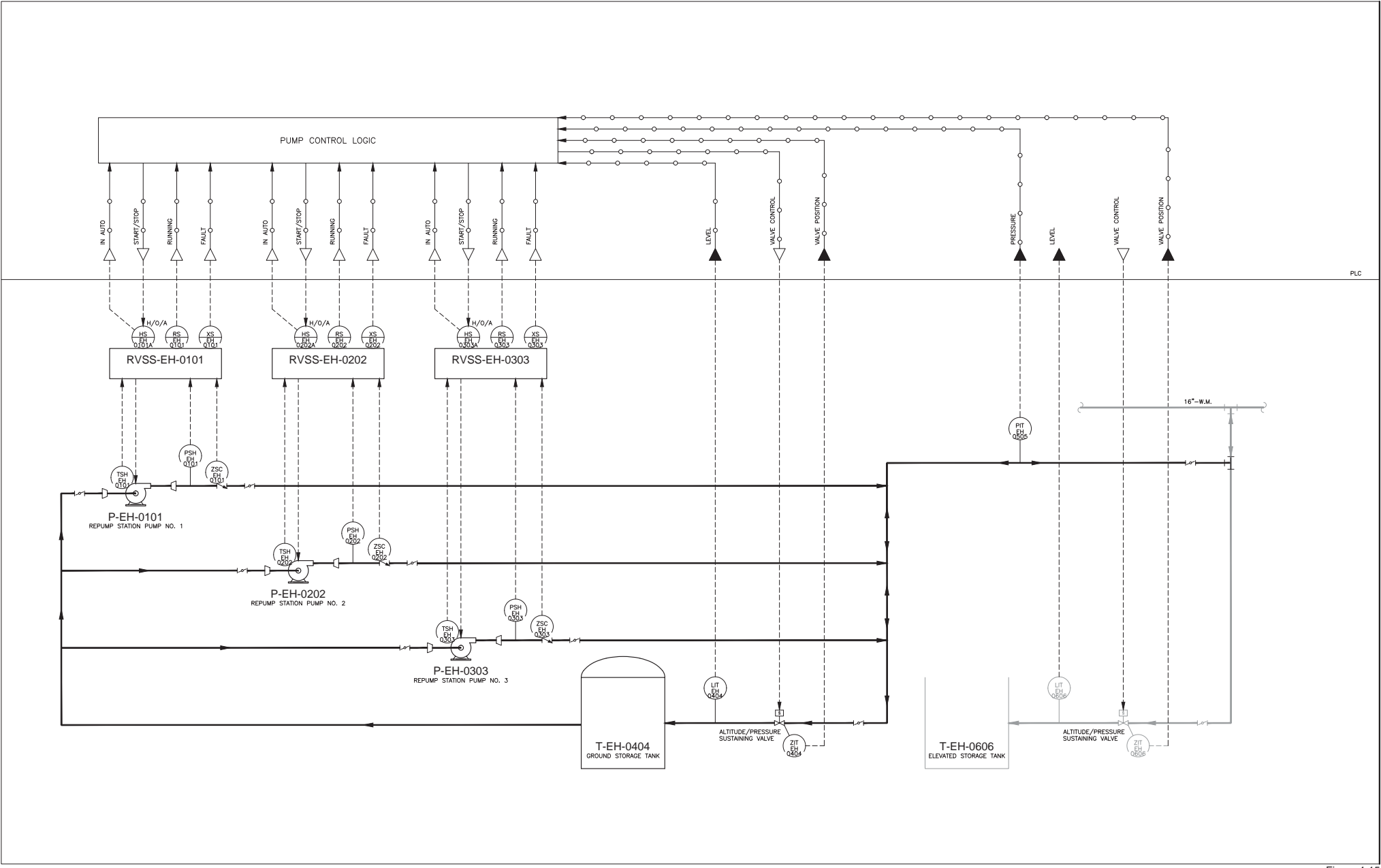
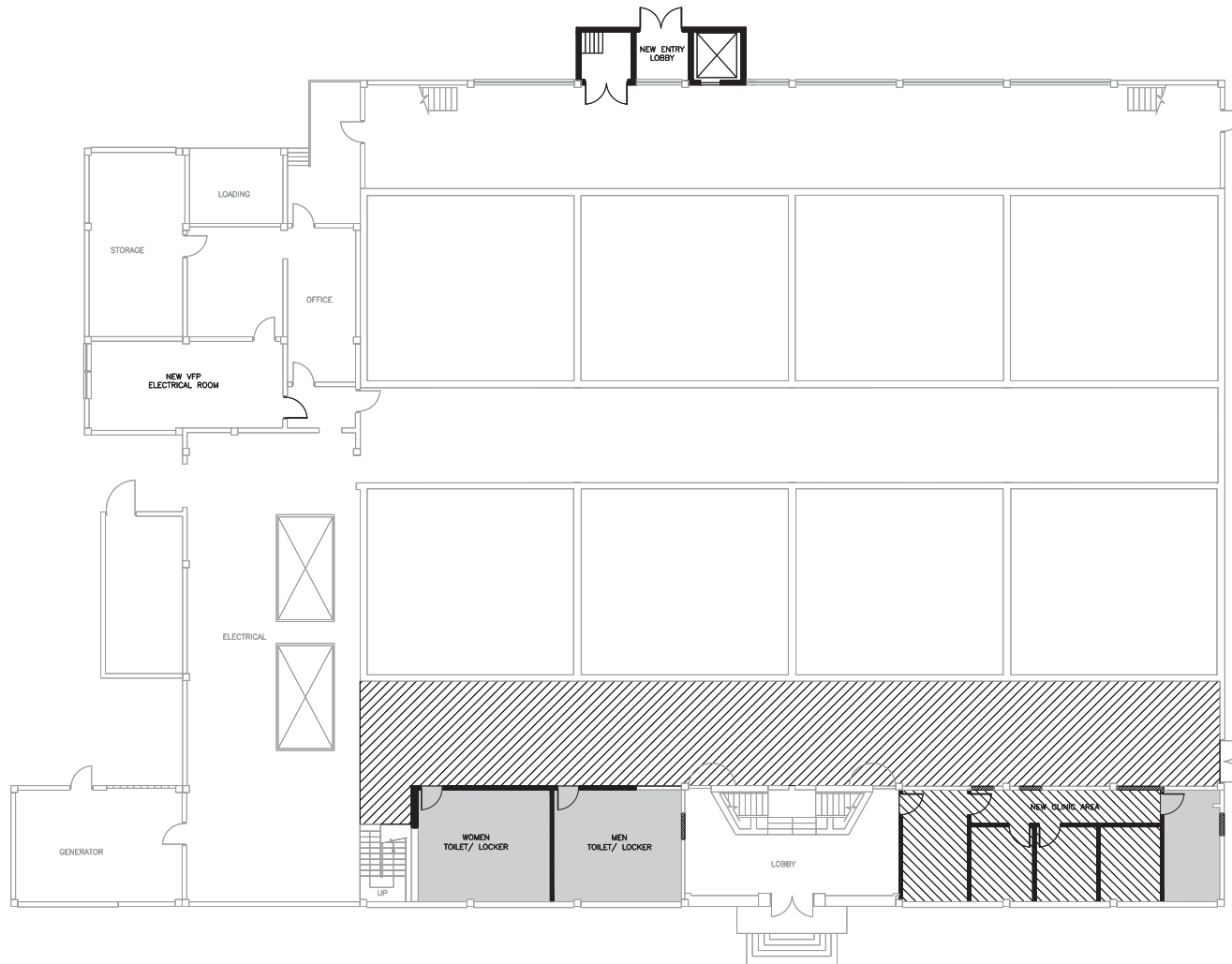
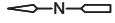


Figure 4-15  
 City of Boynton Beach, Florida  
 Anionic Exchange Resin Facility and East Water Treatment Plant Improvements  
 EAST WTP PLANT FINISHED WATER STORAGE AND REPUMP STATION P&ID  
 JAN 2015

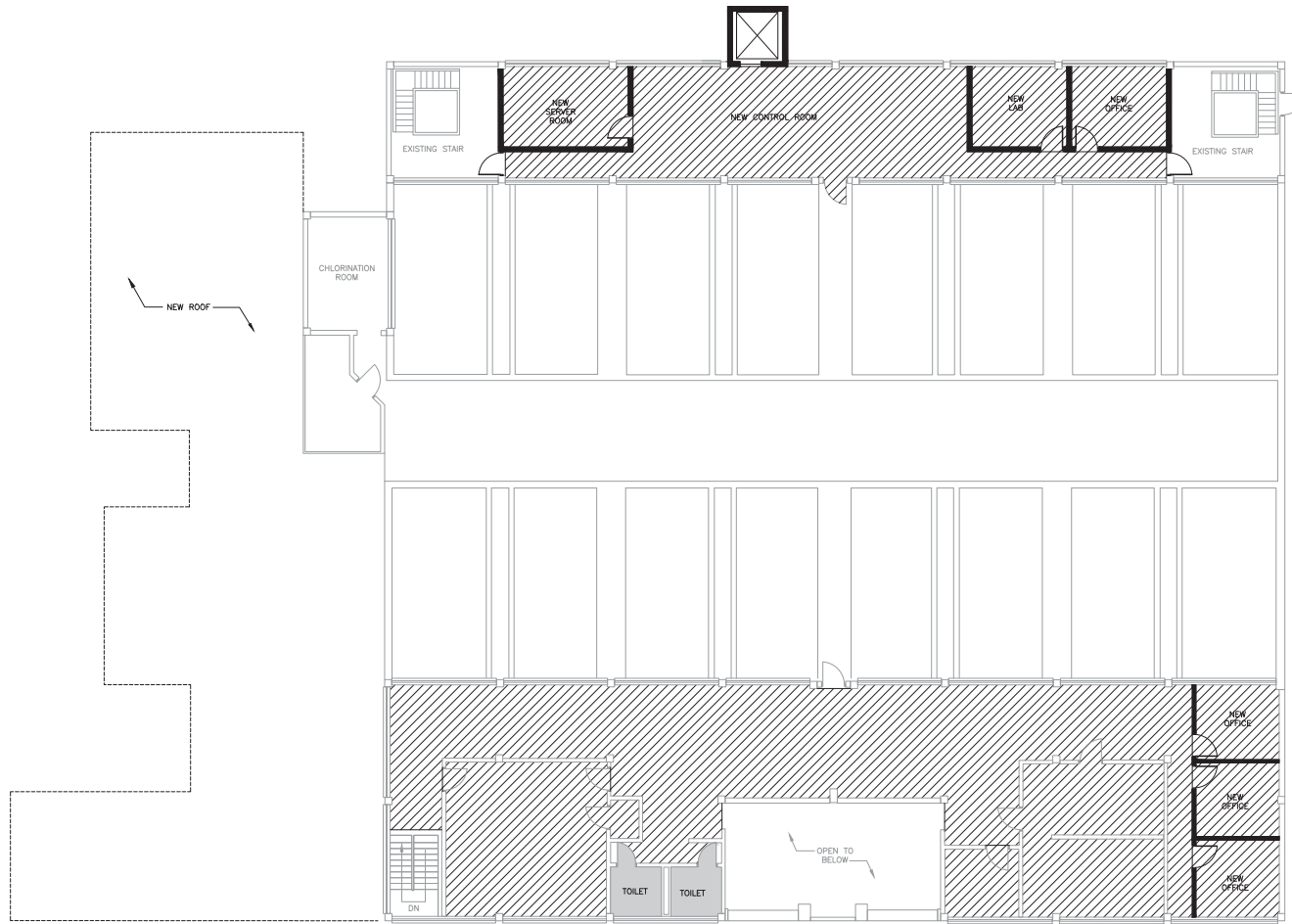
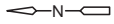


CONSTRUCTION FIRST FLOOR  
PLAN  
1/8" = 1'-0"

XREF: [CONC\_2436, CER001ST, CWP001ST] Images: 0  
Last saved by: AUSTIN on: 1/14/2019 1:54:23 PM  
Path: C:\Program Files\Autodesk\AutoCAD 2014\Design Services\ML\_304\02\02\010\_040\0101E059.dwg



Figure 4-16  
City Of Boynton Beach, Florida  
Anionic Exchange Resin Facility and East Water Treatment Plant Improvements  
CONTROL BUILDING FIRST FLOOR CONSTRUCTION PLAN



CONSTRUCTION SECOND FLOOR  
PLAN  
1/8" = 1'-0"

XREF: [C:\MS\_2436\_CER001ST\_01P001ST] Images: [ ]  
Last saved by: AUSTIN on 1/14/2015 1:54:23 PM  
Path: C:\Program Files\Autodesk\AutoCAD LT 2015\Drawings\Services\ML\_304\02\_24\10\_CAD\C001E059.dwg



Figure 4-17  
City Of Boynton Beach, Florida  
Anionic Exchange Resin Facility and East Water Treatment Plant Improvements  
CONTROL BUILDING SECOND FLOOR CONSTRUCTION PLAN  
JAN 2015

© 2012 CDM SMITH. ALL RIGHTS RESERVED. REUSE OF DOCUMENTS, THESE DOCUMENTS AND DESIGNS PROVIDED BY PROFESSIONAL SERVICE, INCORPORATED HEREIN, ARE THE PROPERTY OF CDM SMITH AND ARE NOT TO BE USED, IN WHOLE OR PART, FOR ANY OTHER PROJECT WITHOUT THE WRITTEN AUTHORIZATION OF CDM SMITH.

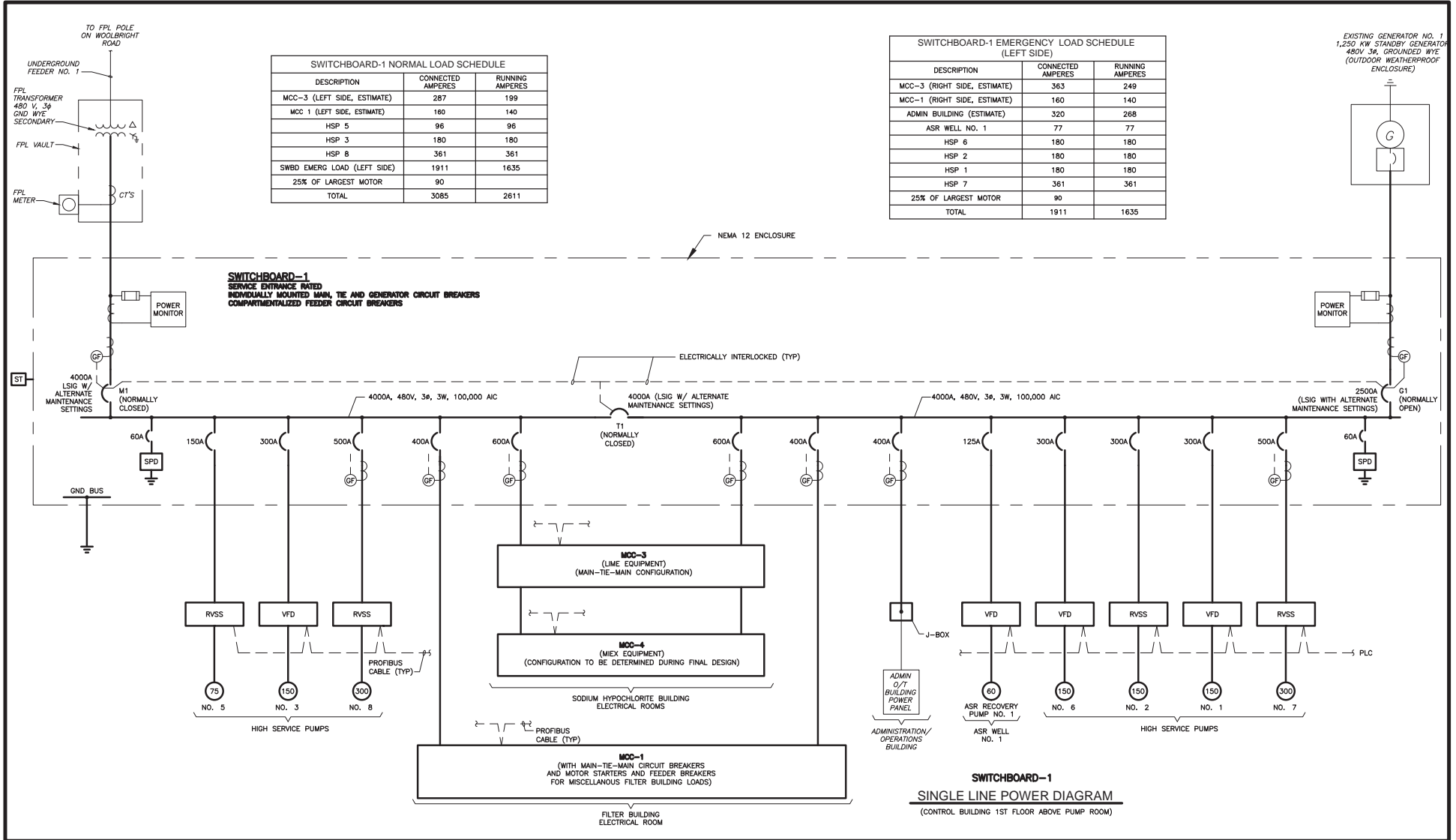


Figure 4-18  
City of Boynton Beach, Florida  
Anionic Exchange Resin Facility and East Water Treatment Plant Improvements  
SWITCHBOARD-1 SINGLE LINE POWER DIAGRAM  
JAN 2015

© 2012 CDM SMITH. ALL RIGHTS RESERVED. REUSE OF DOCUMENTS, THESE DOCUMENTS AND DESIGNS, PROVIDED BY PROFESSIONAL SERVICE, INCORPORATED HEREIN, ARE THE PROPERTY OF CDM SMITH AND ARE NOT TO BE USED, IN WHOLE OR PART, FOR ANY OTHER PROJECT WITHOUT THE WRITTEN AUTHORIZATION OF CDM SMITH.

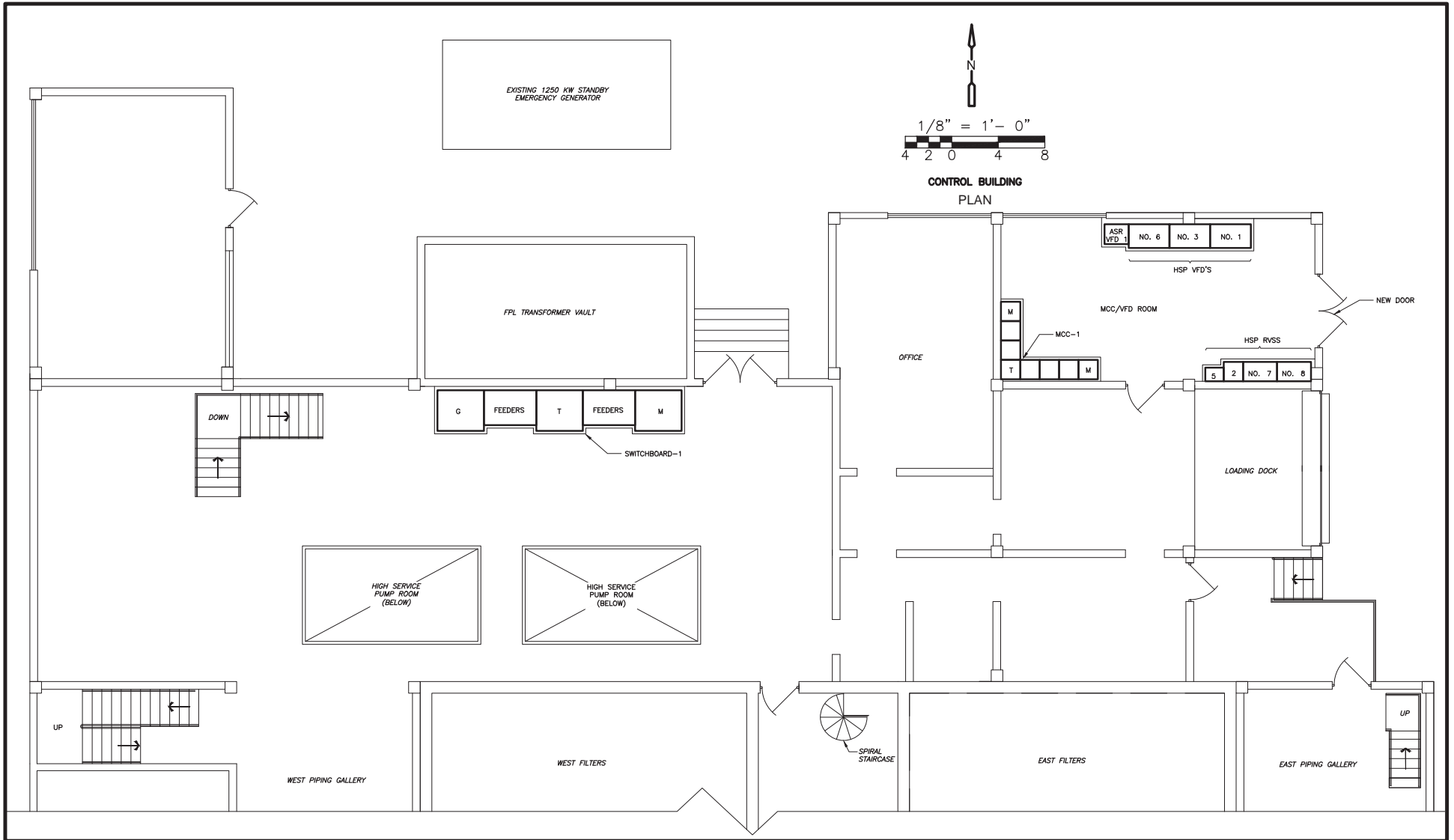
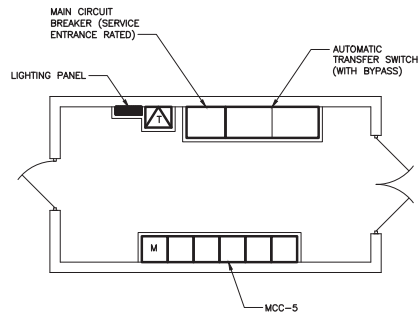
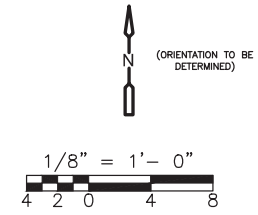
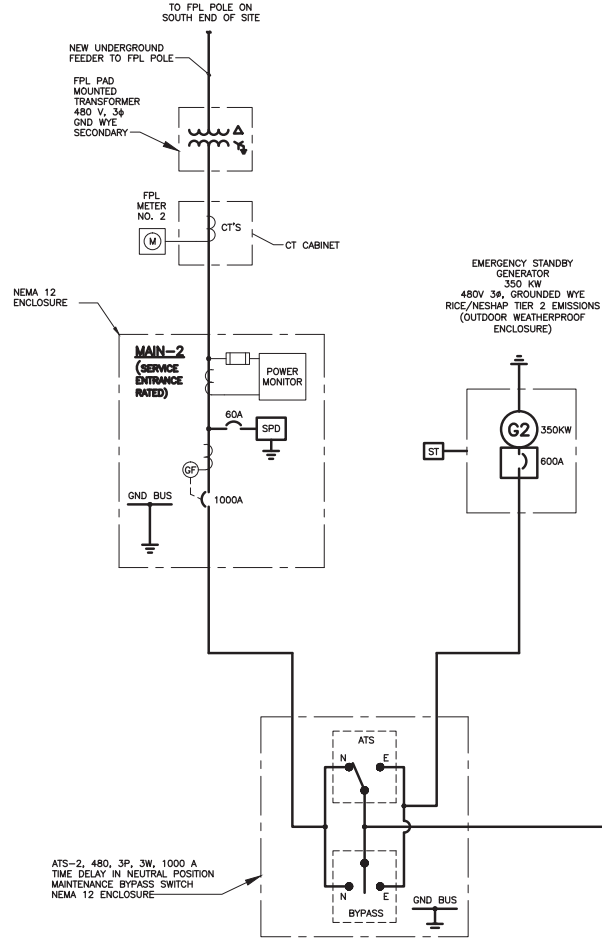


Figure 4-19  
City of Boynton Beach, Florida  
Anionic Exchange Resin Facility and East Water Treatment Plant Improvements  
CONTROL BUILDING - ELECTRICAL PLAN  
JAN 2015

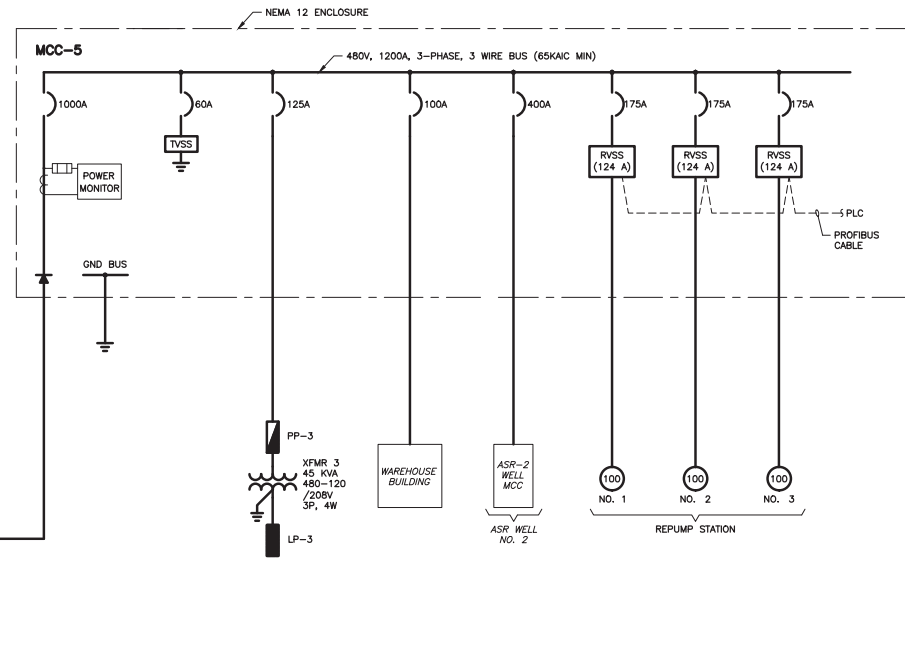


REPUMP STATION ELECTRICAL BUILDING  
PLAN

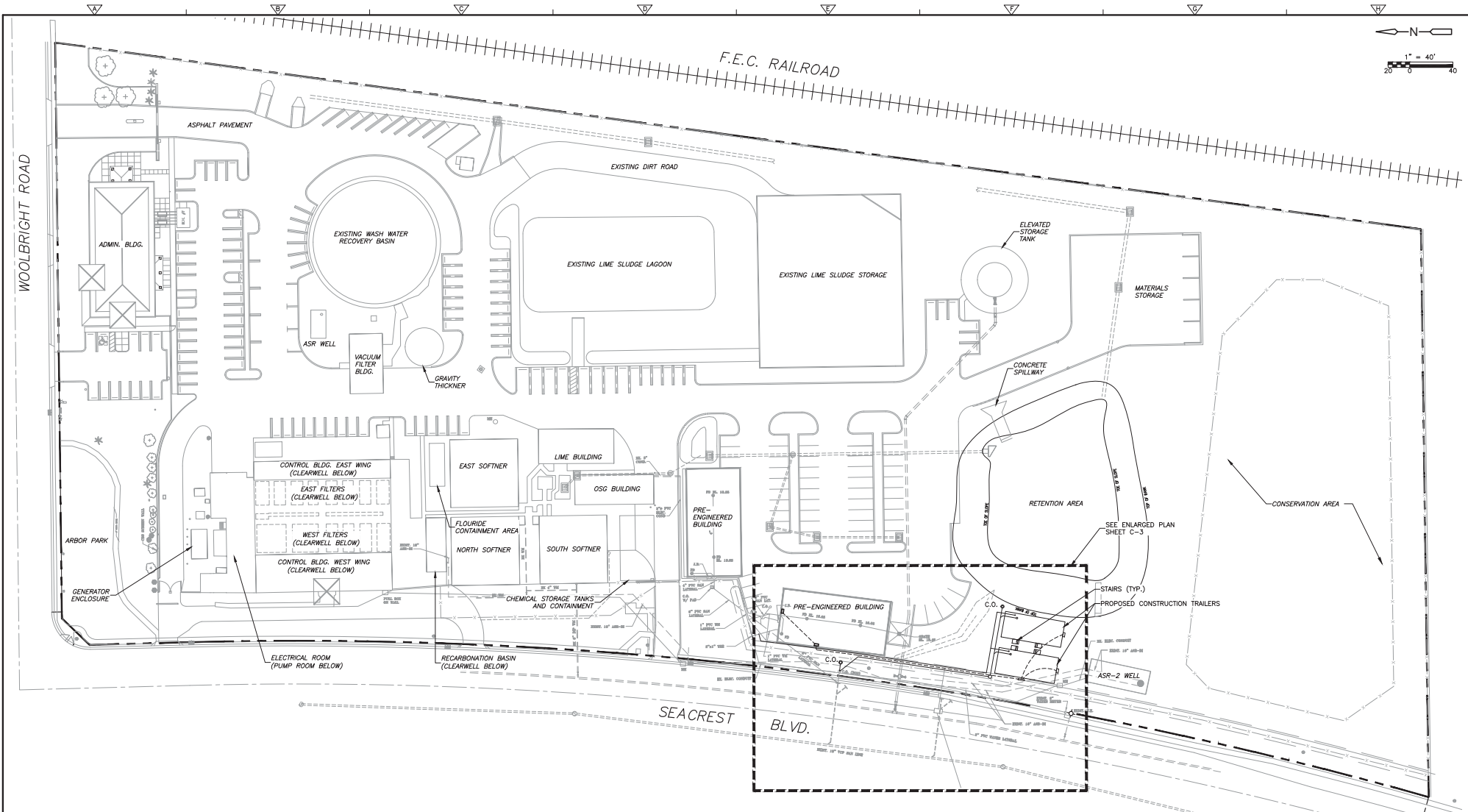
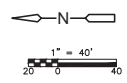




| MCC-5 LOAD SCHEDULE           |                   |                 |
|-------------------------------|-------------------|-----------------|
| DESCRIPTION                   | CONNECTED AMPERES | RUNNING AMPERES |
| PP 3 (ESTIMATE)               | 100               | 100             |
| WAREHOUSE BUILDING (ESTIMATE) | 50                | 40              |
| ASR 2 MCC (ESTIMATE)          | 83                | 83              |
| TRANSFER PUMP NO. 1           | 124               | 124             |
| TRANSFER PUMP NO. 2           | 124               | 124             |
| TRANSFER PUMP NO. 3           | 124               | -- (STANDBY)    |
| 25% OF LARGEST MOTOR          | 31                |                 |
| <b>TOTAL</b>                  | <b>636</b>        | <b>471</b>      |



**MCC-5**  
**SINGLE LINE POWER DIAGRAM**  
(REPUMP STATION ELECTRICAL BUILDING)



XREF: C:\MS\PLANS\_C\00001517\_1\sheet.dwg  
 Last saved by: MATHIESEJ (Time: 1/13/2015 3:24:56 PM)  
 File: \\server\ppp\PPM\JMT\00001\042826\04 Design Services MM\_2014\02 CHV10 CAD\000251.dwg  
 PLEASE DO NOT SCALE THESE DOCUMENTS AND DESIGNS PROVIDED BY PROFESSIONAL SERVICE, INCORPORATED. HEREIN ARE THE PROPERTY OF CDM SMITH AND ARE NOT TO BE USED, IN WHOLE OR PART, FOR ANY OTHER PROJECT WITHOUT THE WRITTEN AUTHORIZATION OF CDM SMITH.

| REV. NO. | DATE | DRWN | CHKD | REMARKS |
|----------|------|------|------|---------|
|          |      |      |      |         |
|          |      |      |      |         |
|          |      |      |      |         |

DESIGNED BY: C. MONTGOMERY  
 DRAWN BY: C. SCOTT  
 SHEET CHECK'D BY: X  
 CROSS CHECK'D BY: X  
 APPROVED BY: X  
 DATE: JANUARY 2015



CITY OF BOYNTON BEACH  
 UTILITIES DEPARTMENT  
**BOYNTON BEACH**  
 EAST WATER TREATMENT PLANT

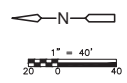
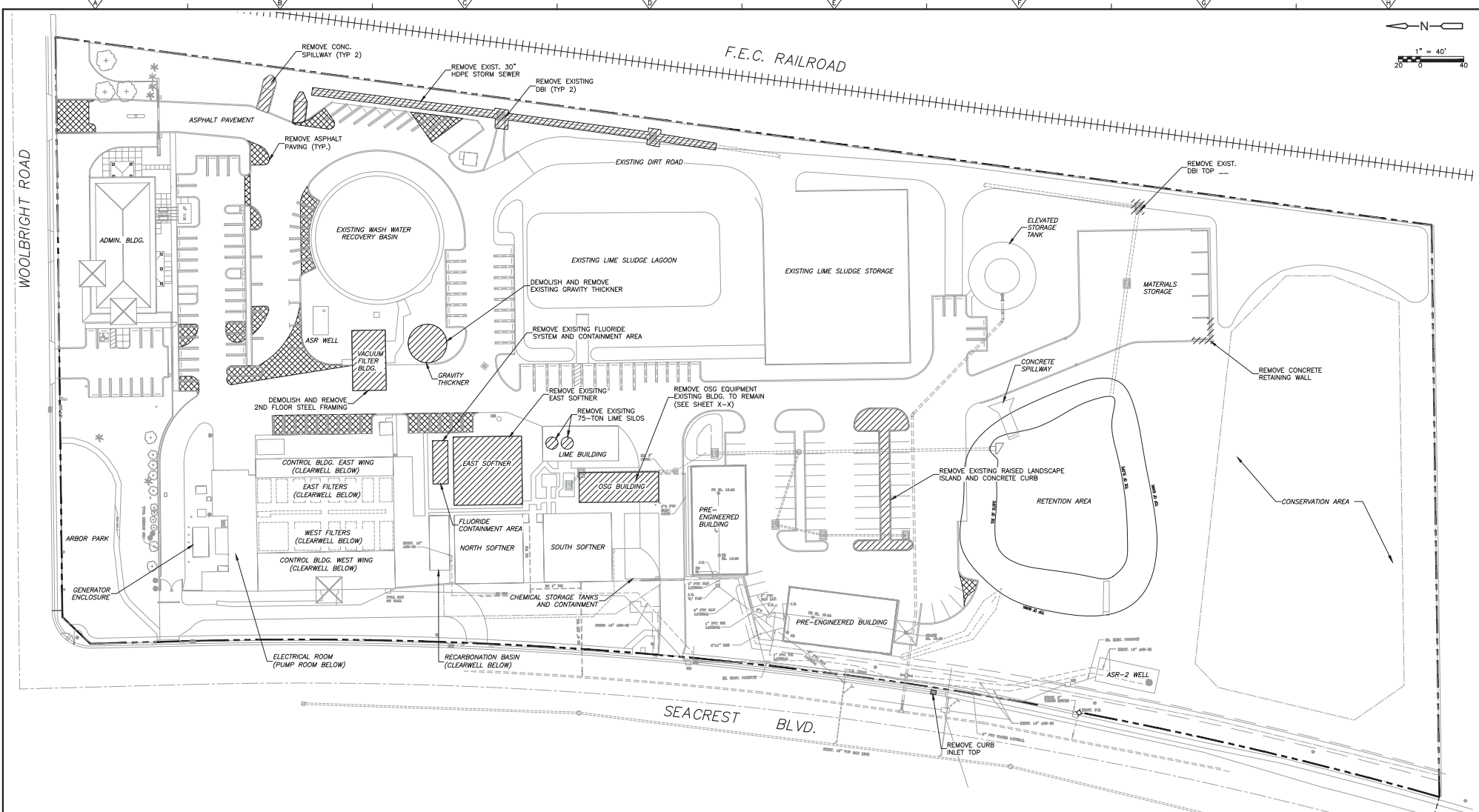
EXISTING SITE PLAN  
 SHEET NO. C-2

DATE: CRAIG C MONTGOMERY  
 PE NO. 45953  
 PROJECT NO. 5000-104280  
 FILE NAME: C00251PL.DWG  
 SHEET NO. C-2  
 SITE PLAN REVIEW





XREF: [CAG, SAGE, CER001ST] Inset: [ ]  
 Last saved by: S007NC Time: 1/13/2015 10:06:42 AM  
 path: \\server\pp\PM\JMH\3000\104280\CA Design Services\ML\_2014\02 CHV10 CAD\0040MPL.dwg  
 REUSE OF DOCUMENTS: THESE DOCUMENTS AND DESIGNS PROVIDED BY PROFESSIONAL SERVICE, INCORPORATED. HEREIN ARE THE PROPERTY OF CDM SMITH AND ARE NOT TO BE USED, IN WHOLE OR PART, FOR ANY OTHER PROJECT WITHOUT THE WRITTEN AUTHORIZATION OF CDM SMITH.



| REV. NO. | DATE | DRWN | CHKD | REMARKS |
|----------|------|------|------|---------|
|          |      |      |      |         |
|          |      |      |      |         |
|          |      |      |      |         |

DESIGNED BY: C. MONTGOMERY  
 DRAWN BY: C. SCOTT  
 SHEET CHK'D BY: X  
 CROSS CHK'D BY: X  
 APPROVED BY: X  
 DATE: JANUARY 2015



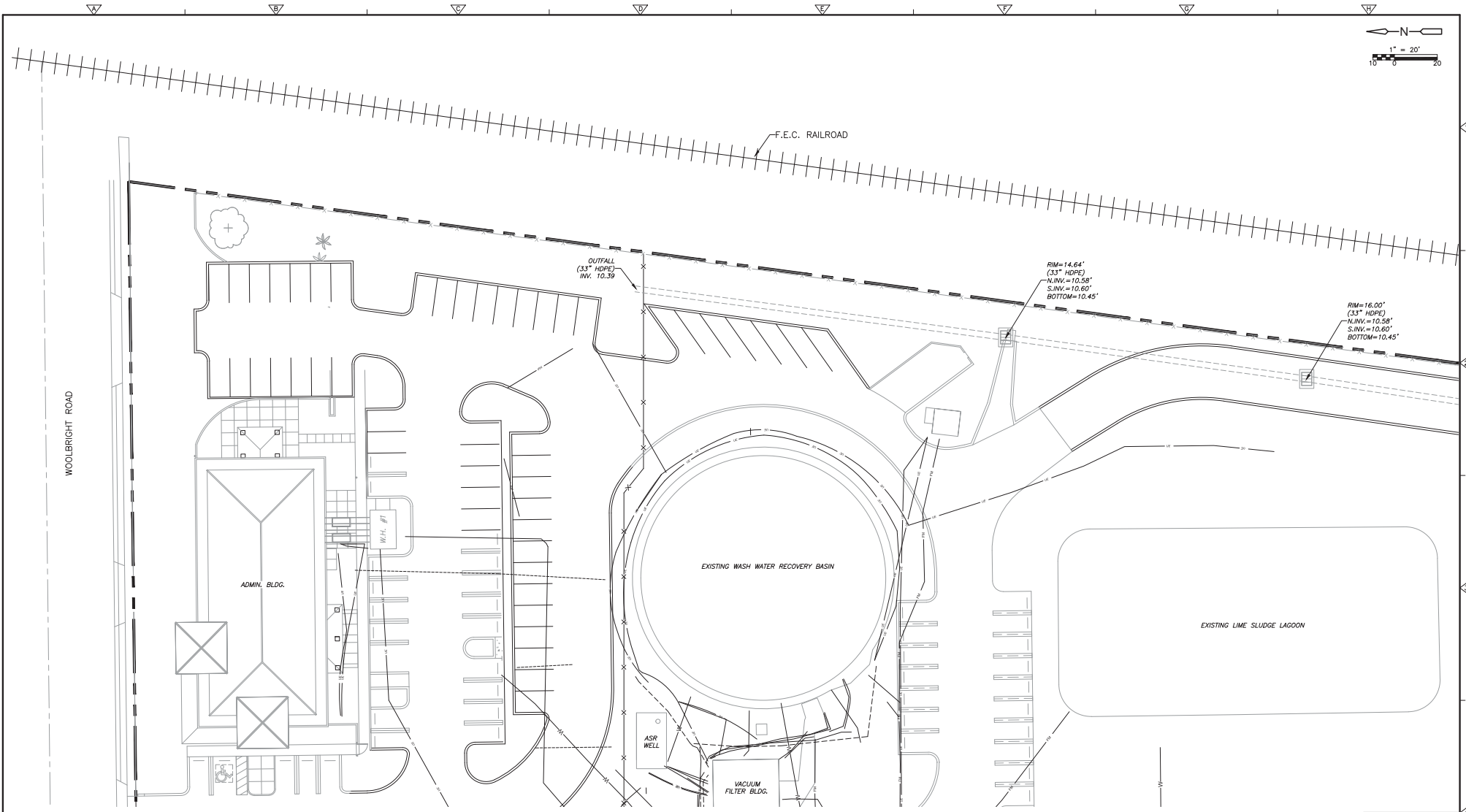
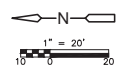
CITY OF BOYNTON BEACH  
 UTILITIES DEPARTMENT  
**BOYNTON BEACH**  
**EAST WATER TREATMENT PLANT**

**DEMOLITION PLAN**

DATE: CRAIG C MONTGOMERY  
 PE NO. 45953  
 PROJECT NO. 5000-104280  
 FILE NAME: C0040MPL.DWG  
 SHEET NO.  
**C-4**

SITE PLAN REVIEW





XREF: C:\GAS\STATE\_C\PROJECT\_C\0501157\_01.dwg - Project: [ ]  
 Last saved by: 5027MC Time: 1/13/2015 11:55:58 AM  
 p:\1\Users\ppf\PPF\JWA\3000\104285\04 Design Services ML\_2015\_02 CH1\10 CAD\007PPL.dwg  
 REUSE OF DOCUMENTS: THESE DOCUMENTS AND DESIGNS PROVIDED BY PROFESSIONAL SERVICE, INCORPORATED. HEREIN, ARE THE PROPERTY OF CDM SMITH AND ARE NOT TO BE USED, IN WHOLE OR PART, FOR ANY OTHER PROJECT WITHOUT THE WRITTEN AUTHORIZATION OF CDM SMITH.

| REV. NO. | DATE | DRWN | CHKD | REMARKS |
|----------|------|------|------|---------|
|          |      |      |      |         |
|          |      |      |      |         |
|          |      |      |      |         |

DESIGNED BY: C. MONTGOMERY  
 DRAWN BY: C. SCOTT  
 SHEET CHECK'D BY: X  
 CROSS CHECK'D BY: X  
 APPROVED BY: X  
 DATE: JANUARY 2015



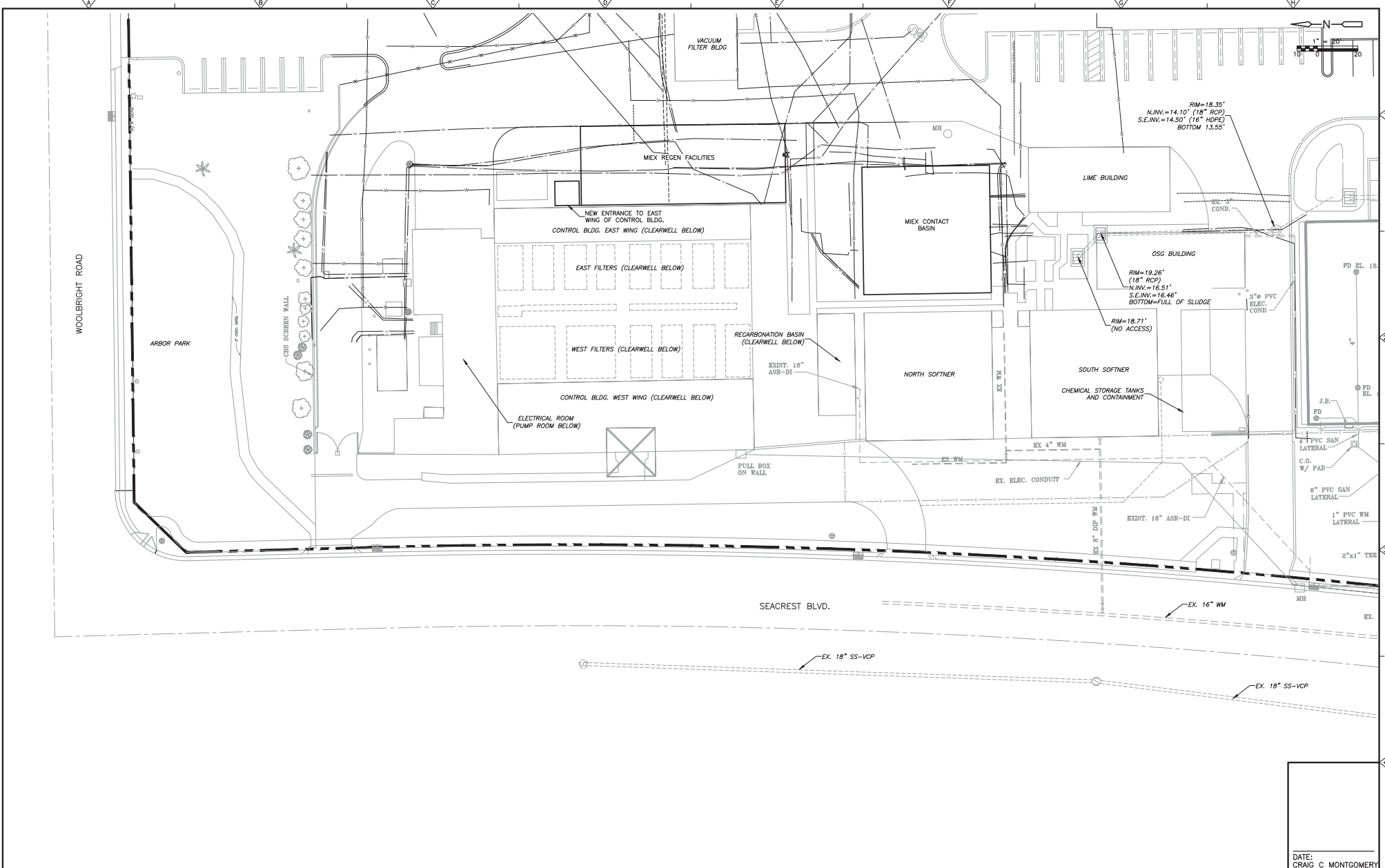
CITY OF BOYNTON BEACH  
 UTILITIES DEPARTMENT  
**BOYNTON BEACH**  
 EAST WATER TREATMENT PLANT

YARD PIPING PLAN - NORTHEAST

DATE: CRAIG C MONTGOMERY  
 PE NO. 45953  
 PROJECT NO. 5000-104280  
 FILE NAME: C006VFPPL.DWG  
 SHEET NO. **C-6**

SITE PLAN REVIEW

XREF: [C:\G:\PLANS\_CADD\PROJECTS\52001517\52001517.dwg] Project: [ ]  
 Last saved by: 52001517 Time: 1/13/2015 12:05:58 PM  
 File: \Users\pmp\My Documents\Projects\52001517\52001517.dwg  
 REUSE OF DOCUMENTS: THESE DOCUMENTS AND DESIGNS PROVIDED BY PROFESSIONAL SERVICE, INCORPORATED HEREIN ARE THE PROPERTY OF CDM SMITH AND ARE NOT TO BE USED, IN WHOLE OR PART, FOR ANY OTHER PROJECT WITHOUT THE WRITTEN AUTHORIZATION OF CDM SMITH.



| REV. NO. | DATE | DRWN | CHKD | REMARKS |
|----------|------|------|------|---------|
|          |      |      |      |         |
|          |      |      |      |         |
|          |      |      |      |         |

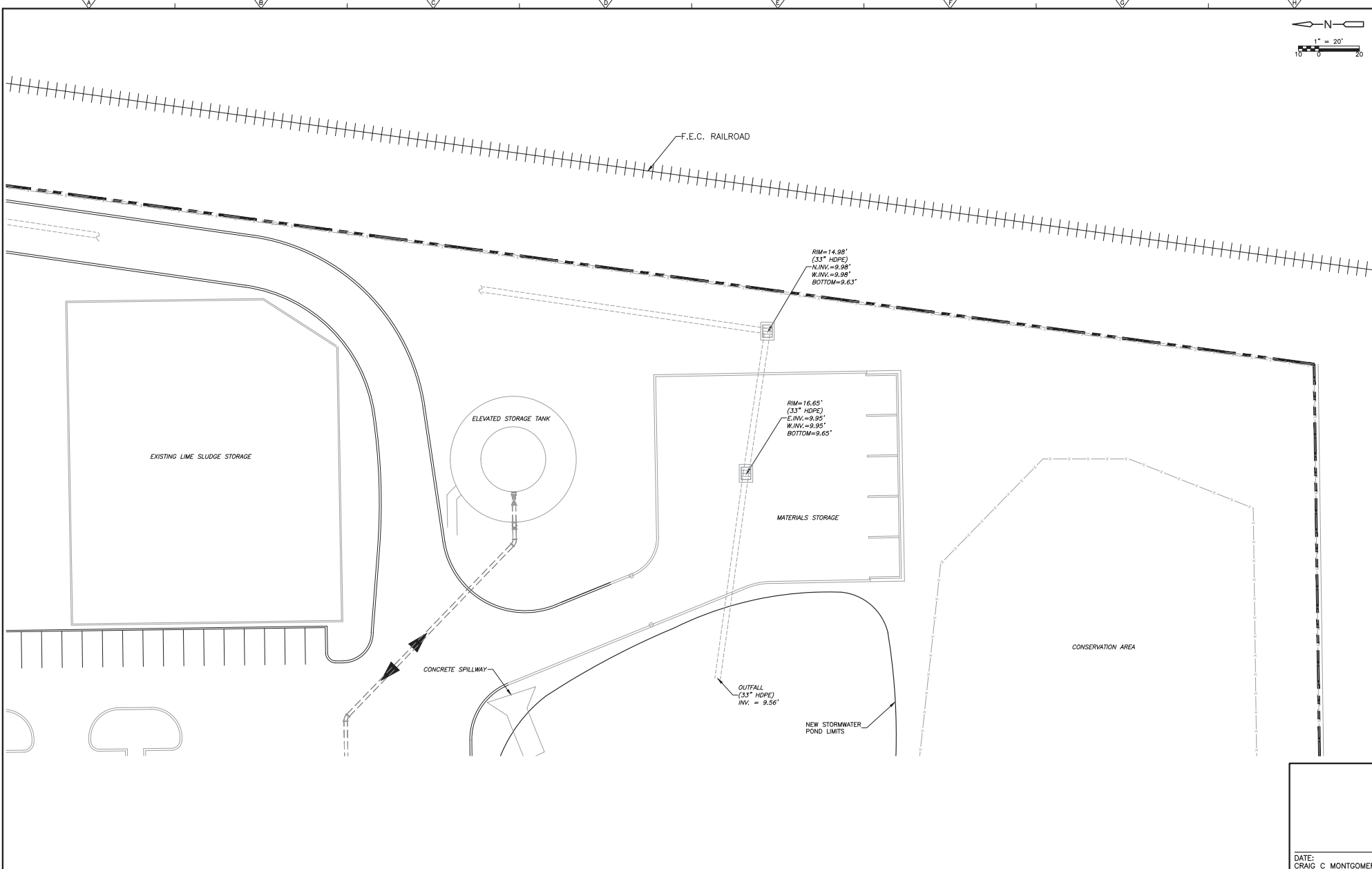
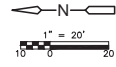
DESIGNED BY: C. MONTGOMERY  
 DRAWN BY: C. SCOTT  
 SHEET CHECKED BY: X  
 CROSS CHECKED BY: X  
 APPROVED BY: X  
 DATE: JANUARY 2015



CITY OF BOYNTON BEACH  
 UTILITIES DEPARTMENT  
**BOYNTON BEACH**  
 EAST WATER TREATMENT PLANT

YARD PIPING PLAN - NORTHWEST  
 SHEET NO. C-7

DATE: CRAIG C MONTGOMERY  
 PE NO. 45953  
 PROJECT NO. 5000-104280  
 FILE NAME: C007YFPL.DWG  
 SHEET NO. C-7  
 SITE PLAN REVIEW



XREF: [C:\MS\PLANS\_CADD\PROJECTS\_CADD\50001\04\DWG\0008YFPL.dwg] - Project: [ ]  
 Last saved by: 5007MC Time: 1/13/2015 12:13:38 PM  
 p:\5007mc\ppl\ppl\JMH\50001\04\DWG\04 Design Services ML\_3017\02 CHN\10 CADD\0008YFPL.dwg  
 REUSE OF DOCUMENTS: THESE DOCUMENTS AND DESIGNS PROVIDED BY PROFESSIONAL SERVICE, INCORPORATED. HEREIN ARE THE PROPERTY OF CDM SMITH AND ARE NOT TO BE USED, IN WHOLE OR PART, FOR ANY OTHER PROJECT WITHOUT THE WRITTEN AUTHORIZATION OF CDM SMITH.

| REV. NO. | DATE | DRWN | CHKD | REMARKS |
|----------|------|------|------|---------|
|          |      |      |      |         |
|          |      |      |      |         |
|          |      |      |      |         |

DESIGNED BY: C. MONTGOMERY  
 DRAWN BY: C. SCOTT  
 SHEET CHECK'D BY: X  
 CROSS CHECK'D BY: X  
 APPROVED BY: X  
 DATE: JANUARY 2015



CITY OF BOYNTON BEACH  
 UTILITIES DEPARTMENT  
**BOYNTON BEACH**  
 EAST WATER TREATMENT PLANT

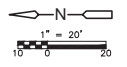
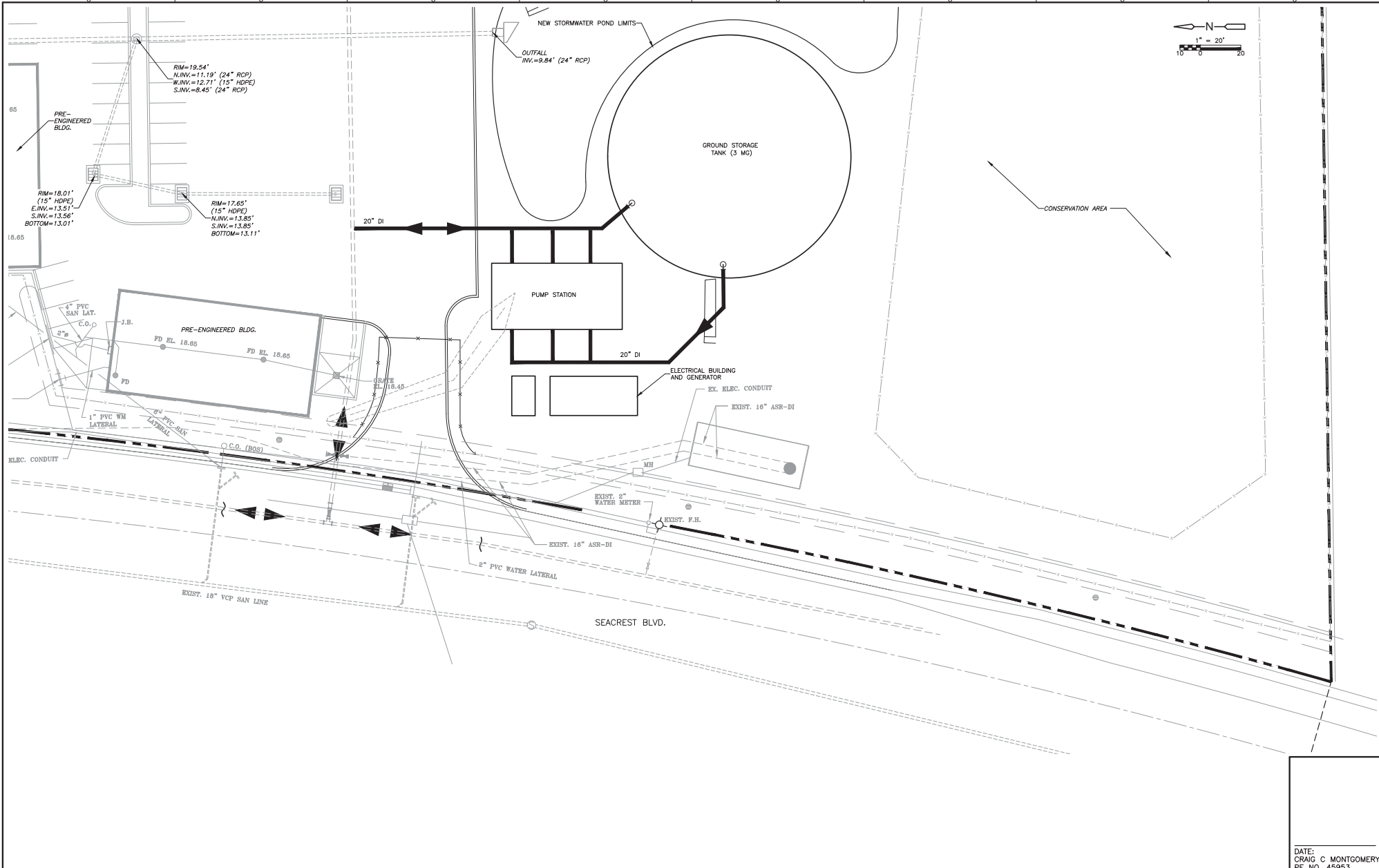
YARD PIPING PLAN - NORTHWEST

DATE: CRAIG C MONTGOMERY  
 PE NO. 45953  
 PROJECT NO. 5000-104280  
 FILE NAME: 0008YFPL.DWG  
 SHEET NO. C-8

SITE PLAN REVIEW



XREF: [C:\G:\STATE\_C\PROJECT\_C\05001517\Inch.dwg] Insert: [ ]  
 Last saved by: 5207NVC Time: 1/13/2015 1:25:41 PM  
 p:\1\Utility\p\PPM\JMN\3000\104285\04 Design Services MM\_Sort\02 CH\10 CAD\0009PPL.dwg  
 REUSE OF DOCUMENTS: THESE DOCUMENTS AND DESIGNS PROVIDED BY PROFESSIONAL SERVICE, INCORPORATED. HEREIN, ARE THE PROPERTY OF CDM SMITH AND ARE NOT TO BE USED, IN WHOLE OR PART, FOR ANY OTHER PROJECT WITHOUT THE WRITTEN AUTHORIZATION OF CDM SMITH.



| REV. NO. | DATE | DRWN | CHKD | REMARKS |
|----------|------|------|------|---------|
|          |      |      |      |         |
|          |      |      |      |         |
|          |      |      |      |         |

DESIGNED BY: C. MONTGOMERY  
 DRAWN BY: C. SCOTT  
 SHEET CHECKED BY: X  
 CROSS CHECKED BY: X  
 APPROVED BY: X  
 DATE: JANUARY 2015



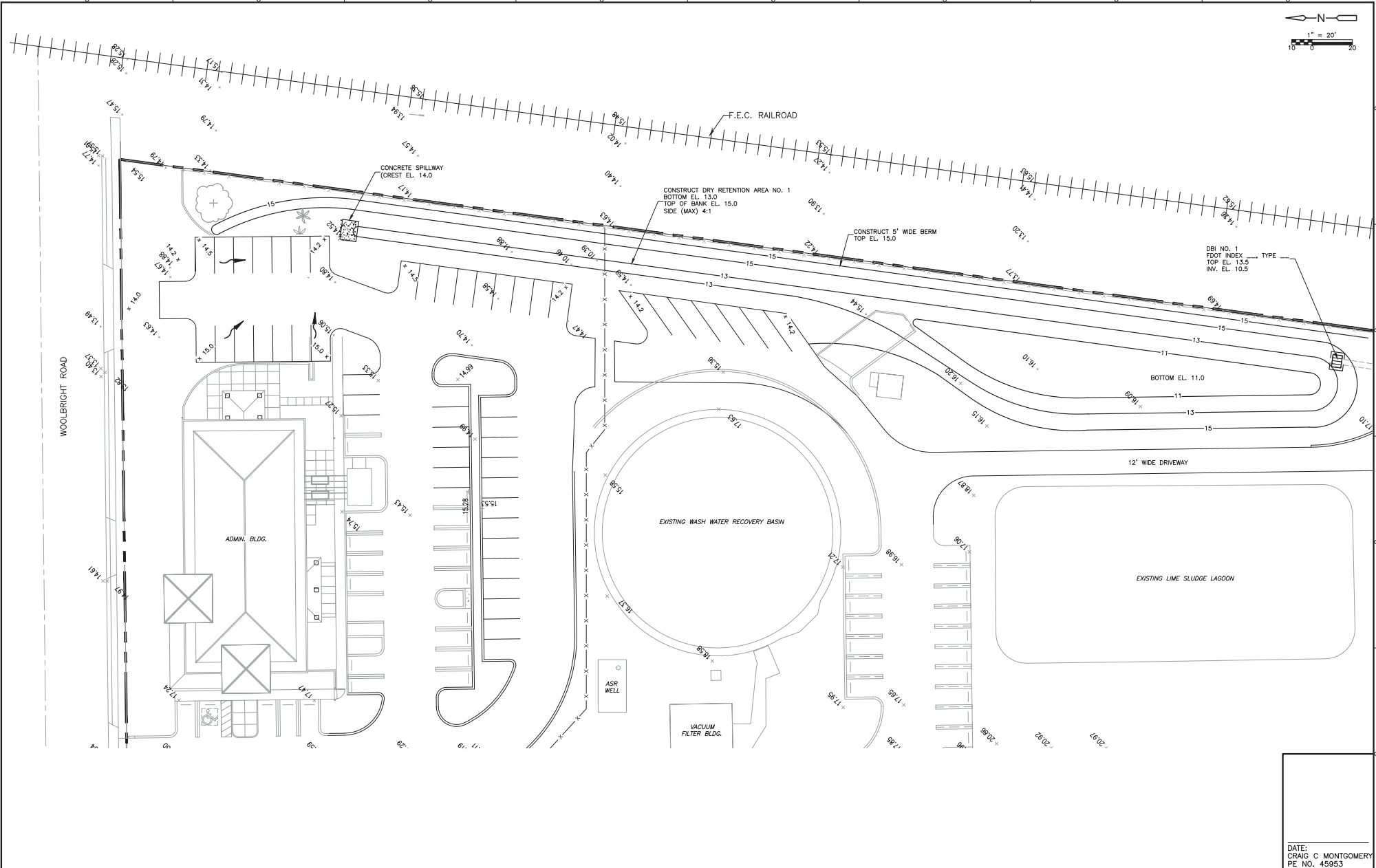
CITY OF BOYNTON BEACH  
 UTILITIES DEPARTMENT  
**BOYNTON BEACH**  
**EAST WATER TREATMENT PLANT**

**YARD PIPING PLAN - SOUTHWEST**

DATE: CRAIG C MONTGOMERY  
 PE NO. 45953  
 PROJECT NO. 5000-104280  
 FILE NAME: C0009PPL.DWG  
 SHEET NO.  
**C-9**

SITE PLAN REVIEW

XREF: [CONG. FILE: C:\PROJECTS\_CSPROJEST\_1\csp\110 CAD\DOT\PGDP.dwg] [insert: ]  
 Last saved by: AUSTJD - Time: 2/10/2015 8:58:32 AM  
 File: V:\pwworkspace\PPW\JWA\3000\104286\04 Design Services ML\_2012\02 CH\10 CAD\DOT\PGDP.dwg  
 REUSE OF DOCUMENTS: THESE DOCUMENTS AND DESIGNS PROVIDED BY PROFESSIONAL SERVICE, INCORPORATED HEREIN, ARE THE PROPERTY OF CDM SMITH AND ARE NOT TO BE USED, IN WHOLE OR PART, FOR ANY OTHER PROJECT WITHOUT THE WRITTEN AUTHORIZATION OF CDM SMITH.



| REV. NO. | DATE | DRWN | CHKD | REMARKS |
|----------|------|------|------|---------|
|          |      |      |      |         |
|          |      |      |      |         |
|          |      |      |      |         |
|          |      |      |      |         |

DESIGNED BY: C. MONTGOMERY  
 DRAWN BY: C. SCOTT  
 SHEET CHECKED BY: X  
 CROSS CHECK BY: X  
 APPROVED BY: X  
 DATE: JANUARY 2015

1601 Brevard Road, Suite 400 East  
 West Palm Beach, FL 33410  
 Tel: 561 889 3336  
 FL CCR# No. EB-0000200

CITY OF BOYNTON BEACH  
 UTILITIES DEPARTMENT  
**BOYNTON BEACH**  
**EAST WATER TREATMENT PLANT**

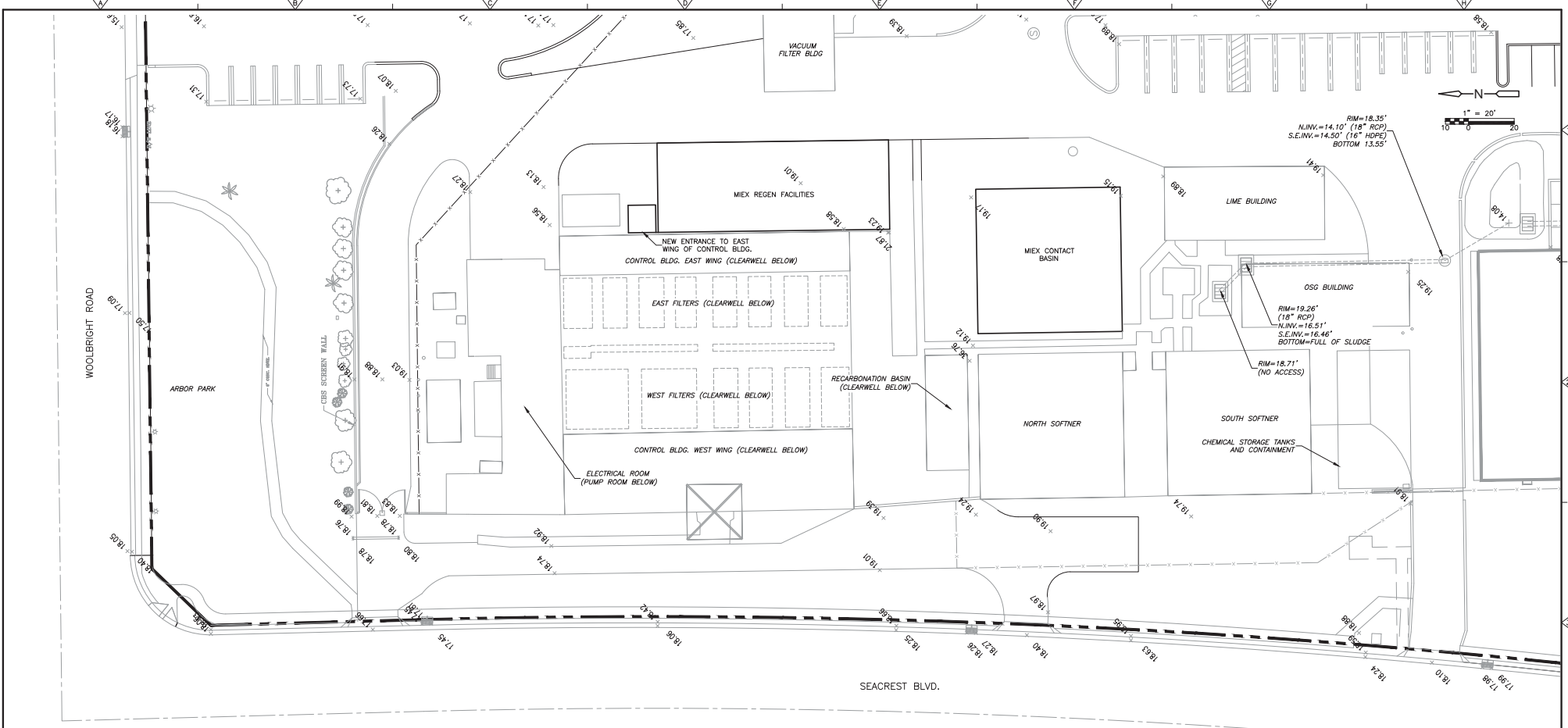
**PAVING, GRADING AND  
 DRAINAGE PLAN - NORTHEAST**

|   |
|---|
| DATE:<br>CRAIG C MONTGOMERY<br>PE NO. 45953                                     |
| PROJECT NO. 5000-104280<br>FILE NAME: C0110PGDP.DWG<br>SHEET NO.<br><b>C-10</b> |

SITE PLAN REVIEW



XREF: [C:\MSW\STATE\_CAD\PROJECT\_CSD00157] Insert: [ ]  
 Last saved by: 2007MC Time: 1/13/2015 1:50:43 PM  
 File: \\server\pp\PPW\JMH\3000\10426\04 Design Services ML\_2015\02 CH\10 CAD\01\PPDP.dwg  
 REUSE OF DOCUMENTS: THESE DOCUMENTS AND DESIGNS PROVIDED BY PROFESSIONAL SERVICE, INCORPORATED HEREIN ARE THE PROPERTY OF CDM SMITH AND ARE NOT TO BE USED, IN WHOLE OR PART, FOR ANY OTHER PROJECT WITHOUT THE WRITTEN AUTHORIZATION OF CDM SMITH.



| REV. NO. | DATE | DRWN | CHKD | REMARKS |
|----------|------|------|------|---------|
|          |      |      |      |         |
|          |      |      |      |         |
|          |      |      |      |         |

DESIGNED BY: C. MONTGOMERY  
 DRAWN BY: C. SCOTT  
 SHEET CHECKED BY: X  
 CROSS CHECKED BY: X  
 APPROVED BY: X  
 DATE: JANUARY 2015

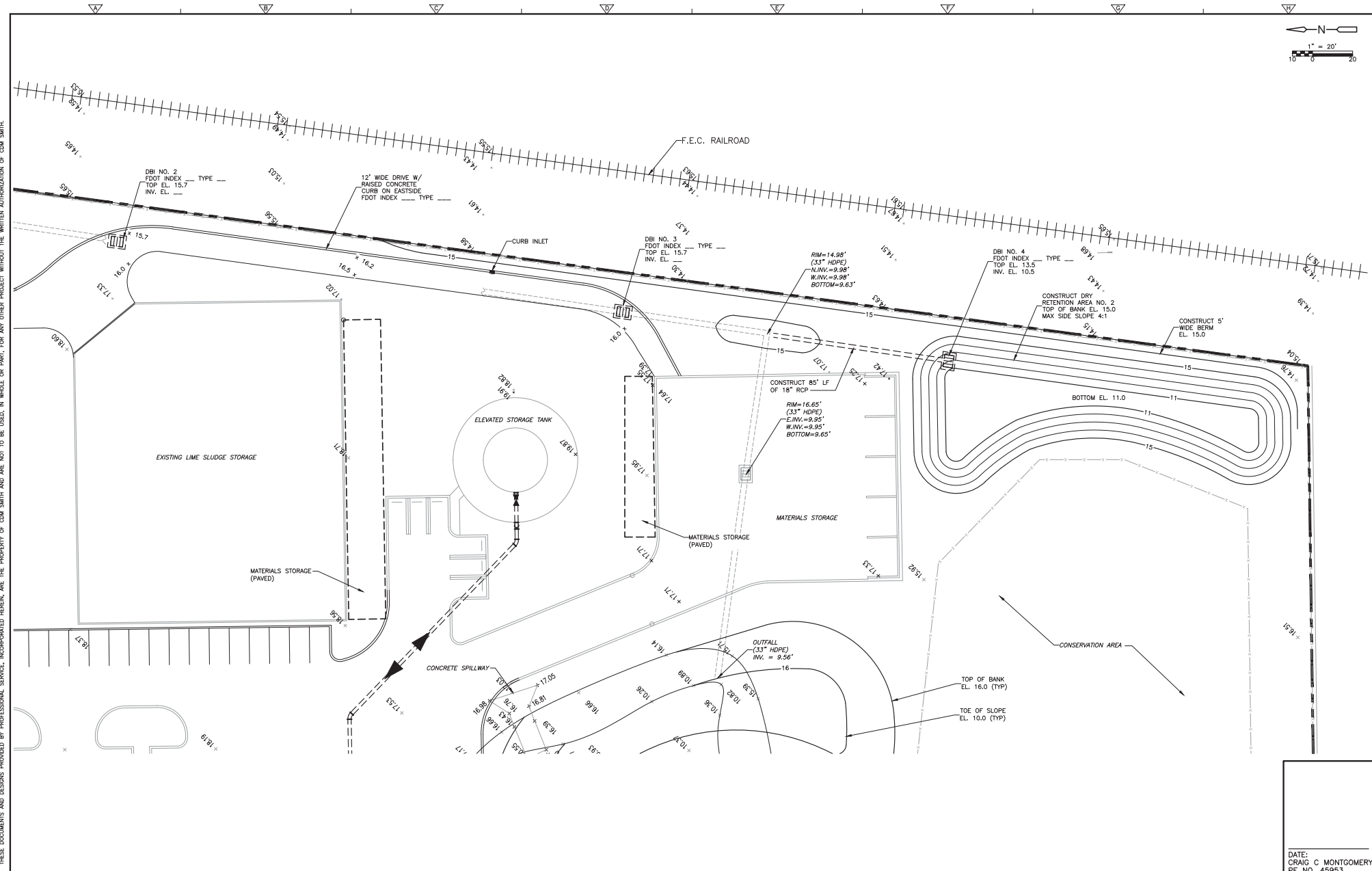
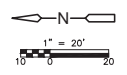


CITY OF BOYNTON BEACH  
 UTILITIES DEPARTMENT  
**BOYNTON BEACH**  
 EAST WATER TREATMENT PLANT

PAVING, GRADING AND  
 DRAINAGE PLAN - NORTHWEST

DATE: CRAIG C MONTGOMERY  
 PE NO. 45953  
 PROJECT NO. 5000-104260  
 FILE NAME: C011PPDP.DWG  
 SHEET NO. C-11

SITE PLAN REVIEW



XREF: [C:\MS\PLANS\CDM\PROJECTS\052001517\1042.dwg] (last saved by: 2/2/2015 11:50:55 AM)  
 User: jmcgovern@cdm.com  
 Project: BOYNTON BEACH EAST WATER TREATMENT PLANT - PAVING, GRADING AND DRAINAGE PLAN - NORTHEAST  
 THESE DOCUMENTS AND DESIGNS PROVIDED BY PROFESSIONAL SERVICE, INCORPORATED. HEREIN ARE THE PROPERTY OF CDM SMITH AND ARE NOT TO BE USED, IN WHOLE OR PART, FOR ANY OTHER PROJECT WITHOUT THE WRITTEN AUTHORIZATION OF CDM SMITH.

| REV. NO. | DATE | DRWN | CHKD | REMARKS |
|----------|------|------|------|---------|
|          |      |      |      |         |
|          |      |      |      |         |
|          |      |      |      |         |

DESIGNED BY: C. MONTGOMERY  
 DRAWN BY: C. SCOTT  
 SHEET CHECKED BY: X  
 CROSS CHECKED BY: X  
 APPROVED BY: X  
 DATE: JANUARY 2015

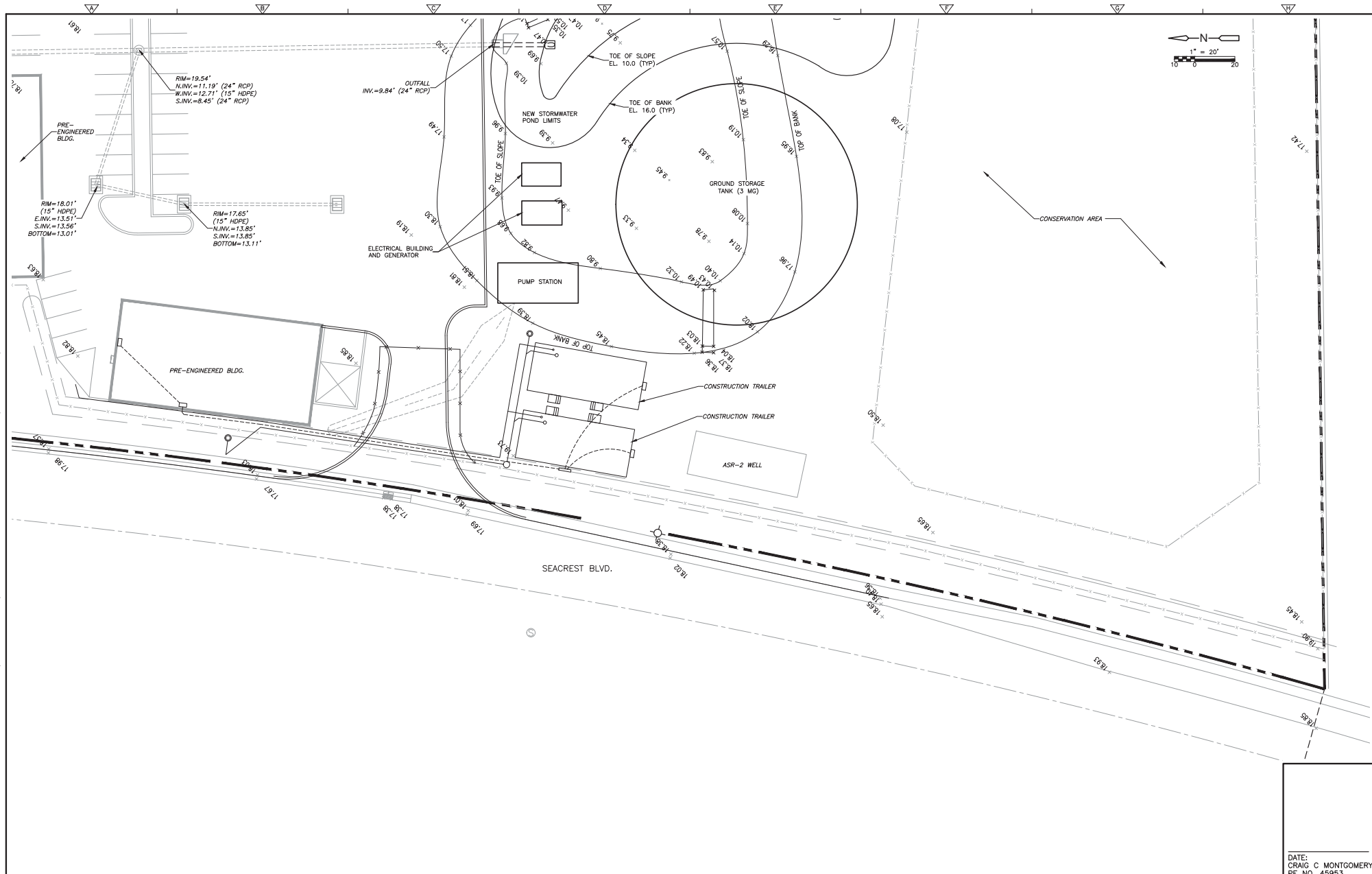


CITY OF BOYNTON BEACH  
 UTILITIES DEPARTMENT  
**BOYNTON BEACH**  
 EAST WATER TREATMENT PLANT

PAVING, GRADING AND  
 DRAINAGE PLAN - NORTHEAST

DATE: CRAIG C MONTGOMERY  
 PE NO. 45953  
 PROJECT NO. 5000-104280  
 FILE NAME: C012FGDF.DWG  
 SHEET NO.  
**C-12**  
 SITE PLAN REVIEW

XREF: [C:\G:\PLANS\_CAD\PROJECT\_C5000157] Insert: [ ]  
 Last saved by: 2007MTC Time: 2/6/2015 11:40:06 AM  
 path: \\server\pwworkspace\jmw\30001\04285\04 Design Services\ML\_S01\02 CH\10 CAD\01\PROP.DWG  
 REUSE OF DOCUMENTS: THESE DOCUMENTS AND DESIGNS PROVIDED BY PROFESSIONAL SERVICE, INCORPORATED. HEREIN ARE THE PROPERTY OF CDM SMITH AND ARE NOT TO BE USED, IN WHOLE OR PART, FOR ANY OTHER PROJECT WITHOUT THE WRITTEN AUTHORIZATION OF CDM SMITH.



| REV. NO. | DATE | DRWN | CHKD | REMARKS |
|----------|------|------|------|---------|
|          |      |      |      |         |
|          |      |      |      |         |
|          |      |      |      |         |

DESIGNED BY: C. MONTGOMERY  
 DRAWN BY: C. SCOTT  
 SHEET CHECKED BY: X  
 CROSS CHECKED BY: X  
 APPROVED BY: X  
 DATE: JANUARY 2015

**CDM Smith**  
 1601 Blandford Road, Suite 400 East  
 West Palm Beach, FL 33409  
 Tel: 561 889 3336  
 FL CCR# No. EB-0000030

CITY OF BOYNTON BEACH  
 UTILITIES DEPARTMENT  
**BOYNTON BEACH**  
**EAST WATER TREATMENT PLANT**

PAVING, GRADING AND  
 DRAINAGE PLAN - SOUTHWEST

DATE: CRAIG C MONTGOMERY  
 PE NO. 45953  
 PROJECT NO. 5000-104280  
 FILE NAME: C013FGDP.DWG  
 SHEET NO.  
**C-13**