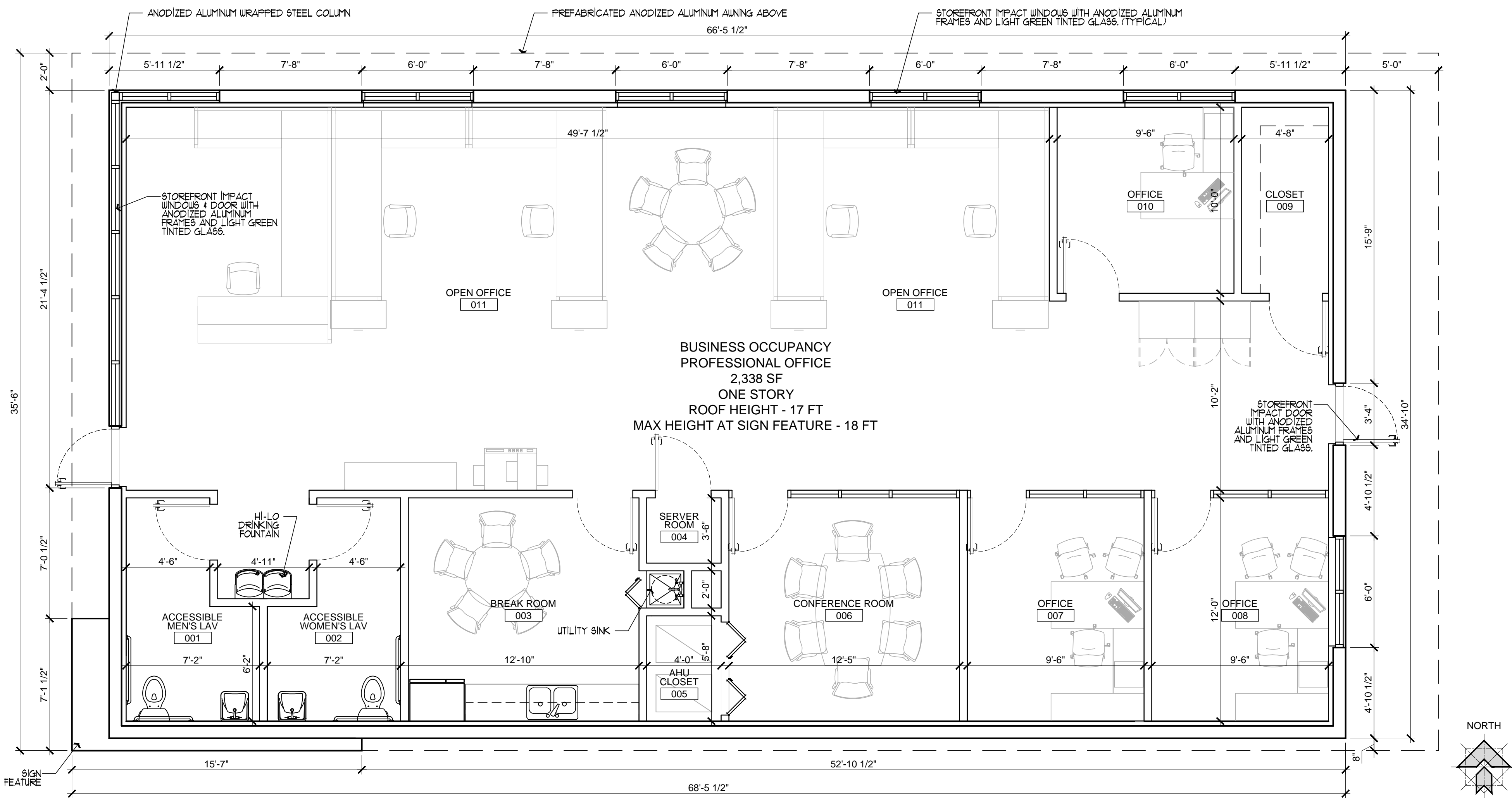
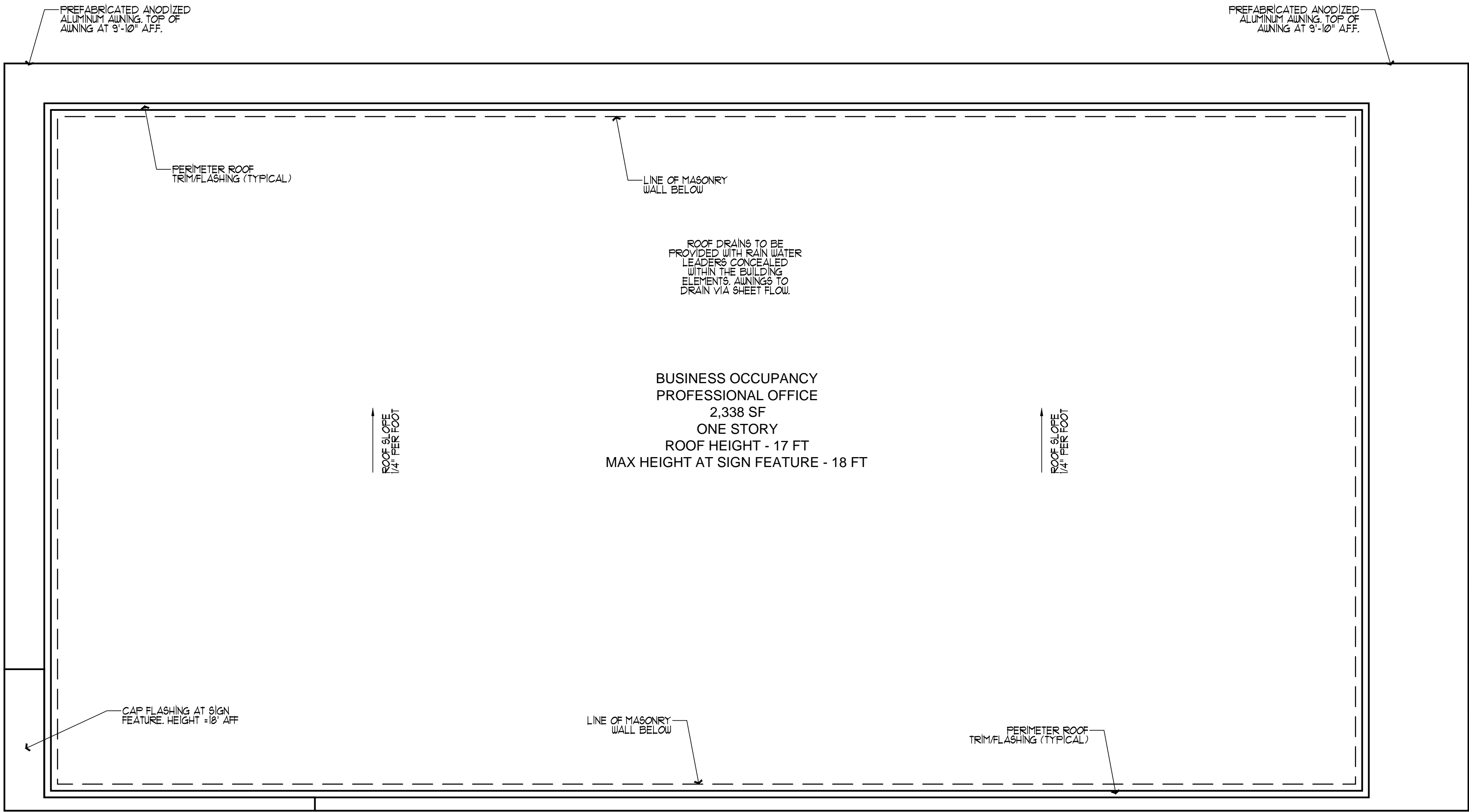


S:\01_Projects\2016\16.093_Nurse_1_BB\16.093_Drawings\16.093_CD_CAD\16.093_Nurse1_Boynnton_Site Plan Approval_CD_R2.dwg
mberg
3/7/2017 10:24:12 AM



FLOOR PLAN 1
SCALE: 1/4" = 1'-0"



ROOF PLAN 2
SCALE: 1/4" = 1'-0"

PROJECT INFORMATION

CONSTRUCTION TYPE TYPE IIB - UNPROTECTED
OCCUPANCY TYPE GROUP B BUSINESS

FLOOR PLAN GENERAL NOTES

1. EXTERIOR WALL OPENINGS SHALL COMPLY WITH THE 2014 FBC, TABLE 105.8
2. EXTERIOR WALL CONSTRUCTION SHALL COMPLY WITH THE 2014 FBC, TABLE 602.
3. BUILDINGS, STRUCTURES AND PARTS THEREOF SHALL BE DESIGNED TO WITHSTAND THE MINIMUM WIND LOADS OF 110 MPH WIND FORCES ON EVERY BUILDING OR STRUCTURE SHALL BE DETERMINED BY THE PROVISIONS OF ASCE 7 AND THE PROVISIONS OF 2014 FBC, SECTION 1609 (WIND LOADS).
4. EXTERIOR WALL OPENINGS SHALL COMPLY WITH THE 2014 FBC, TABLE 105.8

WALL AREA CALCULATIONS:

SOUTH FACADE

- AREA: 1179 SF
- UNPROTECTED OPENINGS: 0 SF
- PERCENTAGE OF UNPROTECTED OPENINGS: 0%

NORTH FACADE

- AREA: 1130 SF
- UNPROTECTED OPENINGS: 194 SF
- PERCENTAGE OF UNPROTECTED OPENINGS: 17%

WEST FACADE

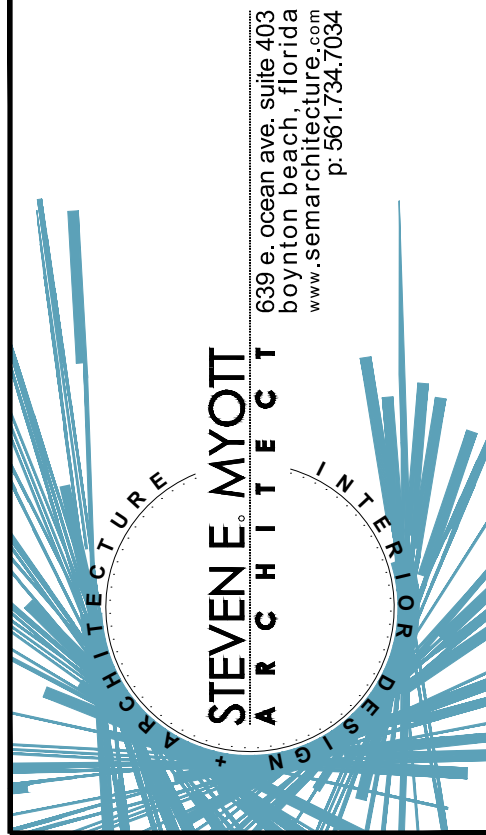
- AREA: 611 SF
- UNPROTECTED OPENINGS: 183 SF
- PERCENTAGE OF UNPROTECTED OPENINGS: 30%

EAST FACADE

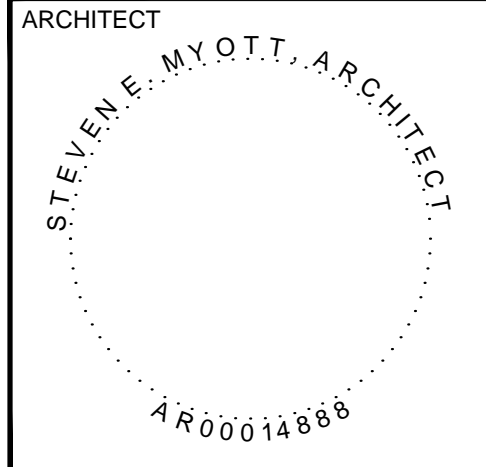
- AREA: 530 SF
- UNPROTECTED OPENINGS: 66 SF
- PERCENTAGE OF UNPROTECTED OPENINGS: 1%

SECURITY GENERAL NOTES

1. PRIOR TO ISSUANCE OF THE BUILDING PERMIT, THE APPLICANT SHALL PREPARE A CONSTRUCTION SITE SECURITY AND MANAGEMENT PLAN FOR APPROVAL BY THE CITY'S POLICE DEPARTMENT CPTD OFFICIAL.
2. SECURITY MEASURES AT A CONSTRUCTION SITE ARE DETERMINED AFTER A SECURITY SURVEY IS CONDUCTED USING THE FOLLOWING PROCEDURES: A STAGING AREA TO STORE EQUIPMENT AND PARK MACHINERY MUST BE FENCED. THE STAGING AREA MUST BE VISIBLE FROM AN ACCESSIBLE ROADWAY TO ALLOW EFFECTIVE POLICE PATROL. LIGHTING MUST BE PROVIDED TO ALLOW COMPLETE VISIBILITY TO THE AREA. APPROVED PADLOCK FOR ALL STORAGE TRAILERS AND EQUIPMENT TRAILERS AND PARK WITHIN STAGING AREA.
3. ALL PERIMETER DOORS SHOULD BE EQUIPPED WITH REINFORCED, CASE HARDENED STRIKE PLATE, WITH LOCKS AND ALARM SYSTEM.
4. FOR POTENTIAL CRIMINAL ACTIVITY DETECTION, A HIGH RESOLUTION COLOR DIGITAL VIDEO SYSTEM CONSISTING OF A MINIMUM OF LOW LUX CAMERAS, WITH MONITORING AND PHOTO PROCESSING PICTURE OR VIDEO PRINTOUT CAPABILITIES SHALL BE INSTALLED.



NURSE 1
- SITE PLAN APPROVAL -
SE 3RD ST
BOYNTON BEACH, FLORIDA



ALL DRAWINGS AND WRITTEN MATERIAL APPEARING HEREIN CONSTITUTE ORIGINAL AND UNPUBLISHED WORK OF THE ARCHITECT AND MAY NOT BE USED, DUPLICATED OR DISCLOSED IN ANY FORM WITHOUT THE EXPRESSED WRITTEN CONSENT OF THE ARCHITECT

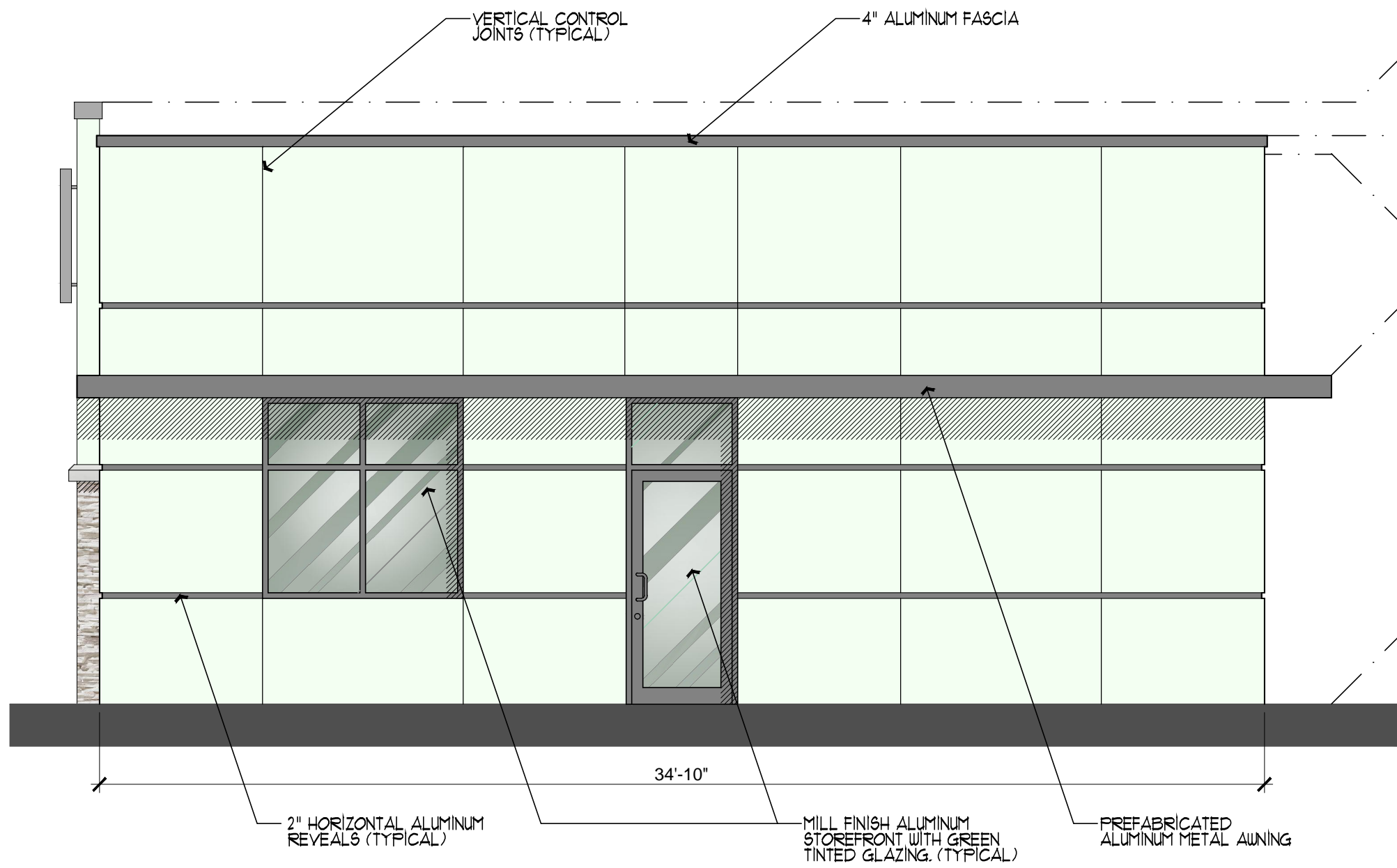
PROJECT NO: 16.093
DRAWN BY: YB
CHECKED BY: SM

NO. DATE: ISSUED FOR:
1 02/04/2016 SITE PLAN APPROVAL
2 02/13/2017 SITE PLAN COMMENTS

FLOOR PLAN
ROOF PLAN

A-1

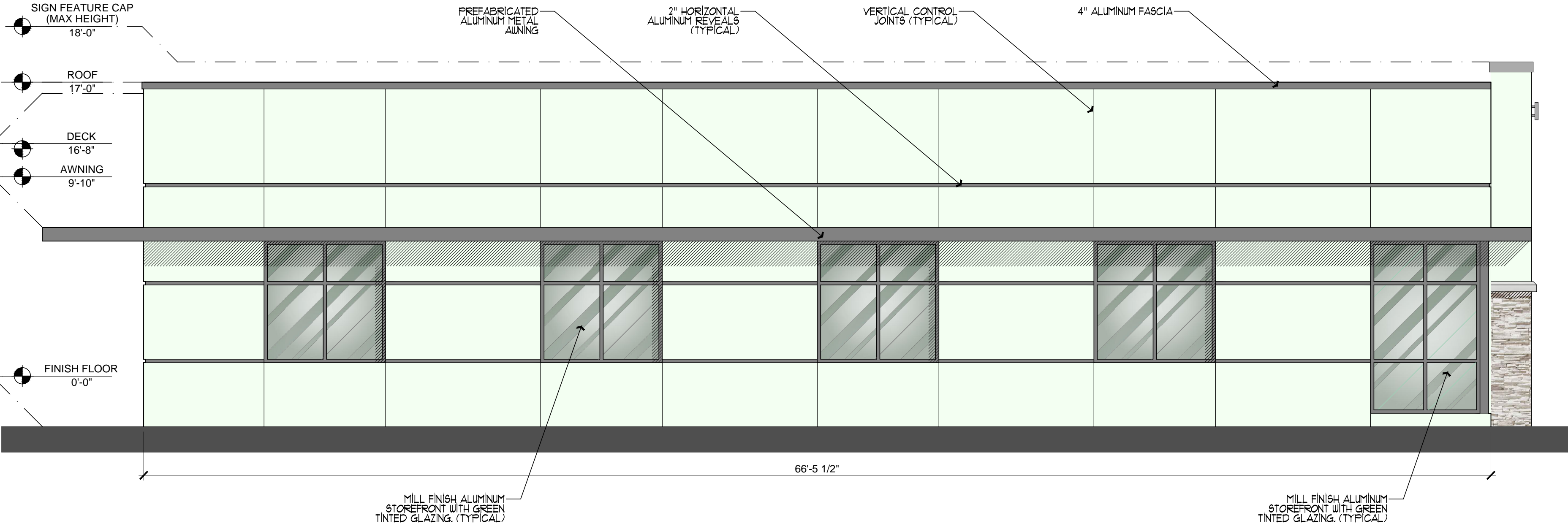
TYPICAL WALL FINISH:
1. SMOOTH STUCCO
2. PAINTED BENJAMIN MOORE OC-68 DISTANT GRAY



EAST ELEVATION
SCALE: 1/4" = 1'-0"

1

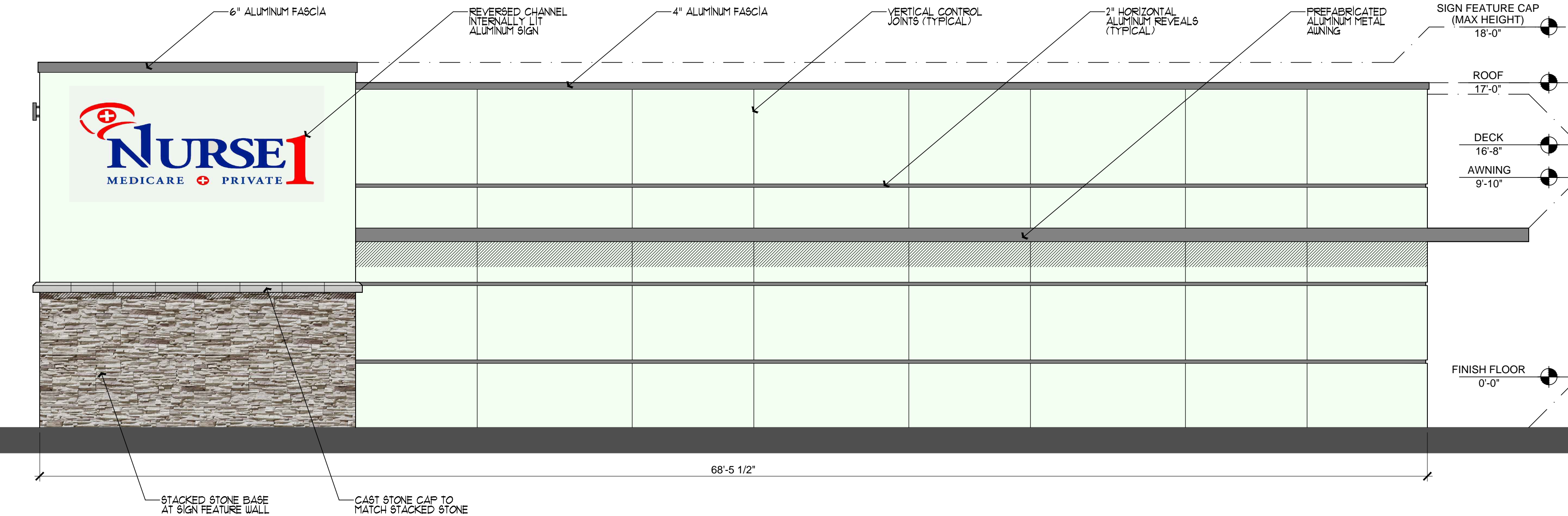
TYPICAL WALL FINISH:
1. SMOOTH STUCCO
2. PAINTED BENJAMIN MOORE OC-68 DISTANT GRAY



NORTH ELEVATION
SCALE: 1/4" = 1'-0"

2

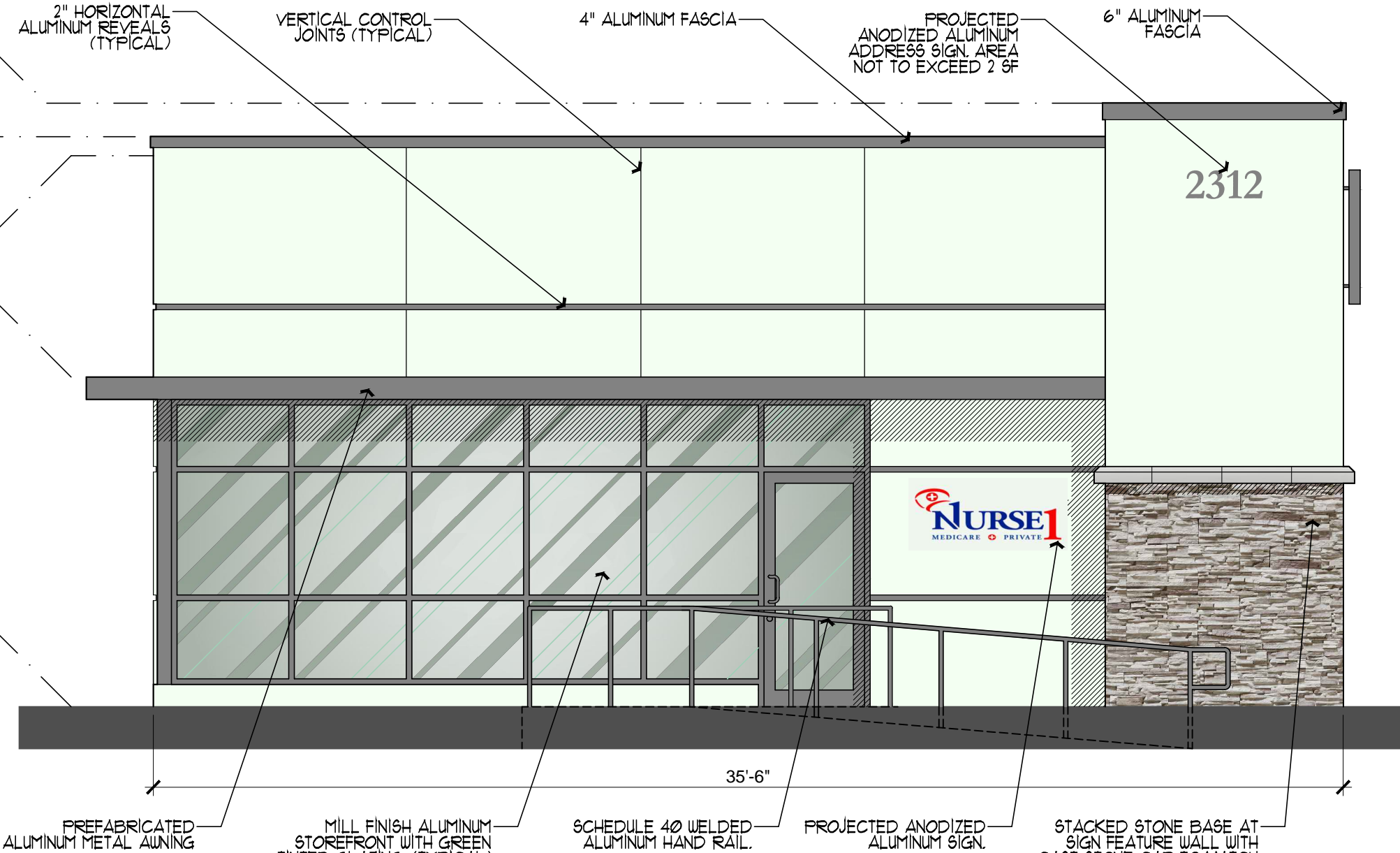
TYPICAL WALL FINISH:
1. SMOOTH STUCCO
2. PAINTED BENJAMIN MOORE OC-68 DISTANT GRAY



SOUTH ELEVATION
SCALE: 1/4" = 1'-0"

3

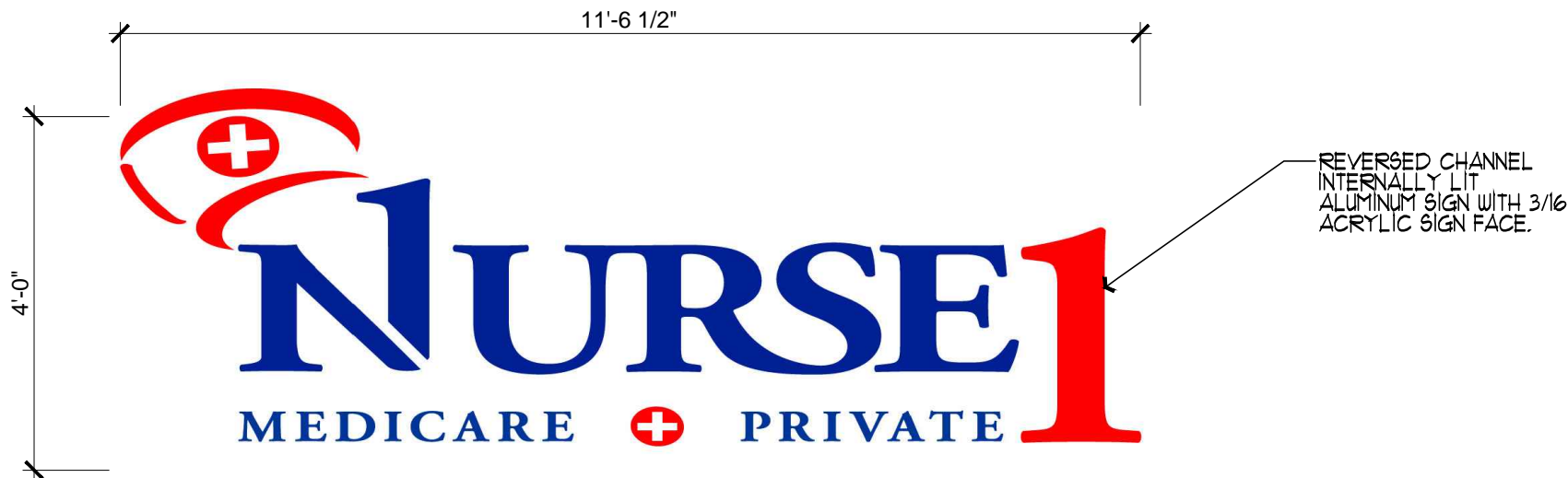
TYPICAL WALL FINISH:
1. SMOOTH STUCCO
2. PAINTED BENJAMIN MOORE OC-68 DISTANT GRAY



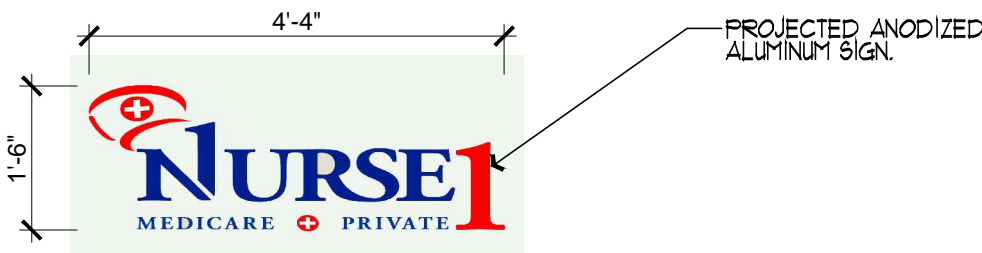
WEST ELEVATION
SCALE: 1/4" = 1'-0"

4

SOUTH ELEVATION SIGN
SCALE: 1/4" = 1'-0"



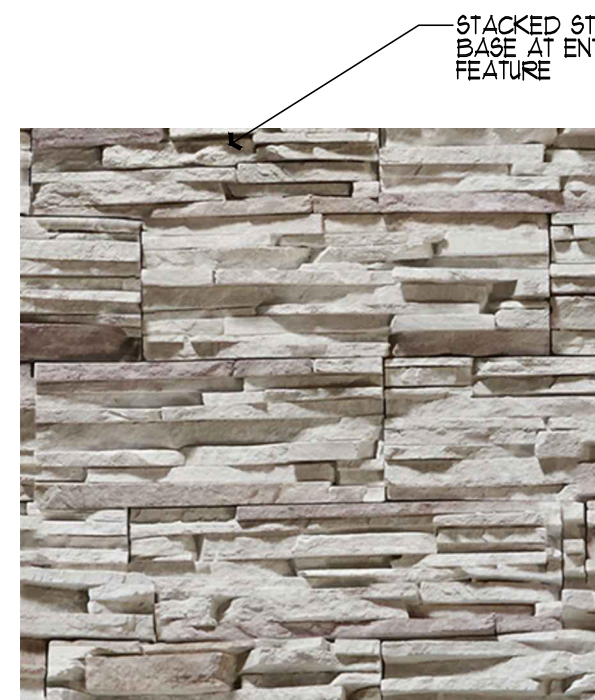
WEST ELEVATION SIGN
SCALE: 1/4" = 1'-0"



- NOTES:
1. MAXIMUM NUMBER OF SIGNS = 2
 2. MAXIMUM SIGN AREA: (46.17SF + 6.49SF = 52.66 SF)
ALLOWABLE AREA: (35.5' BUILDING FRONTAGE x 1.5 = 53.25SF)
 3. PLACED ON BUILDING WALL
 4. SIGN COLORS: MAXIMUM OF 3 COLORS: BLUE, RED & WHITE
 5. TRADEMARK LOGO: MAXIMUM 20% OF SIGN
 6. FONT: GARAMOND PREMIER PRO
 7. ILLUMINATION: SIGN WILL NOT BE ILLUMINATED AFTER NORMAL BUSINESS HOURS

WALL SIGN DETAILS
SCALE: 1/2" = 1'-0"

5



STONE FINISH DETAIL
SCALE: 1" = 1'-0"

6

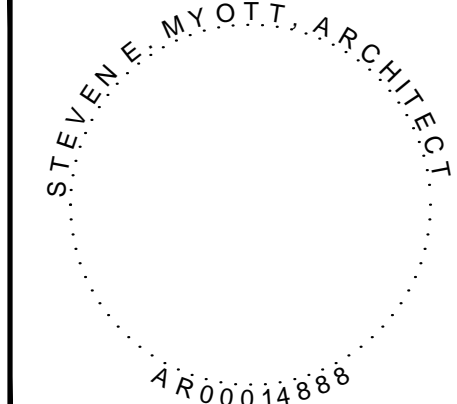
ELEVATION GENERAL NOTES

1. EXTERIOR WALL OPENINGS SHALL COMPLY WITH THE 2014 FBC, TABLE 1005.3
 2. EXTERIOR WALL CONSTRUCTION SHALL COMPLY WITH THE 2014 FBC, TABLE 602.
 3. BUILDINGS, STRUCTURES AND PARTS THEREOF SHALL BE DESIGNED TO WITHSTAND THE MINIMUM WIND LOADS OF 120 MPH WIND FORCES ON EVERY BUILDING OR STRUCTURE SHALL BE DETERMINED BY THE PROVISIONS OF ASCE 7 AND THE PROVISIONS OF 2014 FBC, SECTION 1609 (WIND LOADS).
 4. EXTERIOR WALL OPENINGS SHALL COMPLY WITH THE 2014 FBC, TABLE 1005.3
- WALL AREA CALCULATIONS:**
- SOUTH FACADE**
- AREA: 1179 SF
 - UNPROTECTED OPENINGS: 0 SF
 - PERCENTAGE OF UNPROTECTED OPENINGS: 0%
- NORTH FACADE**
- AREA: 1130 SF
 - UNPROTECTED OPENINGS: 134 SF
 - PERCENTAGE OF UNPROTECTED OPENINGS: 11%
- WEST FACADE**
- AREA: 611 SF
 - UNPROTECTED OPENINGS: 103 SF
 - PERCENTAGE OF UNPROTECTED OPENINGS: 30%
- EAST FACADE**
- AREA: 530 SF
 - UNPROTECTED OPENINGS: 66 SF
 - PERCENTAGE OF UNPROTECTED OPENINGS: 11%

NURSE 1
- SITE PLAN APPROVAL -

SE 3RD ST
BOYNTON BEACH, FLORIDA

ARCHITECT



ALL DRAWINGS AND WRITTEN MATERIAL APPEARING HEREIN CONSTITUTE ORIGINAL AND UNPUBLISHED WORK OF THE ARCHITECT AND MAY NOT BE USED, DUPLICATED OR DISCLOSED IN ANY FORM WITHOUT THE EXPRESSED WRITTEN CONSENT OF THE ARCHITECT

PROJECT NO: 16-093
DRAWN BY: JMB
CHECKED BY: SM

NO. DATE: ISSUED FOR:
1 01/04/2016 SITE PLAN APPROVAL
2 02/13/2017 SITE PLAN COMMENTS

ELEVATIONS

**SIGN
DETAIL**

**STONE
DETAIL**

A-2