

**COLOR & MATERIAL KEY NOTES**

- 1 WOOD: PRODEMA - PRODEX NUX
- 2 ACM: PURE WHITE - COLORWELD 500 (REYNOBOND)
- 3 ACM: BRIGHT SILVER MET. - COLORWELD 500XL (REYNOBOND)
- 4 ACM: ORANGE ORANGE - COLORWELD 300 (REYNOBOND)
- 5 GLASS: GUARDIAN CLEAR FLOAT GLASS
- 6 PAINT: BENJAMIN MOORE WHITE - 01
- 7 PAINT: SHERWIN WILLIAMS FUNCTIONAL GREY 7024
- 8 PAINT: SHERWIN WILLIAMS PEPPERCORN 7674
- 9 GREEN WALL
- 10 WOOD TRELLIS: COMPOSITE WOOD SLATS BY TRUGRAIN
- 11 HORIZONTAL WALL FINIS: COMPOSITE WOOD SLATS BY TRUGRAIN

**FSMY**  
 ARCHITECTS • PLANNERS  
 FALKANGER SNYDER MARTINEAU & YATES

888 SOUTH ANDREWS AVE. SUITE 300  
 FORT LAUDERDALE, FLORIDA 33316  
 PH: (954)764-6575 FAX: (954)764-8622

**JEFF FALKANGER, DOUG SNYDER  
 LARRY MARTINEAU, JIRO YATES**

COPYRIGHT 2012  
 FALKANGER, SNYDER, MARTINEAU & YATES ALL RIGHTS  
 RESERVED. THIS DOCUMENT OR PARTS THEREOF MAY NOT  
 BE REPRODUCED IN ANY FORM WITHOUT PERMISSION.

CA # AAC000447

DESIGNED	DRAWN	CHECKED
NB	NB, J.J. CR	JY

Exhibit B: Elevations



**2 EAST ELEVATION**  
 1/16" = 1'-0"



**1 WEST ELEVATION**  
 1/16" = 1'-0"

REVISIONS

DATE:	COMM:
11.06.15	15004

**RIVERWALK PLAZA**

1608 SOUTH FEDERAL HIGHWAY  
 BOYNTON BEACH, FLORIDA 33425

EXTERIOR ELEVATIONS - EAST AND WEST  
 DRC

AS-201

11/3/2016 9:57:30 AM



**COLOR & MATERIAL KEY NOTES**

- 1 WOOD: PRODEMA - PRODEX NUX
- 2 ACM: PURE WHITE - COLORWELD 500 (REYNOBOND)
- 3 ACM: BRIGHT SILVER MET. - COLORWELD 500XL (REYNOBOND)
- 4 ACM: ORANGE ORANGE - COLORWELD 300 (REYNOBOND)
- 5 GLASS: GUARDIAN CLEAR FLOAT GLASS
- 6 PAINT: BENJAMIN MOORE WHITE - 01
- 7 PAINT: SHERWIN WILLIAMS FUNCTIONAL GREY 7024
- 8 PAINT: SHERWIN WILLIAMS PEPPERCORN 7674
- 9 GREEN WALL
- 10 WOOD TRELLIS: COMPOSITE WOOD SLATS BY TRUGRAIN
- 11 HORIZONTAL WALL FINIS: COMPOSITE WOOD SLATS BY TRUGRAIN

**FSMY**  
ARCHITECTS • PLANNERS  
FALKANGER SNYDER MARTINEAU & YATES

888 SOUTH ANDREWS AVE. SUITE 300  
FORT LAUDERDALE, FLORIDA 33316  
PH: (954)764-6575 FAX: (954)764-8622

**JEFF FALKANGER, DOUG SNYDER  
LARRY MARTINEAU, JIRO YATES**

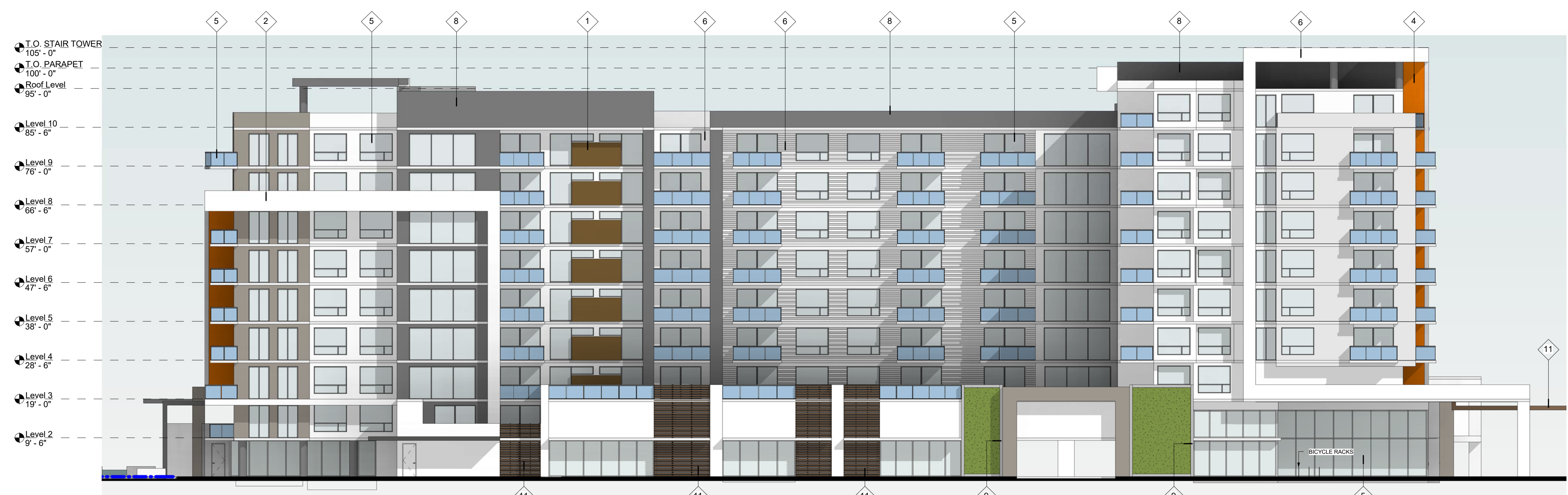
COPYRIGHT 2012  
FALKANGER, SNYDER, MARTINEAU & YATES ALL RIGHTS RESERVED. THIS DOCUMENT OR PARTS THEREOF MAY NOT BE REPRODUCED IN ANY FORM WITHOUT PERMISSION.

CA # AAC000447

DESIGNED	DRAWN	CHECKED
NB	NB, J.J. CR	JY



**2 SOUTH ELEVATION**  
AS-202 1/16" = 1'-0"



**1 NORTH ELEVATION**  
AS-202 1/16" = 1'-0"

Exhibit B: Elevations

REVISIONS

DATE:	COMM:
11.06.15	15004

**RIVERWALK PLAZA**

1608 SOUTH FEDERAL HIGHWAY  
BOYNTON BEACH, FLORIDA 33425

EXTERIOR ELEVATIONS - NORTH AND SOUTH  
DRC

AS-202

11/3/2016 9:57:49 AM



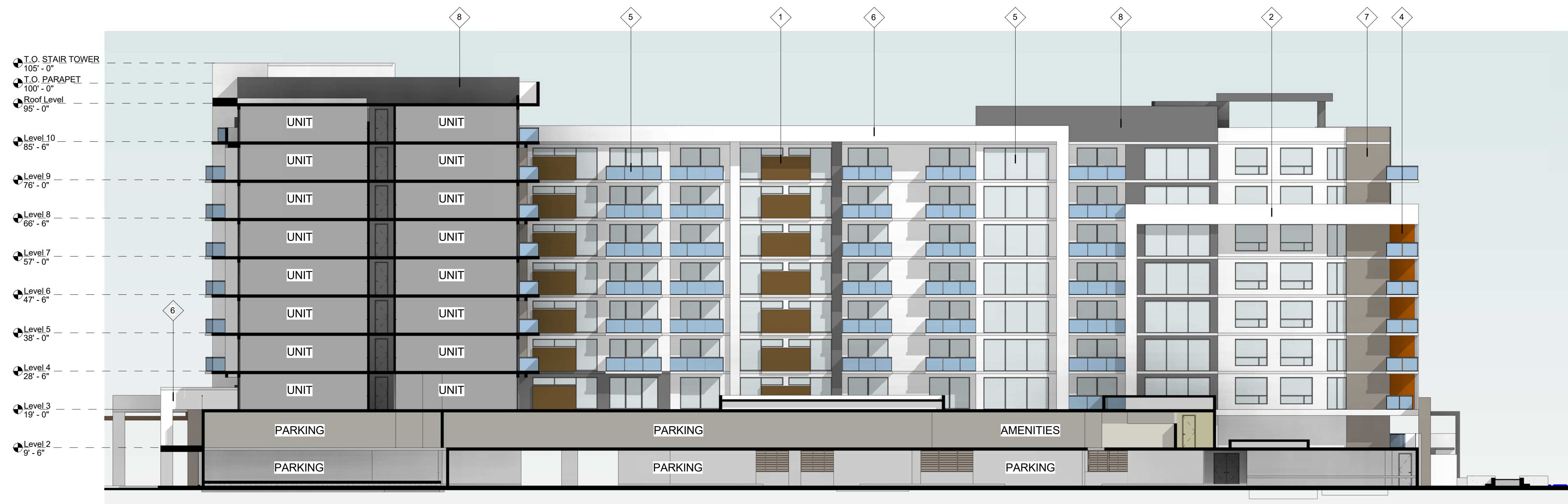
**COLOR & MATERIAL KEY NOTES**

- 1 WOOD: PRODEMA - PRODEX NUX
- 2 ACM: PURE WHITE - COLORWELD 500 (REYNOBOND)
- 3 ACM: BRIGHT SILVER MET. - COLORWELD 500XL (REYNOBOND)
- 4 ACM: ORANGE ORANGE - COLORWELD 300 (REYNOBOND)
- 5 GLASS: GUARDIAN CLEAR FLOAT GLASS
- 6 PAINT: BENJAMIN MOORE WHITE - 01
- 7 PAINT: SHERWIN WILLIAMS FUNCTIONAL GREY 7024
- 8 PAINT: SHERWIN WILLIAMS PEPPERCORN 7674
- 9 GREEN WALL
- 10 WOOD TRELLIS: COMPOSITE WOOD SLATS BY TRUGRAIN
- 11 HORIZONTAL WALL FINIS: COMPOSITE WOOD SLATS BY TRUGRAIN

DESIGNED	DRAWN	CHECKED
NB	NB, J.J. CR	JY



**2 NORTH SECTION/ELEVATION - TOWER C**  
AS-203 1/16" = 1'-0"



**1 SOUTH SECTION/ELEVATION - TOWER B**  
AS-203 1/16" = 1'-0"

Exhibit B: Elevations

REVISIONS

DATE:	COMM:
11.06.15	15004

RIVERWALK PLAZA

1608 SOUTH FEDERAL HIGHWAY  
BOYNTON BEACH, FLORIDA 33425

EXTERIOR ELEVATIONS - BUILDING B & C  
POOL DECK ELEVATIONS  
DRC

11/3/2016 9:56:07 AM