

1
2
3
4
5
6
7
8
9
10
11
12
13
14
15
16
17
18
19
20
21
22
23
24
25
26
27
28
29
30
31
32
33
34
35
36
37
38
39
40
41
42
43
44

RESOLUTION R21- _____

A RESOLUTION OF THE CITY OF BOYNTON BEACH, FLORIDA, RELATING TO THE PROVISION OF CANAL MAINTENANCE SERVICES IN THE CITY OF BOYNTON BEACH, FLORIDA; PROVIDING FOR PURPOSE AND DEFINITIONS; PROVIDING FOR LEGISLATIVE DETERMINATIONS; ESTABLISHING THE ESTIMATED RATE FOR THE CANAL MAINTENANCE SERVICES SPECIAL ASSESSMENTS FOR THE FISCAL YEAR BEGINNING OCTOBER 1, 2021; DIRECTING THE PREPARATION OF A CANAL MAINTENANCE SERVICES SPECIAL ASSESSMENT ROLL; AUTHORIZING A PUBLIC HEARING AND DIRECTING THE PROVISION OF NOTICE THEREOF; AND PROVIDING AN EFFECTIVE DATE.

WHEREAS, City of Boynton Beach Ordinance No. 21-011, adopted on April 20, 2021, provides for the home rule authority of the City to impose Canal Maintenance Services Special Assessments against property located within the City that receive Canal Maintenance Services from the City, and provides findings of special benefit to real property as a result of such services; and,

WHEREAS, the City believes it is in the best interests of the property owners of properties receiving Canal Maintenance Services provided by the City to collect funds for the costs of such services through the levy and collection of a special assessment, as such will permit the payment for the services and ensure that all properties that receive Canal Maintenance Services from the City pay for such; and,

WHEREAS, Canal Maintenance Services provided by the City as defined hereinafter provide the requisite special benefit to Assessed Property such that they may be funded through a special assessment; and,

WHEREAS, City Administration has reviewed the budget for Canal Maintenance Services to ensure that the Canal Maintenance Services Special Assessment meets the legal requirements for special benefit and fair apportionment; and,

WHEREAS, the City Commission determines that it is fair and equitable to levy and collect a non-ad valorem special assessment to fund the Canal Maintenance Services provided by the City through its Contract, consistent with the methodology and allocation as provided hereinafter.

NOW, THEREFORE, BE IT RESOLVED BY THE CITY COMMISSION OF THE CITY OF BOYNTON BEACH, FLORIDA:

45 **SECTION 1. RECITALS.** The foregoing "WHEREAS" clauses are hereby ratified
46 and confirmed by the City Commission and incorporated herein by this reference.

47 **SECTION 2. AUTHORITY.** This Resolution is adopted pursuant to the provisions of
48 Ordinance No. 21-011, Sections 166.021 and 166.041, Florida Statutes, and other applicable
49 provisions of law.

50 **SECTION 3. PURPOSE.** This Resolution constitutes the Initial Assessment Resolution
51 as defined in the Ordinance 21-011 which initiates the process for developing the Canal
52 Maintenance Services Special Assessment Roll and directs the imposition of a Canal
53 Maintenance Services Special Assessment as described hereinafter, for the Fiscal Year beginning
54 October 1, 2021. Its purpose is to provide procedures and standards for the levy and collection
55 of a Canal Maintenance Services Special Assessment for all Assessed Properties that receive
56 Canal Maintenance Services under the general home rule powers of a municipality to impose
57 special assessments, and to authorize a procedure for the funding of Canal Maintenance Services
58 providing special benefits to Assessed Properties within the City.

59 **SECTION 4. DEFINITIONS.** All capitalized words and terms not otherwise
60 defined herein shall have the meanings set forth in Ordinance 21-011. Unless the context
61 indicates otherwise, words imparting the singular number, include the plural number, and vice
62 versa. As used in this Resolution, the following terms shall have the following meanings unless
63 the context hereof otherwise requires:

64 **“Assessed Property”** means all property along the Lake Shore Haven Canal and the
65 Lake Eden Four Canals that receive Canal Maintenance Services provided by the City, as
66 described in Appendix “A”.

67 **"Assessment Coordinator"** means the person designated by the City to administer the
68 City's Canal Maintenance Services, or such person's designee.

69 **"Cost Apportionment"** means the apportionment of the Canal Maintenance Services
70 Assessed Cost among all Assessed Properties that receive Canal Maintenance Services pursuant
71 to the apportionment methodology described in Section 8 of this Initial Assessment Resolution.

72 **"Estimated Canal Maintenance Services Special Assessment Rate Schedule"** means
73 that rate schedule attached hereto as Appendix "B" and hereby incorporated herein by reference,
74 specifying the Canal Maintenance Services Assessed Costs determined in Section 9 of this Initial
75 Assessment Resolution and the estimated Canal Maintenance Services Special Assessment Rates
76 established in Section 9 of this Initial Assessment Resolution.

77 **"Ordinance"** means the Canal Maintenance Special Assessment Ordinance, Ordinance
78 21-011, codified as Chapter 23, Article VI of the City's Code of Ordinances, as amended from
79 time to time.

80 **"Property"** means those Tax Parcels receive Canal Maintenance Services by the City.

81 **"Tax Parcel"** means a parcel of property located within the City to which the Property
82 Appraiser has assigned a distinct ad valorem property tax identification number.

83 **SECTION 5. PROVISION AND FUNDING OF CANAL MAINTENANCE**
84 **SERVICES.**

85 (A) Upon the imposition of the Canal Maintenance Services Special Assessment for
86 Canal Maintenance Services upon Assessed Property, the City shall provide Canal
87 Maintenance Services to such Assessed Property. Canal Maintenance Services means
88 services provided by the City, such as de-weeding and similar actions such as aquatic
89 weed eradication through safe herbicide spraying, but not dredging, to prevent the

90 canals from becoming clogged with vegetation, allow for vessel movement, eliminate
91 obstruction to the free-flow of storm water runoff, and reduce health and safety risks
92 associated with the proliferation of unwanted invasive aquatic vegetation. The cost
93 to provide such Canal Maintenance Services to Assessed Properties, as described
94 herein, shall be funded from the proceeds of the Canal Maintenance Services Special
95 Assessment.

96 (B) It is hereby ascertained, determined, and declared that each parcel of Assessed
97 Property will be benefited by the City's provision of Canal Maintenance Services in
98 an amount not less than the Canal Maintenance Services Special Assessment imposed
99 against such parcel, computed in the manner set forth in this Initial Assessment
100 Resolution. The legislative findings of special benefit in the Ordinance are
101 incorporated herein.

102 **SECTION 6. IMPOSITION AND COMPUTATION OF CANAL MAINTENANCE**
103 **SERVICES SPECIAL ASSESSMENTS.** Canal Maintenance Services Special Assessments
104 shall be imposed against all Assessed Properties that receive Canal Maintenance Services, as
105 provided herein. The Cost Apportionment described herein is approved and adopted as the
106 methodology to impose and compute the Canal Maintenance Services Special Assessment.

107 **SECTION 7. LEGISLATIVE DETERMINATIONS OF AUTHORITY, SPECIAL**
108 **BENEFIT AND FAIR APPORTIONMENT.** The City Commission incorporates and adopts the
109 legislative findings relating to special benefit within the Ordinance, and makes the following
110 legislative findings as to fair apportionment..

111 7.1 The Canal Maintenance Services Special Assessments to be imposed pursuant to
112 this Resolution shall constitute non-ad valorem assessments within the meaning and intent of the
113 Uniform Assessment Collection Act.

114 7.2 The lineal frontage of real property along a canal receiving Canal Maintenance
115 Services correlates with the benefit received by a Property, as the Canal Maintenance Services
116 eradicates weeds and other growths in the canal, with the more lineal feet of a Property meaning
117 more volume of eradicated weeds and other growths, more area for improved vessel movement,
118 and better storm water runoff from the Property. The potential demand for Canal Maintenance
119 Services is driven by the property being adjacent to a canal receiving Canal Maintenance
120 Services, and the length of its lineal frontage along the canal. Thus, it is fair and reasonable to
121 apportion the costs of Canal Maintenance Services on a per lineal foot basis, corresponding with
122 the canal receiving Canal Maintenance Services.

123 7.3 Apportioning the costs of Canal Maintenance Services attributable to Assessed
124 Properties on a per lineal foot basis is required to avoid cost inefficiency and unnecessary
125 administration, and is a fair and reasonable method.

126 7.4 In addition to the costs of the Canal Maintenance Services, there are administrative
127 costs associated with levying the assessment, such as costs of published notice, mailed notice, and
128 invoicing and collecting the Canal Maintenance Services Special Assessment. These costs do not
129 correlate to a per lineal basis, as the costs are the same per Property regardless of the per lineal
130 footage on such Property. As a result, the administrative costs are apportioned on a per Property
131 basis, with each Property subject to the special assessment being charged the same amount.

132 **SECTION 8. COST APPORTIONMENT METHODOLOGY.** The Canal
133 Maintenance Services Assessed Costs are being collected for Canal Maintenance Services for

134 two service areas in the City: (1) Lake Shore Haven Canal; and, (2) Lake Eden Four Canals,
135 both as described in Appendix "A". The portion of the Canal Maintenance Assessed Costs for
136 Canal Maintenance Services is calculated for each of the two service areas separately. The Canal
137 Maintenance Assessed Costs for each of the service areas includes the costs associated with the
138 Canal Maintenance Services for such service area. The portion of the Assessment Amount for
139 Canal Maintenance Services is then calculated by taking the portion of the Assessed Costs for
140 Canal Maintenance Services within that service area, and dividing it by the total lineal footage of
141 Assessed Properties along the canals within a service area receiving Canal Maintenance
142 Services, to yield a per lineal foot rate for the service area. The lineal footage of a Property in a
143 service area is then multiplied by the lineal foot rate applicable to that same service area, to result
144 in Assessed Costs for Canal Maintenance Services applicable to the Property. The total
145 Administrative Costs for the Canal Maintenance Services Special Assessment is calculated, then
146 divided by the number of Properties subject to the Canal Maintenance Services Special
147 Assessment, with each being charged the same amount for the administrative costs. The
148 Assessment Amount per Property is the sum of the per lineal charge for Canal Maintenance
149 Services for such Property calculated as described herein and the administrative costs allocated
150 on a per Property basis.

151 **SECTION 9. DETERMINATION OF CANAL MAINTENANCE COLLECTION**
152 **ASSESSED COSTS; ESTABLISHMENT OF ANNUAL CANAL MAINTENANCE**
153 **COLLECTION ASSESSMENT RATES.**

154 (A) The Canal Maintenance Collection Service Assessed Costs to be assessed and
155 apportioned among Assessed Properties pursuant to the Cost Apportionment for the Fiscal Year
156 commencing October 1, 2021, is the amount determined in the manner described in Section 8

157 above. The Estimated Canal Maintenance Services Special Assessment Rate Schedule is attached
158 hereto as Appendix B. The approval of the Estimated Canal Maintenance Services Special
159 Assessment Rate Schedule by the adoption of this Initial Assessment Resolution determines the
160 amount of the Canal Maintenance Services Assessed Costs.

161 (B) The estimated Canal Maintenance Services Special Assessments specified in the
162 Estimated Canal Maintenance Services Special Assessment Rate Schedule are hereby established to
163 fund the Canal Maintenance Services Assessed Costs determined to be assessed in the Fiscal Year
164 commencing October 1, 2021.

165 (C) The estimated Canal Maintenance Services Special Assessments established in this
166 Initial Assessment Resolution shall be the estimated assessment rates applied by the Assessment
167 Coordinator in the preparation of the updated Canal Maintenance Services Special Assessment Roll
168 for the Fiscal Year commencing October 1, 2021, as provided in Section 10 of this Initial
169 Assessment Resolution.

170 **SECTION 10. ANNUAL CANAL MAINTENANCE SERVICES SPECIAL**
171 **ASSESSMENT ROLL.**

172 (A) The Assessment Coordinator is hereby directed to prepare, or cause to be prepared, a
173 Canal Maintenance Services Special Assessment Roll for the Fiscal Year commencing October 1,
174 2021, in the manner provided in this Initial Assessment Resolution. The Assessment Coordinator
175 shall apportion the estimated Canal Maintenance Collection Service Assessed Cost to be recovered
176 through Canal Maintenance Services Special Assessments in the manner set forth in this Initial
177 Assessment Resolution. A copy of this Initial Assessment Resolution, the Ordinance, and the Canal
178 Maintenance Services Special Assessment Roll shall be maintained on file in the office of the City
179 Clerk and open to public inspection. The foregoing shall not be construed to require that the Canal

180 Maintenance Services Special Assessment Roll proposed for the Fiscal Year commencing October
181 1, 2021 be in printed form if the amount of the Canal Maintenance Services Special Assessment for
182 each parcel of property can be determined by the use of a computer terminal available to the public.

183 (B) It is hereby ascertained, determined, and declared that the method of determining the
184 Canal Maintenance Services Special Assessments for the City's Canal Maintenance Services as set
185 forth in this Initial Assessment Resolution is a fair and reasonable method of apportioning the Canal
186 Maintenance Services Assessed Cost among parcels of Assessed Property located within the City,
187 as the methodology and apportionment assures that no property is assessed an amount greater than
188 the benefit which it receives from the Canal Maintenance Services provided by the City through its
189 Contract.

190 **SECTION 11. AUTHORIZATION OF PUBLIC HEARING.** There is hereby
191 established a public hearing to be held at 5:30 p.m., on September 8, 2021, in City of Boynton
192 Beach Commission Chambers, 100 East Ocean Avenue, Boynton Beach, Florida, 33435, at
193 which time the City Commission will receive and consider any comments on the Canal
194 Maintenance Services Special Assessment from the public and affected property owners and
195 consider imposing the Canal Maintenance Services Special Assessment and collecting such
196 assessments on the same bill as ad valorem taxes.

197 **SECTION 12. NOTICE BY PUBLICATION.** The Assessment Coordinator shall
198 publish notice of the public hearing authorized by Section 11 hereof, in the manner and time
199 provided within the Ordinance. The notice shall be published no later than August 19, 2021, in
200 substantially the form attached hereto as Appendix C.

201 **SECTION 13. NOTICE BY MAIL.** The Assessment Coordinator shall also ensure timely
202 notice by mail, in the manner and time provided within the Ordinance. The notice shall be
203 mailed no later than August 19, 2021, in substantially the form attached hereto as Appendix D.

204 **SECTION 14. PROOF OF NOTICE.** The Assessment Coordinator may provide proof
205 of such notice by affidavit, if any is required pursuant to the Ordinance or Resolution.

206 **SECTION 15. COLLECTION.** Pursuant to the authority of Section 23-75 of
207 the Ordinance, the City Commission authorizes the collection of the Canal Maintenance Special
208 for the 2021-2022 Fiscal Year through mailed invoices sent to the owners of real property on
209 which the Canal Maintenance Special Assessment is levied.

210 **SECTION 16. APPLICATION OF ASSESSMENT PROCEEDS.** Proceeds derived
211 by the City from the Canal Maintenance Services Special Assessments will be utilized for the
212 provision of Canal Maintenance Services, facilities, and programs by the City, through its
213 Contract, as described herein.

214 **SECTION 17. CONFLICT.** All resolutions or parts of resolutions in conflict herewith
215 are hereby repealed to the extent of such conflict.

216 **SECTION 18. SEVERABILITY.** If any clause, section, other part or application of
217 this Resolution is held by any court of competent jurisdiction to be unconstitutional or invalid, in
218 part or application, it shall not affect the validity of the remaining portions or applications of this
219 Resolution.

220

221

222 **SECTION 19. EFFECTIVE DATE.** This Initial Assessment Resolution shall take
223 effect immediately upon its passage and adoption.

224 **PASSED AND ADOPTED** this 13th day of July, 2021.

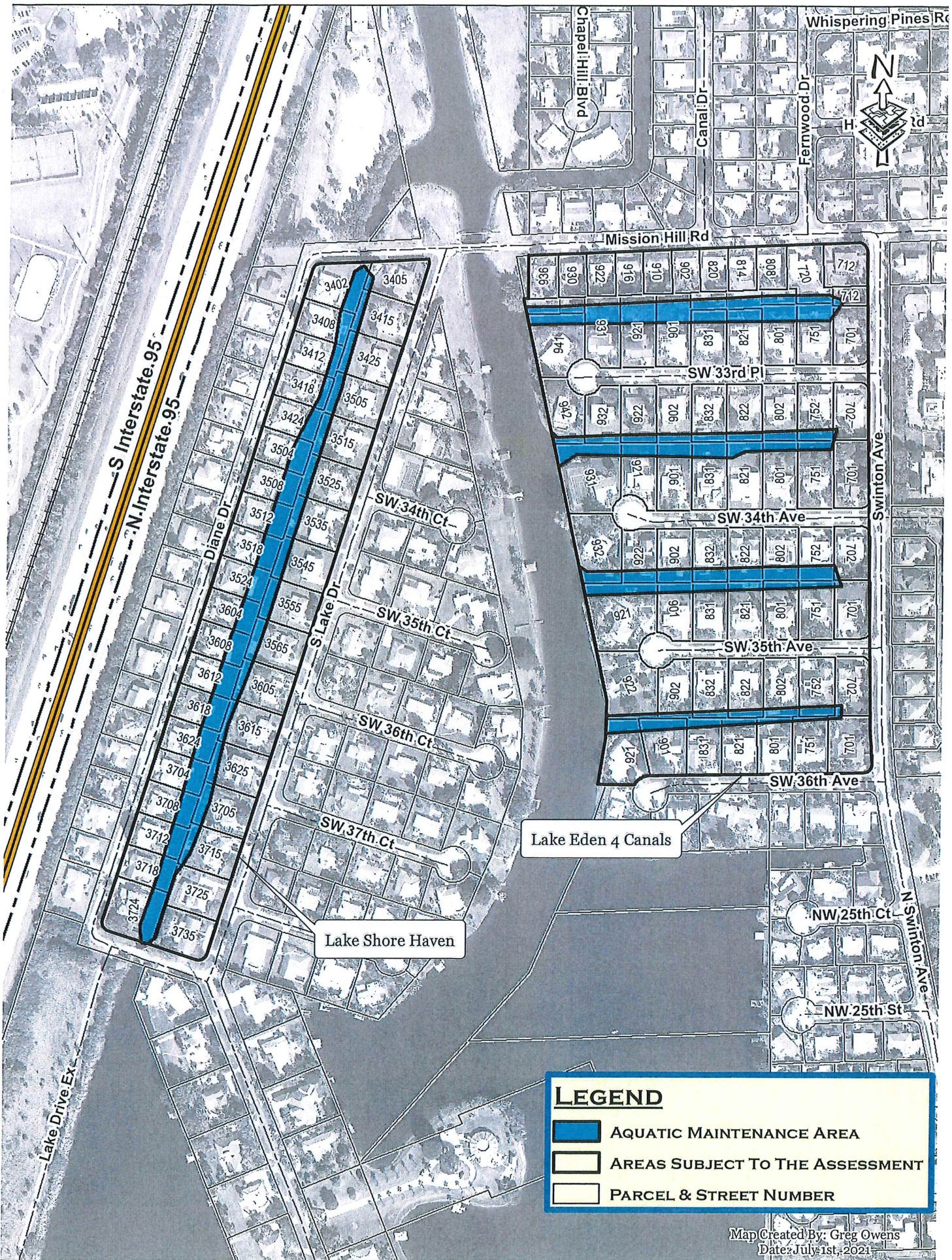
	CITY OF BOYNTON BEACH, FLORIDA	YES	NO
225			
226			
227			
228	Mayor – Steven B. Grant	_____	_____
229			
230	Vice Mayor – Woodrow L. Hay	_____	_____
231			
232	Commissioner – Justin Katz	_____	_____
233			
234	Commissioner – Christina L. Romelus	_____	_____
235			
236	Commissioner – Ty Penserga	_____	_____
237			
238			
239			
240			
241			
242			
243			
244			
245			
246			
247			
248			
249			

239 ATTEST:
240
241 _____
242 Crystal Gibson, MMC
243 City Clerk
244
245
246 (Corporate Seal)
247
248
249

APPENDIX A

ASSESSED PROPERTY

**LAKE SHORE HAVEN CANAL
LAKE EDEN FOUR CANALS**



Lake Eden 4 Canals

Lake Shore Haven

LEGEND

- AQUATIC MAINTENANCE AREA
- AREAS SUBJECT TO THE ASSESSMENT
- PARCEL & STREET NUMBER

Lake Shore Haven Canal

June 30, 2021

No.	PCN	Property Owner	Address
1	08434605070020010	Vismor Dan Charlaes & Jacqueline Ruth	3724 DIANE DR
2	08434605070020020	Digregorio John J Jr & Rosenberg Stephen G	3718 DIANE DR
3	08434605070020030	Bolt Charles M	3712 DIANE DR
4	08434605070020040	Sergio Mark	3708 DIANE DR
5	08434605070020050	Gomez Fernando & Judith	3704 DIANE DR
6	08434605070020060	Mackey Frederick H & Nancy S	3624 DIANE DR
7	08434605070020070	Hager Anita B & James H	3618 DIANE DR
8	08434605070020080	Smith Bryant & Hirsch Jorge & Hirsch Veronica	3612 DIANE DR
9	08434605070020090	Whetstone Harold O & Laurie L	3608 DIANE DR
10	08434605070020100	Foelster Michael S & Lopera Jessica	3604 DIANE DR
11	08434605070020110	Shortley Elizabeth F & William F III	3524 DIANE DR
12	08434605070020120	Hirsch Jorge E & Edit A	3518 DIANE DR
13	08434605070020130	Condry Helen	3512 DIANE DR
14	08434605070020140	Barbalaco Annunziata & Giuseppe &	3508 DIANE DR
15	08434605070020150	Fishman Gary L & Linda R, Fisherman Gary L, Fisherman Linda R TR, Gary L Fisherman ET AL Titl	3504 DIANE DR
16	08434605070020160	Seversen Shannen M	3424 DIANE DR
17	08434605070020170	Weiser Mcveigh Elissa R	3418 DIANE DR
18	08434605070020180	Herrero Carlos E & Sarah B	3412 DIANE DR
19	08434605070020190	Blais Stefanie	3408 DIANE DR
20	08434605070020200	Green Adam & Green Carole & Green Richard	3402 DIANE DR
21	08434605040030010	Lago Bridget & Christopher &	3405 S LAKE DR
22	08434605040030020	Sussman Bryan S & Tracy L	3415 S LAKE DR
23	08434605040030030	Cunningham Linda A & William A Jr &	3425 S LAKE DR
24	08434605040030040	De Fabrique Janick & Jean P	3505 S LAKE DR
25	08434605040030050	Ackerman Christopher & Cristina	3515 S LAKE DR
26	08434605040030060	Henry Kerry Nicola & Stephen Wayne	3525 S LAKE DR
27	08434605040030070	Dunnavan Charles C	3535 S LAKE DR
28	08434605040030080	Petronelli Danna T	3545 S LAKE DR
29	08434605040030090	James Ciara C & Kevin K &	3555 S LAKE DR
30	08434605040030100	Chinn Stacey R & Grant Michael L	3565 S LAKE DR
31	08434605040030110	Hendrickson Joyce	3605 S LAKE DR
32	08434605040030120	Beidleman Mark	3615 S LAKE DR
33	08434605040030130	Philosophos Jason A & Kandace K	3625 S LAKE DR
34	08434605040030140	Marlo Lesley	3705 S LAKE DR
35	08434605040030150	Main Baillie Greg & Maria C	3715 S LAKE DR
36	08434605040030160	White Joplin Myrna	3725 S LAKE DR
37	08434605040030170	Peterson Cammie D & Eric D	3735 S LAKE DR

Lake Eden Four Canals

Jun-30-21

No.	PCN	Property Owner	Address
Canal north of 33rd Place			
1	08434605010100010	Hutton Jerry R	936 Mission Hill RD
2	08434605010100020	Hogan Brian & Compton Angela M	930 Mission Hill RD
3	08434605010100030	Delray Investment Group LLC	922 Mission Hill RD
4	08434605010100040	Bluehman Joan	916 Mission Hill RD
5	08434605010100050	Hoofnagle Brian & Rodger	910 Mission Hill RD
6	08434605010100060	Hoofnagle Brian	902 Mission Hill RD
7	08434605010100070	Kinsloe Kevin T	820 Mission Hill RD
8	08434605010100080	Yonke Wayne C	814 Mission Hill RD
9	08434605010100090	Gallagher Lee A	808 Mission Hill RD
10	08434605010100100	Kaye Brett	720 Mission Hill RD
11	08434605010100110	Cameron Byron	712 Mission Hill RD
12	08434605060000012	Garolsky Jessica & Greenberg Yaad	701 SW 33RD PL
13	08434605060000022	Mileto Edward Jr & Aitchison Sarah G	751 SW 33RD PL
14	08434605060000032	Dunn Richard S & Dunn Irene H	801 SW 33RD PL
15	08434605060000041	Hendricks James P & Michelle M	821 SW 33RD PL
16	08434605060000051	Gerleman Axel & Gustaf	831 SW 33RD PL
17	08434605060000060	Cook David W & Renee	901 SW 33RD PL
18	08434605060000070	Wilsher William F & Kathy H	921 SW 33RD PL
19	08434605060000080	Borlie Ruth H	931 SW 33RD PL
20	08434605060000092	Sikorcin Ramona A, Ramona A Sikorcin Tr Titl Hldr	941 SW 33RD PL
Canal north of 34th Ave.			
21	08434605060000100	Cralle Raymond	942 SW 33RD PL
22	08434605060000110	Goldman Caitlin M	932 SW 33RD PL
23	08434605060000120	Bernstein Verne Est Trust & Bernstein Richard S Tr	922 SW 33RD PL
24	08434605060000130	Finn John F, Finn Kimberly M & Finn Michael A	902 SW 33RD PL
25	08434605060000140	Grasso Julie L Grasso Michael B & Grasso Julie L Tr Grasso Michael B Tr Michael B Grasso Et Al Tr Titl Hldrs	832 SW 33RD PL
26	08434605060000150	Walter Jerilyn & Dubartell Thomas	822 SW 33RD PL
27	08434605060000160	Yarbrough Dennis	802 SW 33RD PL
28	08434605060000170	Martin Cory & Erin	752 SW 33RD PL
29	08434605060000180	702SW33 Boynton LLC	702 SW 33RD PL
30	08434605060000190	Piercey Lynn A	701 SW 34TH AVE
31	08434605060000200	Holdren Carol A Carol A Holdren Tr Titl Hldr Holdren Carol A Tr	751 SW 34TH AVE
32	08434605060000210	Zloczover Virginia T	801 SW 34TH AVE
33	08434605060000220	Luckman Eric H & Joanne K	821 SW 34TH AVE
34	08434605060000230	Rezakhani Saleh	831 SW 34TH AVE
35	08434605060000240	Rynd Alan S	901 SW 34TH AVE
36	08434605060000250	Catronio Brock & Ashley S	921 SW 34TH AVE
37	08434605060000260	Aronson Michael J	931 SW 34TH AVE

Lake Eden Four Canals

Jun-30-21

No.	PCN	Property Owner	Address
Canal north of 33rd Place			
Canal north of 35th Ave.			
38	08434605060000270	Willens Mark A & Wendy R	932 SW 34TH AVE
39	08434605060000280	Steffes John & Marie	922 SW 34TH AVE
40	08434605060000290	Mickelsen Robert & Pauline	902 SW 34TH AVE
41	08434605060000300	Goldman Isaiah	832 SW 34TH AVE
42	08434605060000310	Arscott Carolyn Arscott Jeffrey & Arscott Carolyn Tr Arscott Jeffrey Tr Jeffrey Arscott Et Al Tr Titl Hldrs	822 SW 34TH AVE
43	08434605060000320	Kerl Douglas S & Kristen T	802 SW 34TH AVE
44	08434605060000330	Marshall Jayna & Robert	752 SW 34TH AVE
45	08434605060000340	Steiger Ted & Markee April	702 SW 34TH AVE
46	08434605060000350	Daly Brandon A	701 SW 35TH AVE
47	08434605060000360	Lowe Benno P li	751 SW 35TH AVE
48	08434605060000370	Bernet Price M	801 SW 35TH AVE
49	08434605060000380	Darsch Joseph F & Diane B	821 SW 35TH AVE
50	08434605060000390	Slade Kenneth A & Deborah A	831 SW 35TH AVE
51	08434605060000400	Kostantinidis Jessica H & Andrew A	901 SW 35TH AVE
52	08434605060000410	Flack Charles E & Allison Sue	921 SW 35TH AVE
Canal north of 36th Ave.			
53	08434605060000420	Dunton Bradley J & Lynne V	922 SW 35TH AVE
54	08434605060000430	Urquhart A Bruce & Sabine S	902 SW 35TH AVE
55	08434605060000440	Von Keil Patricia A	832 SW 35TH AVE
56	08434605060000450	Sachel Marilyn Marilyn Sachel Tr Titl Hldr Sachel Marilyn Tr	822 SW 35TH AVE
57	08434605060000460	Sadler William T Jr & Debinique T	802 SW 35TH AVE
58	08434605060000470	Broring Eduardo	752 SW 35TH AVE
59	08434605060000480	Korpeck Chad & Jaclyn	702 SW 35TH AVE
60	08434605060000490	Baraldi Luis F & Alina	701 SW 36TH AVE
61	08434605060000500	Pollich Gary & Maryann	751 SW 36TH AVE
62	08434605060000510	Cesarone Donald & Lauren	801 SW 36TH AVE
63	08434605060000520	Warren Joann Warren Mark G & Mark Warren Tr Titl Hldr Warren Mark G Tr	821 SW 36TH AVE
64	08434605060000530	Mckenna Patricia A Mckenna Patricia A Tr Patricia Mckenna Tr Titl Hldr	831 SW 36TH AVE
65	08434605060000540	Cook Ross L & Susan T	901 SW 36TH AVE
66	08434605060000550	Brand Jeffrey S & Jennifer L, Brand Jeffrey S Tr Brand Jennifer L Tr Jeffrey S Brand Et Al Tr Titl Hldrs	921 SW 36TH AVE

APPENDIX B

**ESTIMATED CANAL MAINTENANCE SERVICES
ASSESSMENT RATE SCHEDULE**

SECTION A-1 DETERMINATION OF CANAL MAINTENANCE SERVICES ASSESSED COSTS.

1. Lake Shore Haven Canal: The estimated Canal Maintenance Services Assessed Costs for the Lake Shore Haven Canal, including Canal Maintenance Services and administrative costs allocated to the Properties in the service area, to be assessed for the Fiscal Year commencing October 1, 2021, is **\$2,756.40.**
2. Lake Eden Four Canals: The estimated Canal Maintenance Services Assessed Costs for the Lake Eden Four Canals, including Canal Maintenance Services and administrative costs allocated to the Properties in the service area, to be assessed for the Fiscal Year commencing October 1, 2021, is **\$7939.60.**

SECTION A-2 ESTIMATED CANAL MAINTENANCE SERVICES ASSESSMENTS. The estimated Canal Maintenance Services Special Assessments to be assessed and apportioned among benefitted parcels pursuant to the Cost Apportionment Methodology to generate the estimated Canal Maintenance Services Assessed Cost for the Fiscal Year commencing October 1, 2021, are hereby established as follows for the purpose of this Initial Assessment Resolution:

1. Lake Shore Haven Canal: **\$0.50 per lineal foot, plus \$20.66 per Property**
2. Lake Eden Four Canals: **\$1.05 per lineal foot, plus \$20.66 per Property**



CITY OF BOYNTON BEACH – Utility Department
Private Canal - Aquatic Maintenance
Lake Shore Haven Canal

6-Jul-21

No.	PCN	Property Owner	Address	Linear Footage	Yearly Cost	Monthly Cost
1	08434605070020010	Vismor Dan Charlaes & Jacqueline Ruth	3724 DIANE DR	154.0	\$ 97.41	\$ 8.12
2	08434605070020020	Digregorio John J Jr & Rosenberg Stephen G	3718 DIANE DR	94.0	\$ 67.51	\$ 5.63
3	08434605070020030	Bolt Charles M	3712 DIANE DR	94.0	\$ 67.51	\$ 5.63
4	08434605070020040	Sergio Mark	3708 DIANE DR	94.0	\$ 67.51	\$ 5.63
5	08434605070020050	Gomez Fernando & Judith	3704 DIANE DR	94.0	\$ 67.51	\$ 5.63
6	08434605070020060	Mackey Frederick H & Nancy S	3624 DIANE DR	94.0	\$ 67.51	\$ 5.63
7	08434605070020070	Hager Anita B & James H	3618 DIANE DR	94.0	\$ 67.51	\$ 5.63
8	08434605070020080	Smith Bryant & Hirsch Jorge & Veronica	3612 DIANE DR	94.0	\$ 67.51	\$ 5.63
9	08434605070020090	Whetstone Harold O & Laurie L	3608 DIANE DR	94.0	\$ 67.51	\$ 5.63
10	08434605070020100	Foelster Michael S & Lopera Jessica	3604 DIANE DR	94.0	\$ 67.51	\$ 5.63
11	08434605070020110	Shortley Elizabeth F & William F III	3524 DIANE DR	94.0	\$ 67.51	\$ 5.63
12	08434605070020120	Hirsch Jorge E & Edit A	3518 DIANE DR	94.0	\$ 67.51	\$ 5.63
13	08434605070020130	Condry Helen	3512 DIANE DR	94.0	\$ 67.51	\$ 5.63
14	08434605070020140	Barbalaco Annunziata & Giuseppe & Fishman Gary L & Linda R, Fisherman Gary L, Fisherman Linda R TR, Gary L	3508 DIANE DR	94.0	\$ 67.51	\$ 5.63
15	08434605070020150	Fishman Gary L & Linda R, Fisherman Gary L, Fisherman Linda R TR, Gary L	3504 DIANE DR	94.0	\$ 67.51	\$ 5.63
16	08434605070020160	Seversen Shannen M	3424 DIANE DR	94.0	\$ 67.51	\$ 5.63
17	08434605070020170	Weiser Mcveigh Elissa R	3418 DIANE DR	94.0	\$ 67.51	\$ 5.63
18	08434605070020180	Herrero Carlos E & Sarah B	3412 DIANE DR	94.0	\$ 67.51	\$ 5.63
19	08434605070020190	Blais Stefanie	3408 DIANE DR	94.0	\$ 67.51	\$ 5.63
20	08434605070020200	Green Adam & Green Carole & Green Richard	3402 DIANE DR	152.5	\$ 96.66	\$ 8.06
21	08434605040030010	Lago Bridget & Christopher &	3405 S LAKE DR	78.4	\$ 59.73	\$ 4.98
22	08434605040030020	Sussman Bryan S & Tracy L	3415 S LAKE DR	120.0	\$ 80.46	\$ 6.71
23	08434605040030030	Cunningham Linda A & William A Jr &	3425 S LAKE DR	120.0	\$ 80.46	\$ 6.71
24	08434605040030040	De Fabrique Janick & Jean P	3505 S LAKE DR	120.0	\$ 80.46	\$ 6.71
25	08434605040030050	Ackerman Christopher & Cristina	3515 S LAKE DR	120.0	\$ 80.46	\$ 6.71
26	08434605040030060	Henry Kerry Nicola & Stephen Wayne	3525 S LAKE DR	120.0	\$ 80.46	\$ 6.71
27	08434605040030070	Dunnavan Charles C	3535 S LAKE DR	120.0	\$ 80.46	\$ 6.71
28	08434605040030080	Petronelli Danna T	3545 S LAKE DR	120.0	\$ 80.46	\$ 6.71
29	08434605040030090	James Ciara C & Kevin K &	3555 S LAKE DR	120.0	\$ 80.46	\$ 6.71
30	08434605040030100	Chinn Stacey R & Grant Michael L	3565 S LAKE DR	120.0	\$ 80.46	\$ 6.71
31	08434605040030110	Hendrickson Joyce	3605 S LAKE DR	120.0	\$ 80.46	\$ 6.71
32	08434605040030120	Beidleman Mark	3615 S LAKE DR	120.0	\$ 80.46	\$ 6.71
33	08434605040030130	Philosophos Jason A & Kandace K	3625 S LAKE DR	120.0	\$ 80.46	\$ 6.71
34	08434605040030140	Marlo Lesley	3705 S LAKE DR	120.0	\$ 80.46	\$ 6.71
35	08434605040030150	Main Baillie Greg & Maria C	3715 S LAKE DR	120.0	\$ 80.46	\$ 6.71
36	08434605040030160	White Joplin Myrna	3725 S LAKE DR	120.0	\$ 80.46	\$ 6.71
37	08434605040030170	Peterson Cammie D & Eric D	3735 S LAKE DR	120.0	\$ 80.46	\$ 6.71
	East side of canal		Total	3996.9	\$ 2,756.4	\$ 229.7

Price per linear foot of canal treated \$0.50

Administrative cost of \$20.66/year per each property



CITY OF BOYNTON BEACH – Utility Department
Private Canal - Aquatic Maintenance
Lake Eden Four Canals

6-Jul-21

No.	PCN	Property Owner	Address	Linear Footage	Yearly Cost	Monthly Cost
Canal north of 33rd Place						
1	08434605010100010	Hutton Jerry R	936 Mission Hill RD	84	\$ 109.14	\$ 9.10
2	08434605010100020	Hogan Brian & Compton Angela M	930 Mission Hill RD	80	\$ 104.93	\$ 8.77
3	08434605010100030	Delray Investment Group LLC	922 Mission Hill RD	80	\$ 104.93	\$ 8.77
4	08434605010100040	Bluehman Joan	916 Mission Hill RD	80	\$ 104.93	\$ 8.77
5	08434605010100050	Hoofnagle Brian & Rodger	910 Mission Hill RD	80	\$ 104.93	\$ 8.77
6	08434605010100060	Hoofnagle Brian	902 Mission Hill RD	80	\$ 104.93	\$ 8.77
7	08434605010100070	Kinsloe Kevin T	820 Mission Hill RD	80	\$ 104.93	\$ 8.77
8	08434605010100080	Yonke Wayne C	814 Mission Hill RD	80	\$ 104.93	\$ 8.77
9	08434605010100090	Gallagher Lee A	808 Mission Hill RD	85	\$ 110.19	\$ 9.18
10	08434605010100100	Kaye Brett	720 Mission Hill RD	105	\$ 131.26	\$ 10.94
11	08434605010100110	Cameron Byron	712 Mission Hill RD	75	\$ 99.66	\$ 8.31
12	08434605060000012	Garolsky Jessica & Greenberg Yaad	701 SW 33RD PL	18	\$ 39.62	\$ 3.30
13	08434605060000022	Mileto Edward Jr & Aitchison Sarah G	751 SW 33RD PL	100	\$ 125.99	\$ 10.50
14	08434605060000032	Dunn Richard S & Dunn Irene H	801 SW 33RD PL	100	\$ 125.99	\$ 10.50
15	08434605060000041	Hendricks James P & Hendricks Michelle M	821 SW 33RD PL	100	\$ 125.99	\$ 10.50
16	08434605060000051	Gerleman Axel & Gerleman Gustaf	831 SW 33RD PL	100	\$ 125.99	\$ 10.50
17	08434605060000060	Cook David W & Cook Renee	901 SW 33RD PL	100	\$ 125.99	\$ 10.50
18	08434605060000070	Wilsher William F & Wilsher Kathy H	921 SW 33RD PL	100	\$ 125.99	\$ 10.50
19	08434605060000080	Borlie Ruth H	931 SW 33RD PL	100	\$ 125.99	\$ 10.50
20	08434605060000092	Sikorcin Ramona A, Ramona A Sikorcin Tr Titl Hldr, Sikorcin Ramona A Tr	941 SW 33RD PL	161	\$ 190.25	\$ 15.88
Canal north of 34th Ave.						
21	08434605060000100	Cralle Raymond	942 SW 33RD PL	83	\$ 108.09	\$ 9.01
22	08434605060000110	Goldman Caitlin M	932 SW 33RD PL	105	\$ 131.26	\$ 10.94
23	08434605060000120	Bernstein Verne Est Trust & Bernstein Richard S Tr	922 SW 33RD PL	100	\$ 125.99	\$ 10.50
24	08434605060000130	Finn John F, Finn Kimberly M & Finn Michael A	902 SW 33RD PL	100	\$ 125.99	\$ 10.50
25	08434605060000140	Grasso Julie L Grasso Michael B & Grasso Julie L Tr Grasso Michael B Tr Michael B Grasso Et Al Tr Titl Hldrs	832 SW 33RD PL	100	\$ 125.99	\$ 10.50
26	08434605060000150	Walter Jerilyn & Dubartell Thomas	822 SW 33RD PL	100	\$ 125.99	\$ 10.50
27	08434605060000160	Yarbrough Dennis	802 SW 33RD PL	100	\$ 125.99	\$ 10.50
28	08434605060000170	Martin Cory & Martin Erin	752 SW 33RD PL	100	\$ 125.99	\$ 10.50
29	08434605060000180	702SW33 Boynton LLC.	702 SW 33RD PL	25	\$ 46.99	\$ 3.92
30	08434605060000190	Piercey Lynn A	701 SW 34TH AVE	25	\$ 46.99	\$ 3.92
31	08434605060000200	Holdren Carol A Carol A Holdren Tr Titl Hldr Holdren Carol A Tr	751 SW 34TH AVE	100	\$ 125.99	\$ 10.50
32	08434605060000210	Zloczover Virginia T	801 SW 34TH AVE	100	\$ 125.99	\$ 10.50

33	08434605060000220	Luckman Eric H & Luckman Joanne K	821 SW 34TH AVE	100	\$ 125.99	\$ 10.50	
34	08434605060000230	Rezakhani Saleh	831 SW 34TH AVE	100	\$ 125.99	\$ 10.50	
35	08434605060000240	Rynd Alan S	901 SW 34TH AVE	100	\$ 125.99	\$ 10.50	
36	08434605060000250	Catronio Brock & Catronio Ashley S	921 SW 34TH AVE	100	\$ 125.99	\$ 10.50	
37	08434605060000260	Aronson Michael J	931 SW 34TH AVE	188	\$ 218.69	\$ 18.22	
Canal north of 35th Ave.							
38	08434605060000270	Willens Mark A & Willens Wendy R	932 SW 34TH AVE	109	\$ 135.47	\$ 11.29	
39	08434605060000280	Steffes John & Steffes Marie	922 SW 34TH AVE	100	\$ 125.99	\$ 10.50	
40	08434605060000290	Mickelsen Robert & Mickelsen Pauline	902 SW 34TH AVE	100	\$ 125.99	\$ 10.50	
41	08434605060000300	Goldman Isaiah	832 SW 34TH AVE	100	\$ 125.99	\$ 10.50	
42	08434605060000310	Arscott Carolyn Arscott Jeffrey & Arscott Carolyn Tr Arscott Jeffrey Tr Jeffrey Arscott Et Al Tr Titl Hldrs	822 SW 34TH AVE	100	\$ 125.99	\$ 10.50	
43	08434605060000320	Kerl Douglas S & Kerl Kristen T	802 SW 34TH AVE	100	\$ 125.99	\$ 10.50	
44	08434605060000330	Marshall Jayna & Marshall Robert	752 SW 34TH AVE	100	\$ 125.99	\$ 10.50	
45	08434605060000340	Steiger Ted & Markee April	702 SW 34TH AVE	20	\$ 41.73	\$ 3.48	
46	08434605060000350	Daly Brandon A	701 SW 35TH AVE	20	\$ 41.73	\$ 3.48	
47	08434605060000360	Lowe Benno P Ii	751 SW 35TH AVE	100	\$ 125.99	\$ 10.50	
48	08434605060000370	Bernet Price M	801 SW 35TH AVE	100	\$ 125.99	\$ 10.50	
49	08434605060000380	Darsch Joseph F & Darsch Diane B	821 SW 35TH AVE	100	\$ 125.99	\$ 10.50	
50	08434605060000390	Slade Kenneth A & Slade Deborah A	831 SW 35TH AVE	100	\$ 125.99	\$ 10.50	
51	08434605060000400	Kostantinidis Jessica H & Kostantinidis Andrew A	901 SW 35TH AVE	100	\$ 125.99	\$ 10.50	
52	08434605060000410	Flack Charles E & Flack Allison Sue	921 SW 35TH AVE	209	\$ 240.81	\$ 20.07	
Canal north of 36th Ave.							
53	08434605060000420	Dunton Bradley J & Dunton Lynne V	922 SW 35TH AVE	145	\$ 173.39	\$ 14.47	
54	08434605060000430	Urquhart A Bruce & Urquhart Sabine S	902 SW 35TH AVE	100	\$ 125.99	\$ 10.50	
55	08434605060000440	Von Keil Patricia A	832 SW 35TH AVE	100	\$ 125.99	\$ 10.50	
56	08434605060000450	Sachel Marilyn Marilyn Sachel Tr Titl Hldr Sachel Marilyn Tr	822 SW 35TH AVE	100	\$ 125.99	\$ 10.50	
57	08434605060000460	Sadler William T Jr & Sadler Debinique T	802 SW 35TH AVE	100	\$ 125.99	\$ 10.50	
58	08434605060000470	Broring Eduardo	752 SW 35TH AVE	100	\$ 125.99	\$ 10.50	
59	08434605060000480	Korpeck Chad & Korpeck Jaclyn	702 SW 35TH AVE	30	\$ 52.26	\$ 4.36	
60	08434605060000490	Baraldi Luis F & Baraldi Alina	701 SW 36TH AVE	70	\$ 94.39	\$ 7.87	
61	08434605060000500	Pollich Gary & Pollich Maryann	751 SW 36TH AVE	100	\$ 125.99	\$ 10.50	
62	08434605060000510	Cesarone Donald & Cesarone Lauren	801 SW 36TH AVE	100	\$ 125.99	\$ 10.50	
63	08434605060000520	Warren Joann Warren Mark G & Mark Warren Tr Titl Hldr Warren Mark G Tr	821 SW 36TH AVE	100	\$ 125.99	\$ 10.50	
64	08434605060000530	Mckenna Patricia A Mckenna Patricia A Tr Patricia Mckenna Tr Titl Hldr	831 SW 36TH AVE	100	\$ 125.99	\$ 10.50	
65	08434605060000540	Cook Ross L & Cook Susan T	901 SW 36TH AVE	137	\$ 164.97	\$ 13.75	
66	08434605060000550	Brand Jeffrey S & Brand Jennifer L Brand Jeffrey S Tr Brand Jennifer L Tr Jeffrey S Brand Et Al Tr Titl Hldrs	921 SW 36TH AVE	89	\$ 114.41	\$ 9.53	
South side of canal				Total	6243	\$ 7,939.6	\$ 661.9

Price per linear foot of canal treated \$1.05

Administrative cost of \$20.66/yearly per each property

APPENDIX C

FORM OF NOTICE TO BE PUBLISHED

To be published no later than August 19, 2021

INSERT MAP OF LAKE SHORE HAVEN AND LAKE EDEN FOUR CANALS AREA

**NOTICE OF HEARING TO IMPOSE AND
PROVIDE FOR COLLECTION OF CANAL MAINTENANCE SERVICES SPECIAL ASSESSMENTS**

Notice is hereby given that the City Commission of the City of Boynton Beach will conduct a public hearing to consider imposing Canal Maintenance Services Special Assessments upon properties that receive Canal Maintenance Services along the Lake Shore Haven Canal and the Lake Eden Four Canals, for the provision by the City of Canal Maintenance Services to such properties within the City of Boynton Beach.

The hearing will be held at 5:30 p.m., on September 8, 2021, in City of Boynton Beach Commission Chambers, 100 East Ocean Avenue, City of Boynton Beach, Florida, 33435 for the purpose of receiving public comment on the proposed assessments. All affected property owners have a right to appear at the hearing and to file written objections with the City Commission within 20 days of this notice. If a person decides to appeal any decision made by the City Commission with respect to any matter considered at the hearing, such person will need a record of the proceedings and may need to ensure that a verbatim record is made, including the testimony and evidence upon which the appeal is to be made. In accordance with the Americans with Disabilities Act, persons needing a special accommodation or an interpreter to participate in this proceeding should contact the Clerk of the City at (561) 530-5880, at least seven days prior to the date of the hearing. The assessment for each parcel that receives Canal Maintenance Services from the City will be based upon the total lineal foot along a canal receiving Canal Maintenance Services from the City, plus administrative costs associated with the assessment on a per Property basis.

The annual assessment for the Lake Shore Haven Canal is \$0.50 per lineal foot for canal maintenance costs, plus \$20.66 per Property for administrative costs. The annual assessment for the Lake Eden Four Canals is \$1.05 per lineal foot, plus \$20.66 per Property for administrative costs.

Copies of the Assessment Ordinance, the Initial Assessment Resolution and the Canal Maintenance Services Special Assessment Roll are available for inspection at the City Clerk's Office, Boynton Beach City Hall, 100 East Ocean Avenue, Boynton Beach, Florida, 33435.

The assessments will be collected by the City. Failure to pay the assessments may cause a lien to be recorded against the property, which may result in a loss of title.

If you have any questions, please contact the Utility Department at (561) 742-6400, Monday through Friday between 8:00 a.m. and 5:00 p.m.

CITY CLERK

CITY OF BOYNTON BEACH.

APPENDIX D
FORM OF MAILED NOTICE

USE SEPARATE FORM FOR EACH SERVICE AREA
LAKE SHORE HAVEN CANAL
LAKE EDEN FOUR CANALS

[INSERT DATE], 2021

[Name]

[Address]

Boynton Beach, Florida 33470

RE: Tax Parcel #

CITY OF BOYNTON BEACH, FLORIDA
NOTICE OF HEARING TO IMPOSE AND PROVIDE
FOR CANAL MAINTENANCE SERVICES - NON-AD VALOREM ASSESSMENTS

Dear Property Owner:

As required by Section 197.3632, Florida Statutes, and City of Boynton Beach Ordinance No. 21-011, notice is given by the City of Boynton Beach that a special assessment for Canal Maintenance Services using the tax bill collection method may be levied by the City of Boynton Beach on your property for the fiscal year October 1, 2021 - September 30, 2022.

The purpose of this assessment is to collect the Canal Maintenance Services Special Assessment benefiting property receiving Canal Maintenance Services along the Lake Shore Haven Canal and the Lake Eden Four Canals, located within the City of Boynton Beach. Your Property is within the [Lake Shore Haven Canal/Lake Eden Four Canals] area. The total Canal Maintenance Services Special Assessment revenue to be collected within [Lake Shore Haven Canal/Lake Eden Four Canals] of the City of Boynton Beach is \$_____. The portion of the Special Assessment for Canal Maintenance Services is based on the lineal footage of your property along a canal that receives Canal Maintenance Services. The special assessment within the [Lake Shore Haven Canal/Lake Eden Four Canals] area for Canal Maintenance Services is \$___ per lineal foot. Your property has ___ lineal feet. In addition, each property is charged a flat amount for administrative costs associated with the special assessment. The administrative charges equal \$20.66 per Property.

The total special assessment for your property is \$_____ [add per lineal for the Property + administrative cost for the Property].

A public hearing will be held at 5:30 p.m. on September 8, 2021, in City of Boynton Beach Commission Chambers, 100 East Ocean Avenue, Boynton Beach, Florida 33435, for the purpose of receiving public comment on the proposed assessment. You and all other affected property owners

have a right to appear at the hearing and to file written objections with the City Commission within 20 days of this notice. If you decide to appeal any decision made by the City Commission with respect to any matter considered at the hearing, you will need a record of the proceedings and may need to ensure that a verbatim record is made, including the testimony and evidence upon which the appeal is to be made. In accordance with the Americans with Disabilities Act, persons needing a special accommodation or an interpreter to participate in this proceeding should contact the City Clerk's Office at (561) 742-6060, at least three days prior to the date of the hearing.

Unless proper steps are initiated in a court of competent jurisdiction to secure relief within 20 days from the date of City Commission action at the above hearing (including the method of apportionment, the rate of assessment and the imposition of assessments), such action shall be the final adjudication of the issues presented.

Copies of the Canal Maintenance Services Special Assessment Ordinance, the Initial Assessment Resolution, and the assessment roll are available for inspection at Boynton Beach City Hall - City Clerk's Office, 100 East Ocean Avenue, Boynton Beach, Florida 33435.

The Canal Maintenance Services non-ad valorem assessment amount shown on this notice for the above parcel will be collected by the City through an invoice sent to the property owners. Failure to pay the special assessment may result in a lien against your property, which may result in loss of title.

If you have any questions regarding your Canal Maintenance Services Special Assessment, please contact the Utility Department at (561) 742-6400, Monday through Friday between 8:00 a.m. and 5:00 p.m.

*** * * * * THIS IS NOT A BILL * * * * ***